



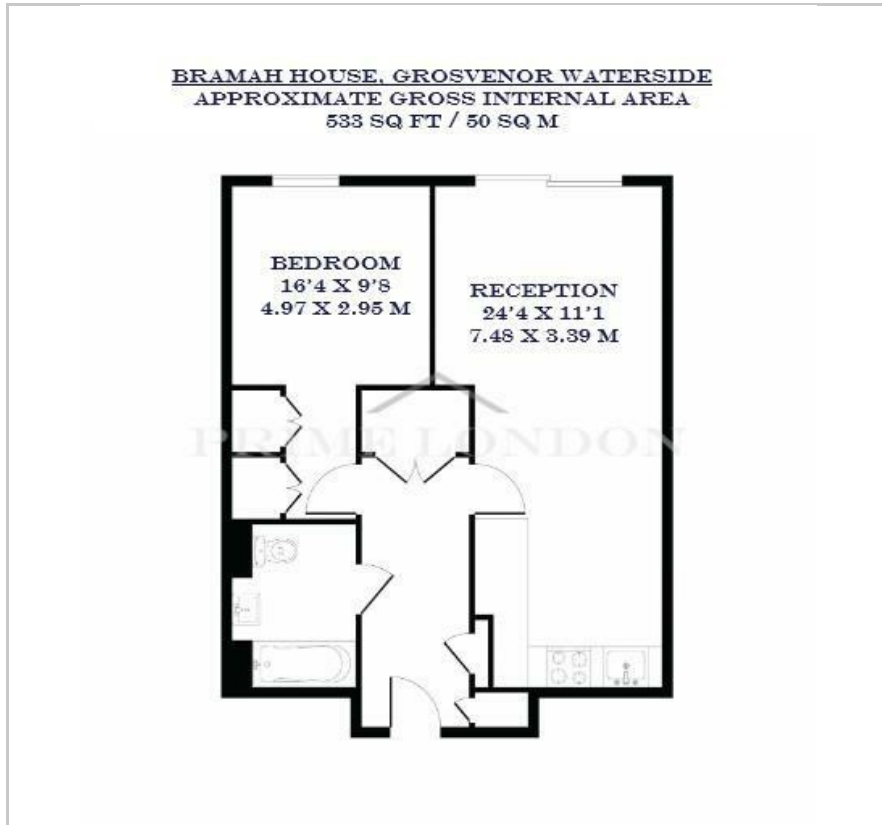
## Bramah House

Grosvenor Waterside, 9 Gatliff Road, SW1W 8DQ

£615 Per Week



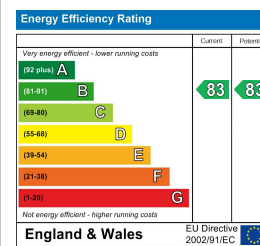
## Floor Plan



## Area Map



## Energy Efficiency Graph



## Viewing

By appointment. Contact us on 0207 052 1075 if you wish to arrange a viewing appointment for this property, or require further information.

- One bedroom apartment in the sought after Grosvenor Waterside
- Sizeable bedroom with built in wardrobes
- Close proximity to Sloane Square and Victoria underground stations
- 550 sq ft (50 sqm)
- Residents' gym and spa
- 24 hour concierge

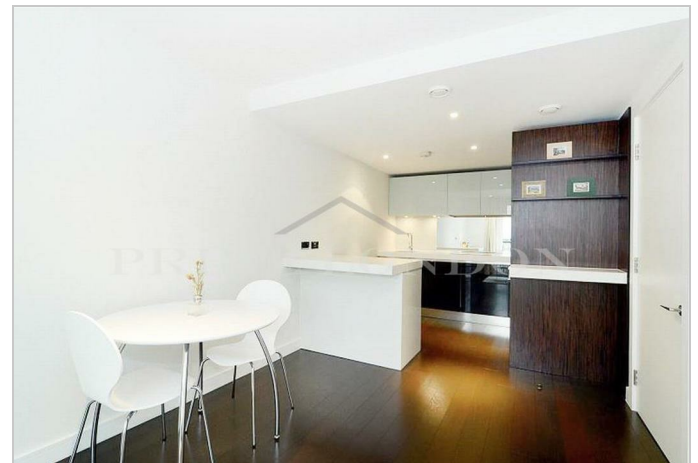
This one-bedroom apartment in Grosvenor Waterside, totalling of 550 sq ft (50 sqm), is available for rent through Prime London.

The apartment includes an open plan reception area, a good sized bedroom with built in wardrobes, and a bathroom.

Other benefits include a residents' gym, spa, and 24-hour concierge services. It is a perfect environment for modern living in one of London's most prestigious and dynamically changing areas.

Situated on the north side of the river by Chelsea Bridge, the open spaces of Battersea Park are also close by. The Victoria mainline and underground station (Victoria, Circle and District lines, zone 1) is also within close proximity.

Grosvenor Waterside is located just half a mile away from Sloane Square underground station and within easy walking distance of fashionable Kings Road.



These particulars, whilst believed to be accurate are set out as a general outline only for guidance and do not constitute any part of an offer or contract. Intending purchasers should not rely on them as statements of representation of fact, but must satisfy themselves by inspection or otherwise as to their accuracy. No person in this firm's employment has the authority to make or give any representation or warranty in respect of the property.