

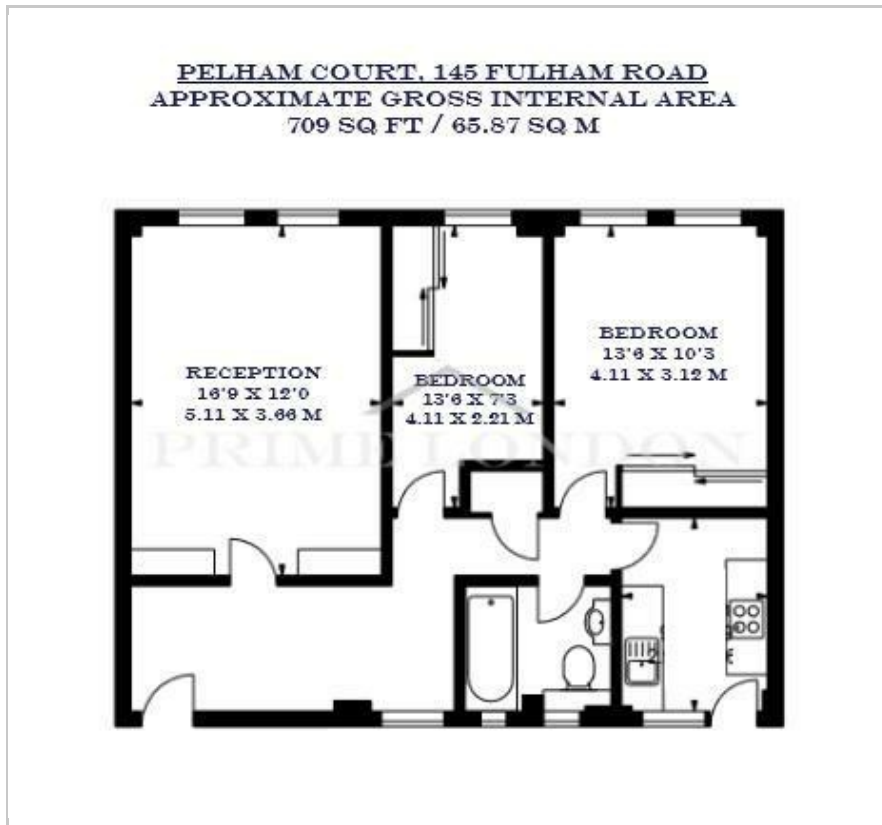


Pelham Court

145 Fulham Road, Fulham, SW3 6SH

£890 Per Week

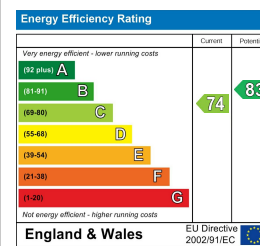
## Floor Plan



## Area Map



## Energy Efficiency Graph



## Viewing

By appointment. Contact us on 0207 052 1075 if you wish to arrange a viewing appointment for this property, or require further information.

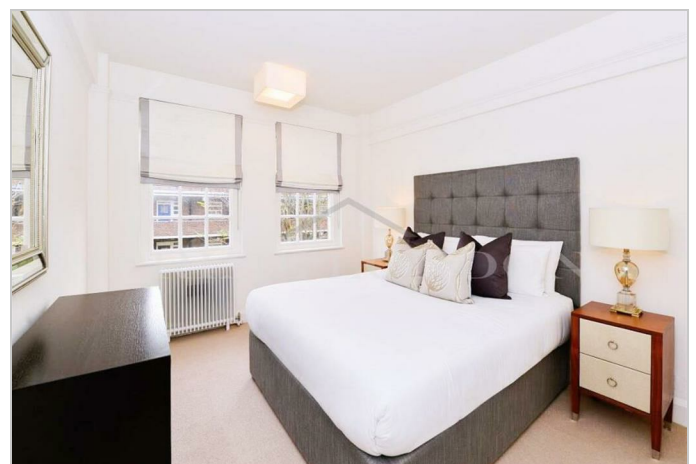
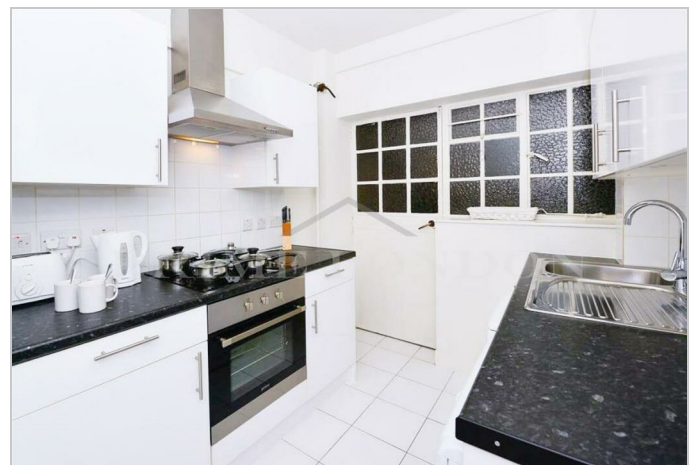
- Centrally located two bedroom apartment
- Separate well-equipped kitchen
- Close proximity to Sloane Square and South Kensington underground stations
- 709 sq ft (65.87 sqm)
- Resident's communal gardens
- Building manager and 24 hour emergency helpline

This two bedroom apartment, situated in Pelham Court, in the sought after residential area of Chelsea, is available for lease through Prime London.

Totalling 709 sq ft (65.87 sqm), this property comprises a spacious reception area, separate fully fitted kitchen, two bedrooms and one bathroom.

Residents of Pelham Court benefit from a lovely communal garden, a dedicated building porter and a 24 hour emergency helpline.

Centrally located in Chelsea, Pelham Court is in close proximity to the shops and amenities of Fulham Road. For transport, South Kensington and Sloane Square underground stations are a short walk away.



These particulars, whilst believed to be accurate are set out as a general outline only for guidance and do not constitute any part of an offer or contract. Intending purchasers should not rely on them as statements of representation of fact, but must satisfy themselves by inspection or otherwise as to their accuracy. No person in this firm's employment has the authority to make or give any representation or warranty in respect of the property.