



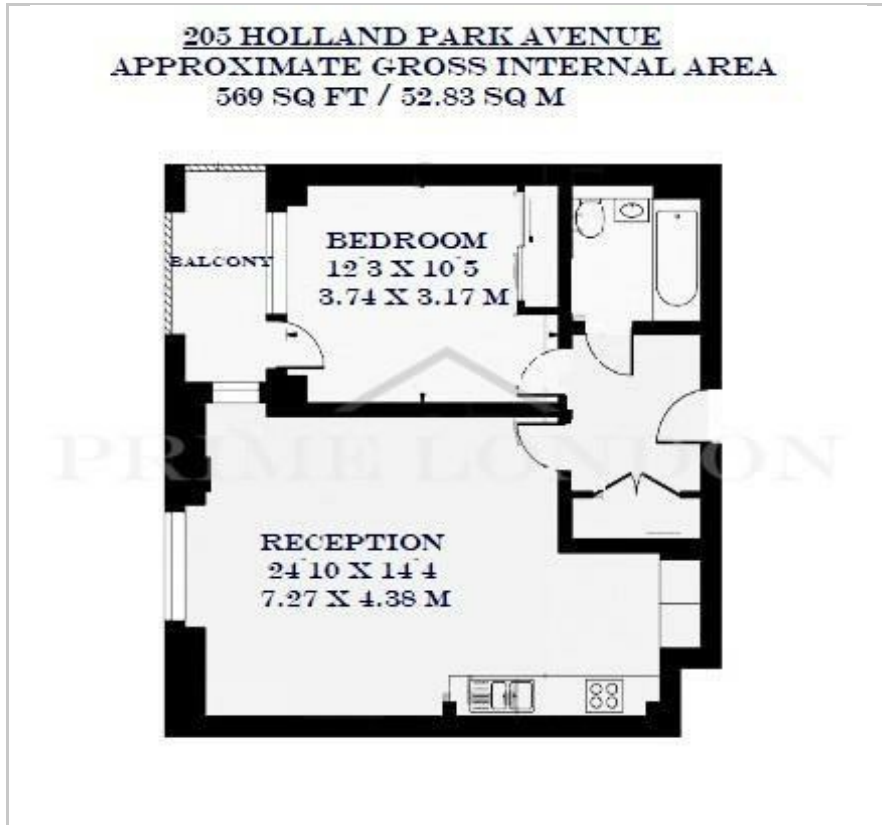
205 Holland Park Avenue

Holland Park, W11 4XB

£800,000

-  1
-  1
-  1
-  B

## Floor Plan



## Area Map



## Energy Efficiency Graph



## Viewing

By appointment. Contact us on 0207 052 1075 if you wish to arrange a viewing appointment for this property, or require further information.

- Bright and spacious one bedroom apartment
- Private winter garden
- Close to Shepherd's Bush Market and Westfield London
- 548 sq ft (50.9 sqm)
- Floor to ceiling windows, underfloor heating and wood flooring
- Gated cycle storage

A bright and spacious one-bedroom apartment at 205 Holland Park Avenue, an excellently situated purpose-built portered building, is available for chain free sale through Prime London.

Totalling 548 sq ft (50.9 sqm), the property features an open-plan contemporary kitchen, leading to a bright reception with access to a private balcony. The large bedroom comes complete with built-in wardrobes and offers additional balcony access.

Residents of 205 Holland Park Avenue enjoy exclusive amenities such as gated entry with CCTV, gated cycle storage and a landscaped courtyard.

The location is within a short distance from two Underground stations serviced by the Central line (Shepherd's Bush and Holland Park), with the added convenience of the Overground line at Shepherd's Bush.



These particulars, whilst believed to be accurate are set out as a general outline only for guidance and do not constitute any part of an offer or contract. Intending purchasers should not rely on them as statements of representation of fact, but must satisfy themselves by inspection or otherwise as to their accuracy. No person in this firm's employment has the authority to make or give any representation or warranty in respect of the property.