



## Garden House

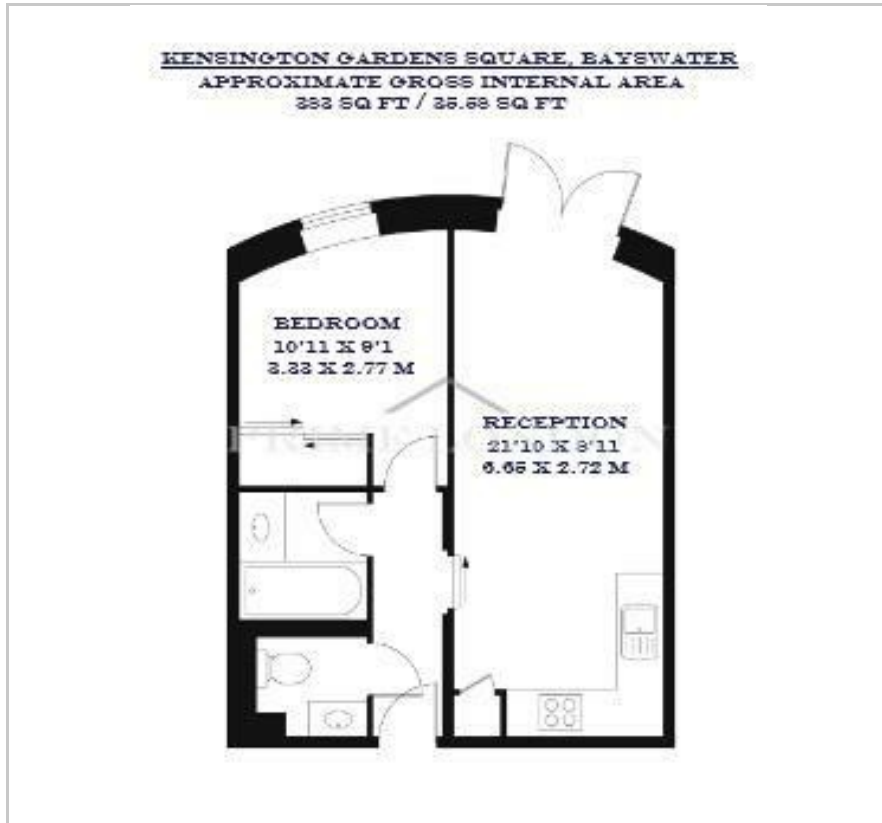
86-92 Kensington Gardens Square, W2 4BB

£725 Per Week





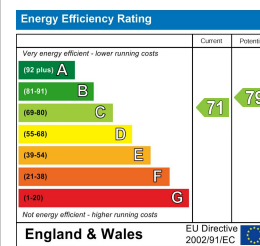
## Floor Plan



## Area Map



## Energy Efficiency Graph



## Viewing

By appointment. Contact us on 0207 052 1075 if you wish to arrange a viewing appointment for this property, or require further information.

- One bedroom, two bathroom ▪ 383 sq ft (35.58 sqm) apartment
- Featuring a stunning private terrace ▪ Access to charming communal gardens
- Short walk to Westbourne Grove and Notting Hill ▪ 24 hour security and emergency maintenance assistance



A recently renovated one bedroom apartment, situated on Kensington Gardens Square and is available for lease through Prime London.

Totalling 383 sq ft (35.58 sqm), this property features an open plan reception area with a fully fitted kitchen, leading to a generously sized private terrace, one bedroom, one bathroom and one guest W/C.

Highlights of this residence include built-in storage in the bedroom, a luxurious polished marble bathroom, custom made furniture in the reception room, a fully equipped bespoke Miele kitchen, and access to the charming communal gardens, a rare gem among London's garden squares.

The building offers 24-hour security, lift service, and emergency out-of-hours maintenance assistance.

Garden House is situated in a serene residential area of W2, within proximity to the amenities of Westbourne Grove, Notting Hill, and the picturesque Hyde Park, which includes the Whitley shopping mall.

It provides easy access to transportation hubs, with Bayswater and Queensway tube stations just a 5-minute walk away.



These particulars, whilst believed to be accurate are set out as a general outline only for guidance and do not constitute any part of an offer or contract. Intending purchasers should not rely on them as statements of representation of fact, but must satisfy themselves by inspection or otherwise as to their accuracy. No person in this firm's employment has the authority to make or give any representation or warranty in respect of the property.