

## The Courthouse

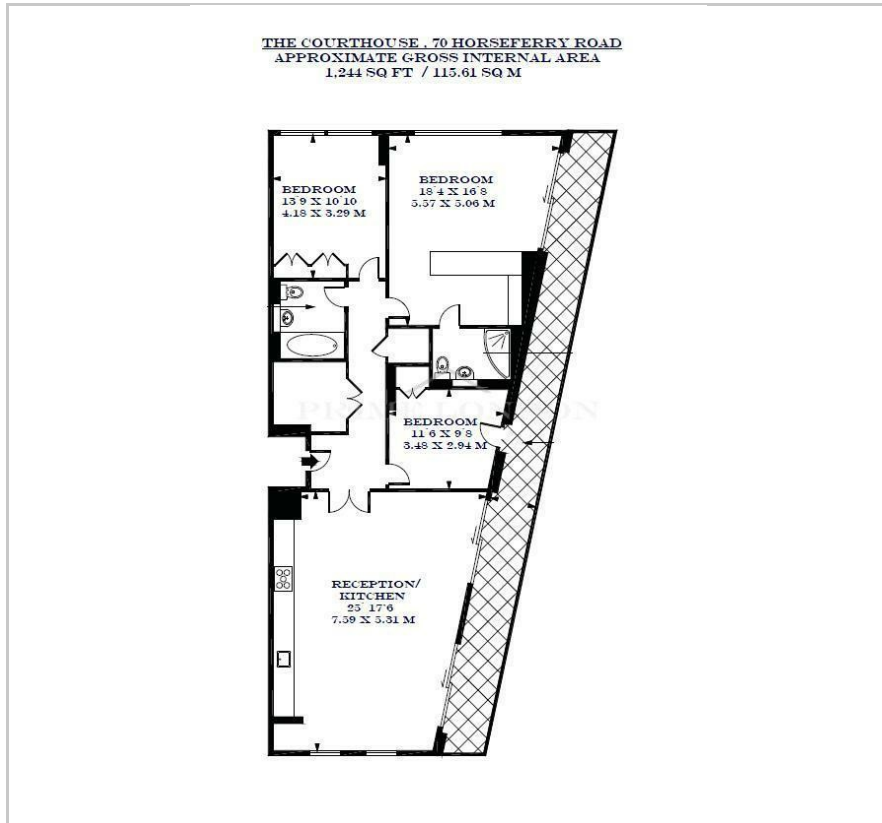
Westminster, SW1P 2AY

£1,325 Per Week





## Floor Plan



## Area Map



## Energy Efficiency Graph



## Viewing

By appointment. Contact us on 0207 052 1075 if you wish to arrange a viewing appointment for this property, or require further information.

- Three bedroom two bathroom ■ Secure parking space apartment
- 1,244 sq ft (115.61 sqm) ■ Residents' fitness centre
- Fully Furnished ■ 24 hour concierge service
- Large Private Terrace With Views ■ 2 Luxury Bathrooms (En-Suite To Master)

This luxurious three bedroom two bathroom apartment of 1,244 sq ft (115.61 sqm), with secure parking space, is available fully furnished in this prestigious and excellently located development, The Courthouse, through Prime London.

The property features a sizeable dual aspect reception with access to a private balcony and open plan kitchen, three double bedrooms with ample built in storage, and two excellent bathrooms one of which is en suite.

Apartments feature fully integrated appliances, high specification 'walk in' shower suite, underfloor heating, comfort cooling and recessed lighting.

This exciting new addition to Westminster features a concierge service, landscaped gardens and a residents' fitness centre, making this the ideal home or London base.



These particulars, whilst believed to be accurate are set out as a general outline only for guidance and do not constitute any part of an offer or contract. Intending purchasers should not rely on them as statements of representation of fact, but must satisfy themselves by inspection or otherwise as to their accuracy. No person in this firm's employment has the authority to make or give any representation or warranty in respect of the property.