



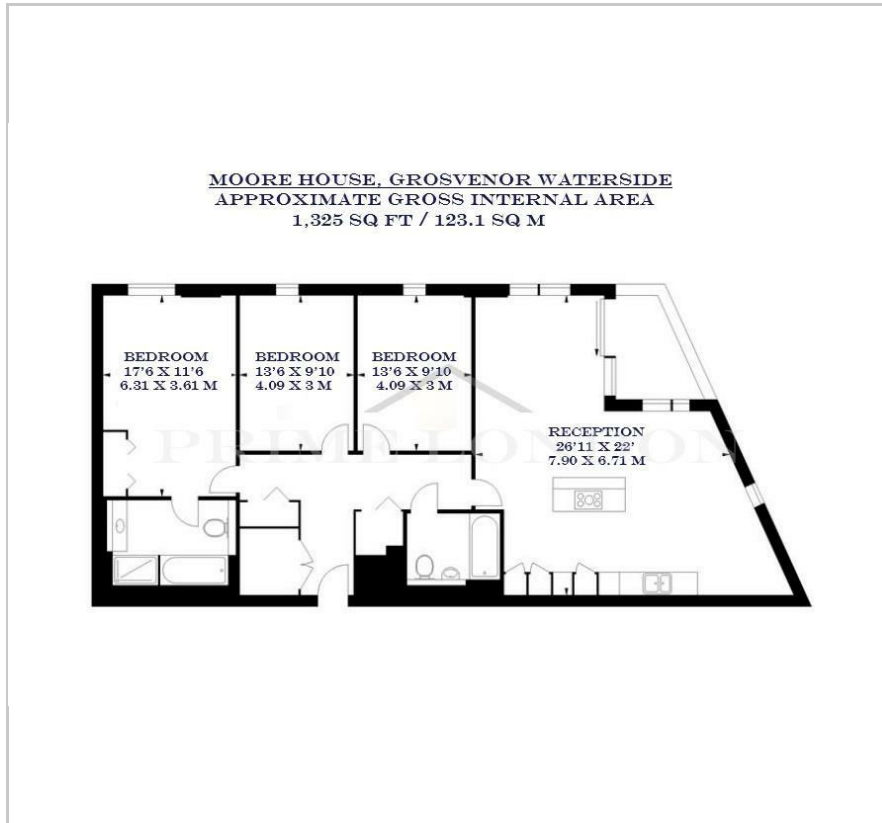
Moore House

Grosvenor Waterside, 2 Gatliff Road, SW1W 8DU

£1,385 Per Week



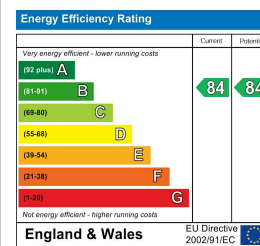
Floor Plan



Area Map



Energy Efficiency Graph



Viewing

By appointment. Contact us on 0207 052 1075 if you wish to arrange a viewing appointment for this property, or require further information.

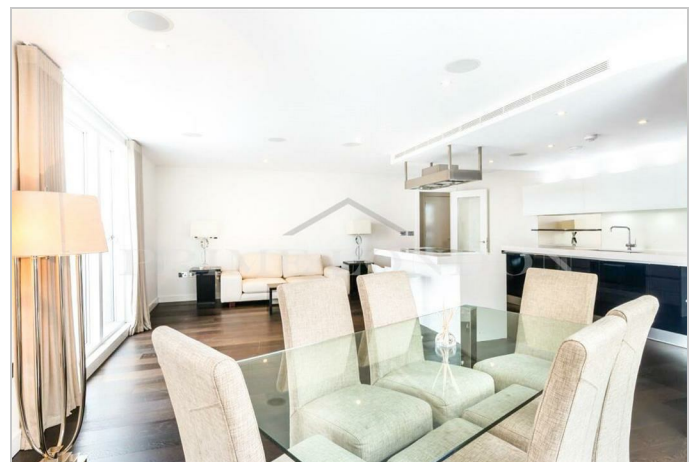
- Spacious three-bedroom apartment
- 1,325 sq ft (123.1 sq m)
- Principal bedroom with an en-suite bathroom
- Facilities include a gym and spa
- 24 hours concierge
- Furnished

A generously sized three-bedroom apartment located in Moore House, within the sought after development Grosvenor Waterside in Chelsea, is available for lease through Prime London.

Totalling of 1,325 sq ft (123.1 sqm), this property offers a modern open-plan kitchen, a principal bedroom featuring ample storage and an en-suite bathroom, and two more double bedrooms.

Residents of this sought-after development enjoy access to a range of on-site facilities, including a 24-hour concierge service and a luxury spa gym.

Conveniently situated on the north side of the river by Chelsea Bridge, Grosvenor Waterside offers proximity to Battersea Park and is just a short distance from Sloane Square underground station, connecting effortlessly to London's city centre. The Victoria mainlines and underground station (Victoria, Circle and District lines, zone 1) are also within close proximity.



These particulars, whilst believed to be accurate are set out as a general outline only for guidance and do not constitute any part of an offer or contract. Intending purchasers should not rely on them as statements of representation of fact, but must satisfy themselves by inspection or otherwise as to their accuracy. No person in this firm's employment has the authority to make or give any representation or warranty in respect of the property.