



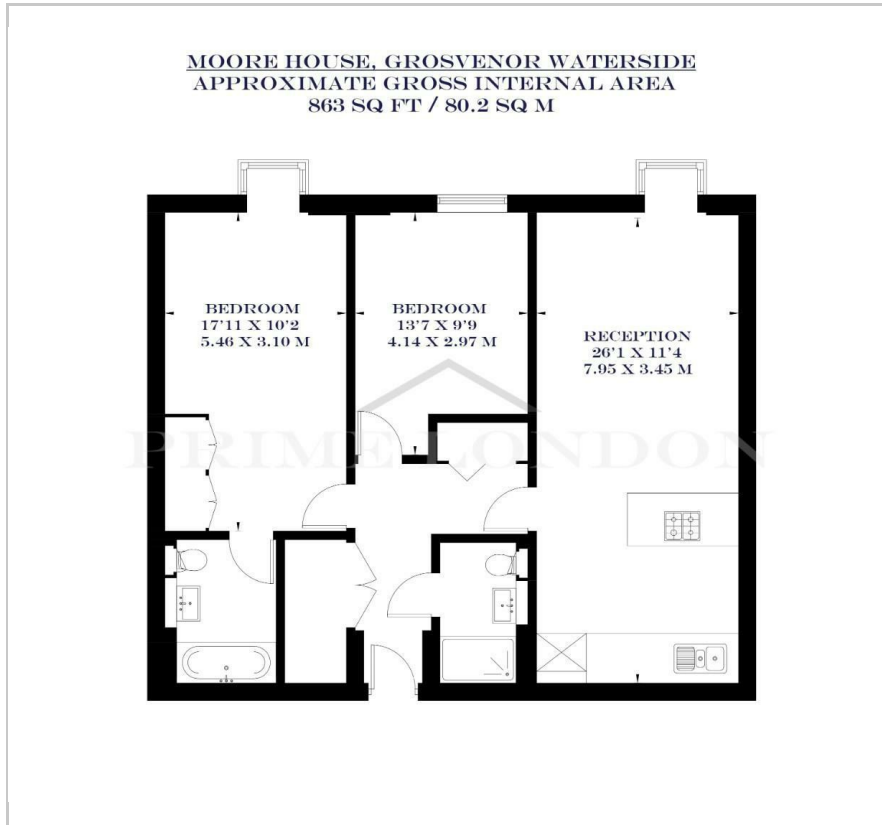
Moore House

Grosvenor Waterside, 2 Gatliff Road, SW1W 8DU

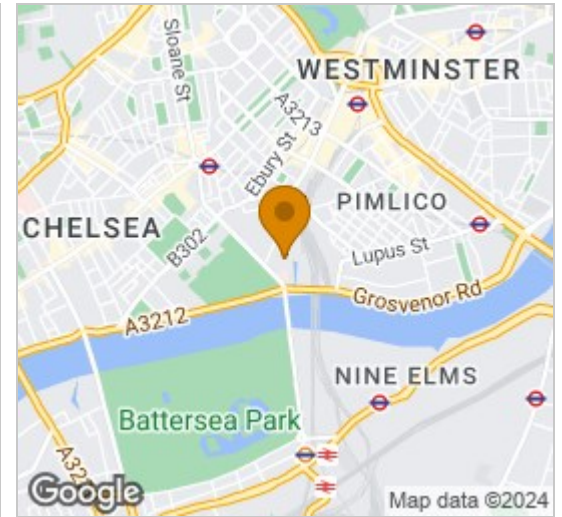
£1,038 Per Week



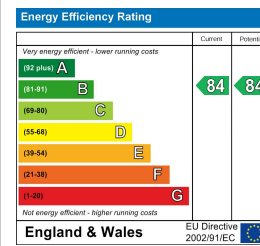
Floor Plan



Area Map



Energy Efficiency Graph



Viewing

By appointment. Contact us on 0207 052 1075 if you wish to arrange a viewing appointment for this property, or require further information.

- Two bedroom apartment
- 863 sq ft (80.2 sq m)
- Modern open-plan kitchen with Miele appliances
- On site facilities include spa and gym
- Furnished
- 24-hour concierge

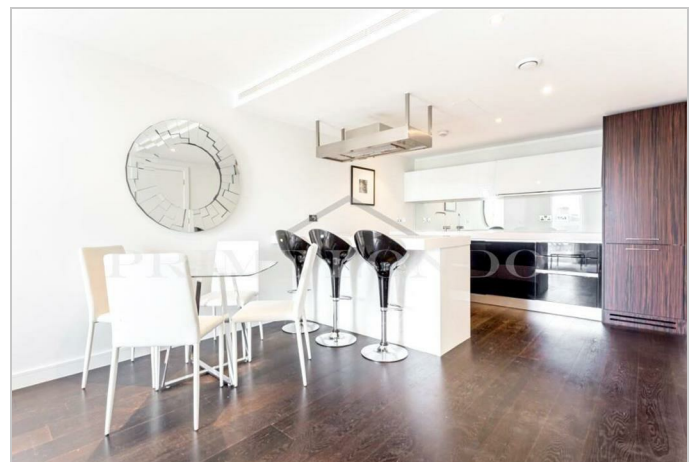


A stunning and spacious two-bedroom apartment located in Moore House, within the prestigious Grosvenor Waterside development in Chelsea, is available for lease through Prime London.

Boasting contemporary design, this property offers a modern open-plan kitchen equipped with Miele integrated appliances, including an additional wine fridge, leading to the expansive reception room decorated with elegant dark hardwood flooring. The principal bedroom features ample storage with two double cupboards and an en-suite bathroom with a shower over the bath, while a second double bedroom and a modern family shower room provide comfort and convenience.

Residents of this sought-after development enjoy access to a range of on-site facilities, including a 24-hour concierge service and a luxury spa gym.

Conveniently situated on the north side of the river by Chelsea Bridge, Grosvenor Waterside offers proximity to Battersea Park and is just a short distance from Sloane Square underground station, connecting effortlessly to London's city centre. The Victoria mainlines and underground station (Victoria, Circle and District lines, zone 1) are also within close proximity.



These particulars, whilst believed to be accurate are set out as a general outline only for guidance and do not constitute any part of an offer or contract. Intending purchasers should not rely on them as statements of representation of fact, but must satisfy themselves by inspection or otherwise as to their accuracy. No person in this firm's employment has the authority to make or give any representation or warranty in respect of the property.