

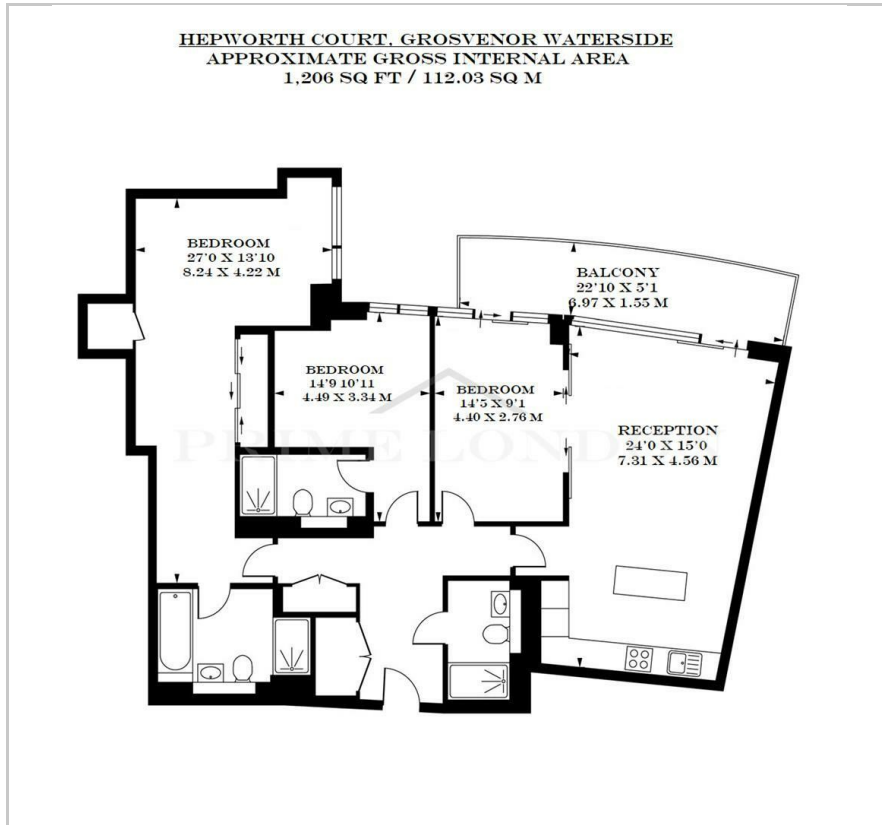
Hepworth Court

Gatliff Road, Grosvenor Waterside, SW1W 8QN

£1,377 Per Week



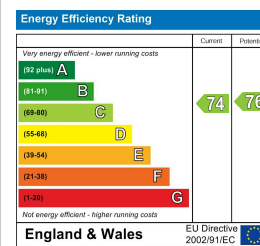
Floor Plan



Area Map



Energy Efficiency Graph



Viewing

By appointment. Contact us on 0207 052 1075 if you wish to arrange a viewing appointment for this property, or require further information.

- Large three bedroom apartment
- Residents' leisure suite
- Available now
- 1,206 square feet (112.3 sqm)
- Walking Distance to Sloane Square & Victoria Station
- 24 Hour concierge



This spacious three-bedroom apartment in Grosvenor Waterside, totalling 1,206 sq ft (112.3 sqm), is available for lease through Prime London.

The reception area includes an open-plan kitchen and opens up to a large balcony, providing a charming outlook and allowing natural light to fill the living area. The apartment includes three double-sized bedrooms (two with built-in wardrobe) and one with access to the balcony, as well as three bathrooms (two being en-suite), and the added benefit of being fully furnished.

Other amenities include a residents' gym, spa, and 24-hour concierge services. It is a perfect environment for modern living in one of London's most prestigious and dynamically changing areas.

Situated on the north side of the river by Chelsea Bridge, the open spaces of Battersea Park are also close by. The Victoria mainline and underground station (Victoria, Circle, and District lines, zone 1) are within close proximity. Grosvenor Waterside is located just half a mile away from Sloane Square underground station and within easy walking distance of fashionable Kings Road.



These particulars, whilst believed to be accurate are set out as a general outline only for guidance and do not constitute any part of an offer or contract. Intending purchasers should not rely on them as statements of representation of fact, but must satisfy themselves by inspection or otherwise as to their accuracy. No person in this firm's employment has the authority to make or give any representation or warranty in respect of the property.