



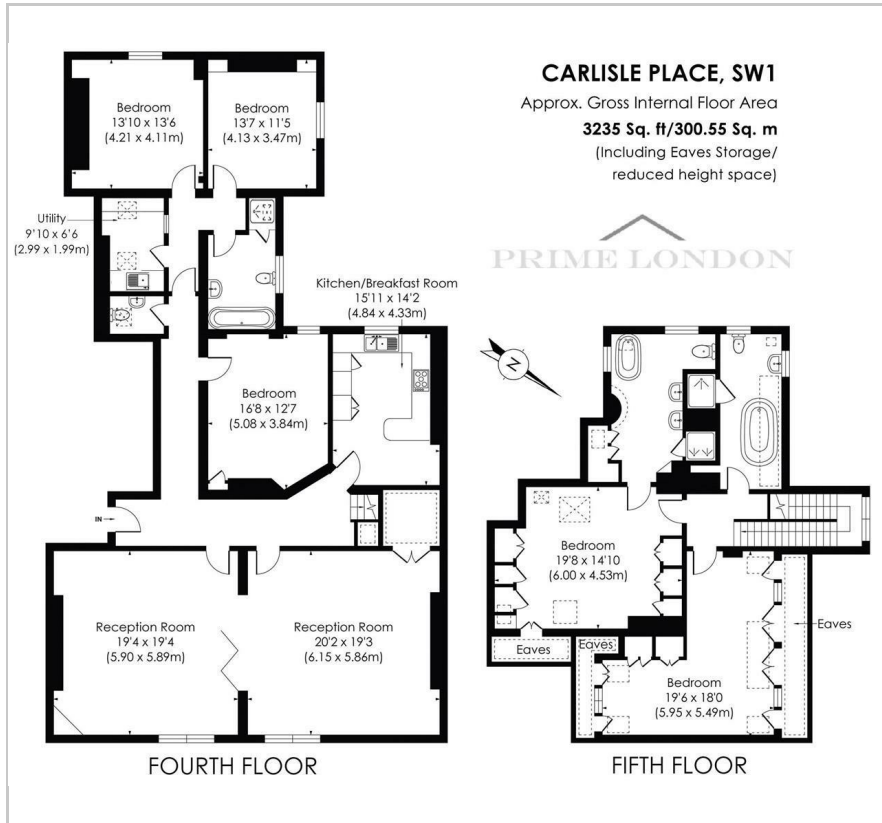
Carlisle Mansions

Carlisle Place, Victoria, SW1P 1HZ

Asking Price £4,399,950



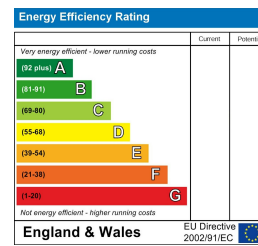
Floor Plan



Area Map



Energy Efficiency Graph



Viewing

Please contact our on 0207 052 1075 if you wish to arrange a viewing appointment for this property or require further information.

- Exceptionally refurbished and designed
- 3,235 sq ft (300.55 sqm)
- Perfect blend of characterful features and modern living
- Bespoke stained glass
- Wood burning stove
- Air conditioning to the principal bedrooms
- Lift within building
- Perfect turnkey family property
- Chain-free
- Porter, security and recently refurbished communal parts



An exceptionally refurbished and designed duplex apartment totalling 3,235 sq ft (300.55 sqm), the largest in the building (which has a lift), offering the perfect blend of characterful features and modern living, available exclusively through Prime London. The property's meticulous design maximises natural light and space (including through light tubes) whilst incorporating features such as bespoke stained glass, wood burning stoves, air conditioning to the principal bedrooms and modern connectivity through fibre-optic broadband, CAT 6 cabling and Sonos sound. The property is available chain-free, and offers a perfect turnkey family property with an exceptional finish. Carlisle Mansions benefits from a porter, security and recently refurbished communal parts and is located Carlisle Place, a quiet residential street a few minutes' walk from Westminster Cathedral and the extensive shopping facilities and amenities in this newly revamped area of Victoria. The international Victoria Station transport hub is also within a short walking distance.



These particulars, whilst believed to be accurate are set out as a general outline only for guidance and do not constitute any part of an offer or contract. Intending purchasers should not rely on them as statements of representation of fact, but must satisfy themselves by inspection or otherwise as to their accuracy. No person in this firm's employment has the authority to make or give any representation or warranty in respect of the property.