



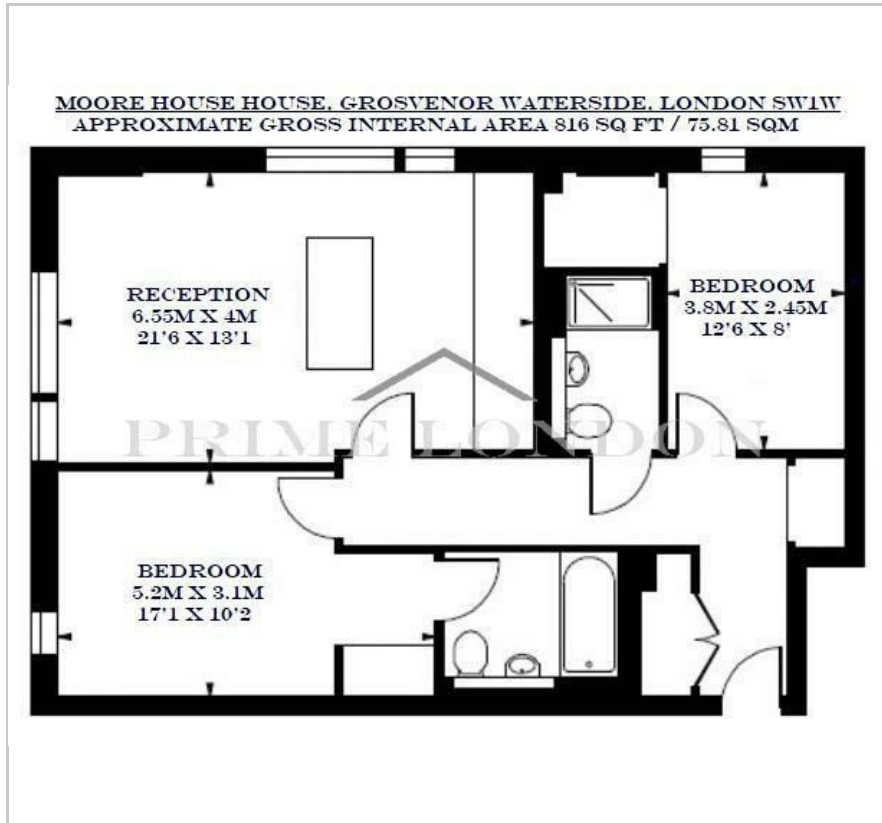
Moore House

2 Gatliff Road, Grosvenor Waterside, SW1W 8DT

£825 Per Week



Floor Plan



Area Map



Energy Efficiency Graph



Viewing

By appointment. Contact us on 0207 052 1075 if you wish to arrange a viewing appointment for this property, or require further information.

- Beautiful two bedroom ▪ 816 sq.ft (75.81 sqm) apartment
- Furnished ▪ 24 hour concierge
- Residents gym with spa ▪ 1 x parking space facilities



This impressive two bedroom apartment with parking in Grosvenor Waterside, available fully furnished, is available to rent through Prime London.

This 816 sq.ft (76sqm) apartment enjoys a dual aspect in a south-west direction. This apartment further benefits from a large open plan kitchen with island and reception room leading out onto a Juliet balcony, two bedrooms and two bathrooms of which the master is en-suite with walk in wardrobe.

Other benefits include a residents' gym, spa, and 24-hour concierge services. It is a perfect environment for modern living in one of London's most prestigious and dynamically changing areas.

Situated on the north side of the river by Chelsea Bridge, the open spaces of Battersea Park are also close by.

The Victoria mainline and underground station (Victoria, Circle and District lines, zone 1) is also within close proximity. Grosvenor Waterside is located just half a mile away from Sloane Square underground station and within easy walking distance of fashionable Kings Road.

Please note there is a bed in the master bedroom which is not pictured



These particulars, whilst believed to be accurate are set out as a general outline only for guidance and do not constitute any part of an offer or contract. Intending purchasers should not rely on them as statements of representation of fact, but must satisfy themselves by inspection or otherwise as to their accuracy. No person in this firm's employment has the authority to make or give any representation or warranty in respect of the property.