



Bedfordbury

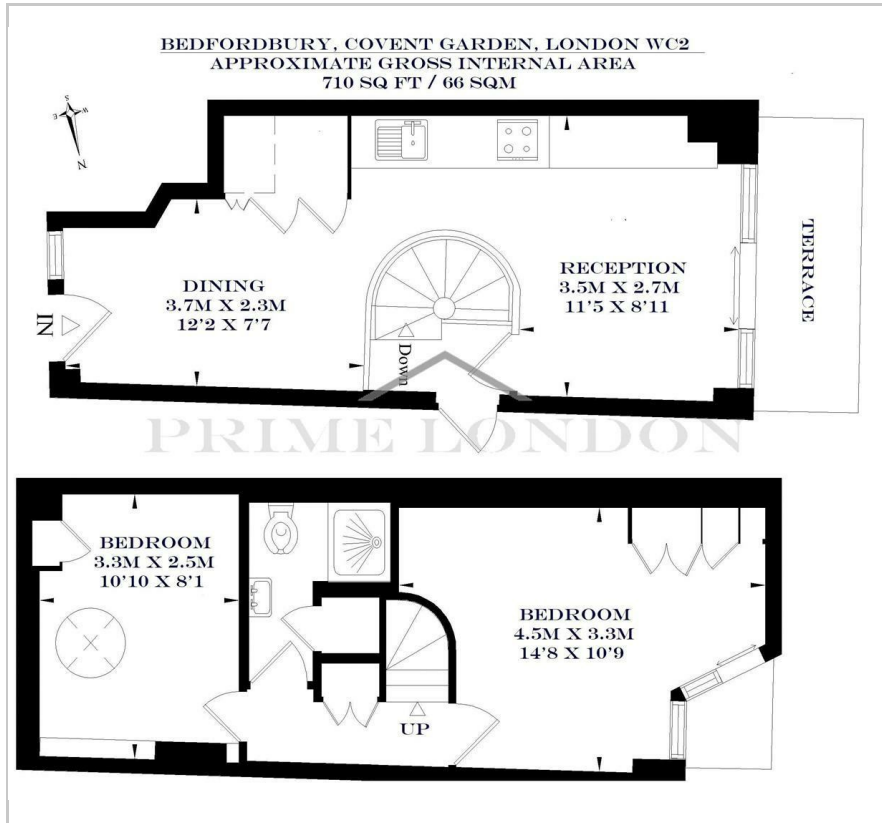
Covent Garden, WC2N 4BP

£650 Per Week





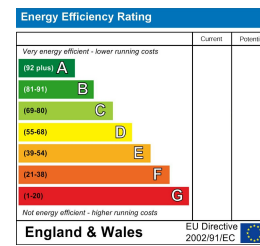
## Floor Plan



## Area Map



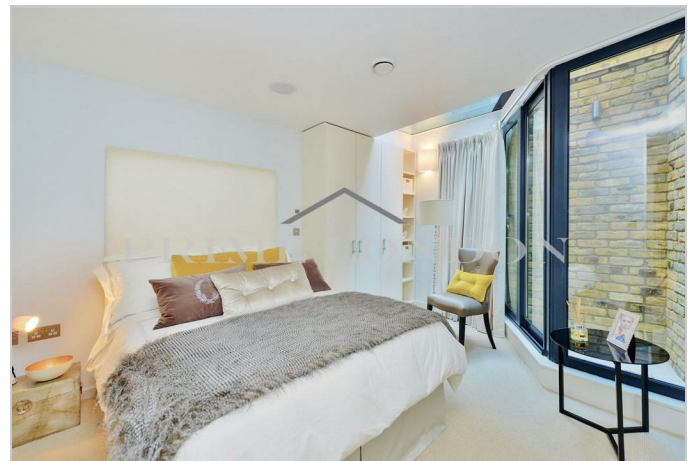
## Energy Efficiency Graph



## Viewing

Please contact our on 0207 052 1075 if you wish to arrange a viewing appointment for this property or require further information.

- Fully air conditioned
- Art gallery conversion
- Outside space and light well
- Amazing location



A truly stunning duplex two bedroom fully air conditioned apartment in Covent Garden, designed intelligently to the most exacting of specifications, available for lease exclusively through Prime London.

The property offers LED mood lighting, SONOS wireless integrated sound system, under floor heating, electric retractable glass garden canopy, solid oak flooring and spiral staircase, fully integrated kitchen with natural stone surface and integrated lighting features, marble tiled shower with integrated TV, heat recovery system for bedrooms, built-in storage, and fully electronic glass shading in the master bedroom.

The property is located 250 metres from Covent Garden Market, 150 metres from Trafalgar Square, directly parallel to St Martin's Lane and directly adjacent to the Coliseum Theatre. Locations do not get better.



These particulars, whilst believed to be accurate are set out as a general outline only for guidance and do not constitute any part of an offer or contract. Intending purchasers should not rely on them as statements of representation of fact, but must satisfy themselves by inspection or otherwise as to their accuracy. No person in this firm's employment has the authority to make or give any representation or warranty in respect of the property.