

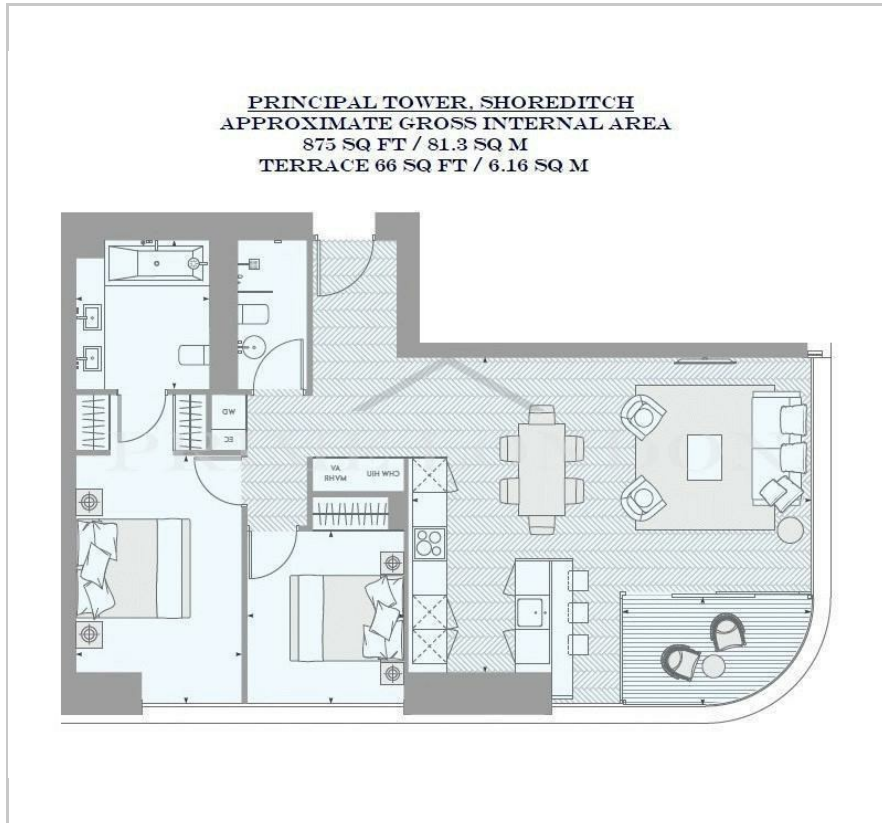
Principal Tower

115 Worship Street, Shorditch, EC2A 2BA

Asking Price £1,500,000



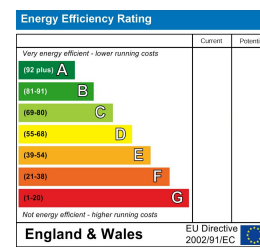
Floor Plan



Area Map



Energy Efficiency Graph



Viewing

Please contact our on 0207 052 1075 if you wish to arrange a viewing appointment for this property or require further information.

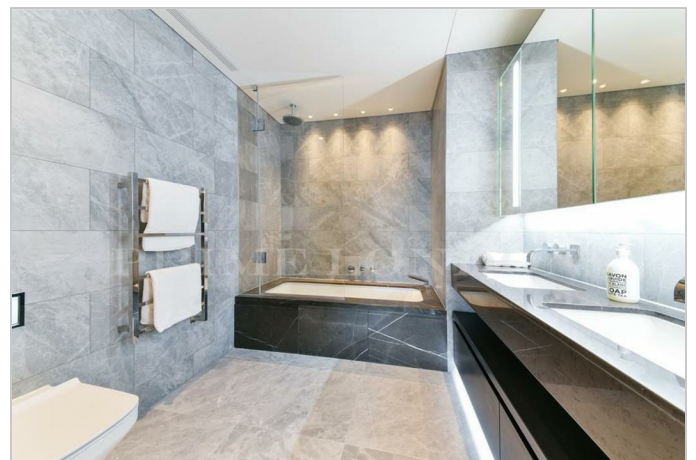
- Dual aspect two bedroom ▪ 875 sq ft / 81.3 sq m apartment
- Private balcony ▪ Excellent location
- Sauna, jacuzzi, steam room ▪ 24 hour concierge service and gym



This extremely well positioned luxury two bedroom dual aspect apartment, located in the beautifully designed Principal Tower and boasting excellent views over the city, is available for chain free sale through Prime London. Every apartment has been spatially configured in order to maximise the impact of the views beyond, with this property featuring a generous open plan living area with excellent 66 sq ft private balcony, two spacious double bedrooms with ample built in storage, and two beautifully finished bathrooms (one of which is en suite).

Principal Tower enjoys a prestigious location overlooking the heart of the City of London, the top global financial centre and Shoreditch, the trend setting capital of the world. This rare opportunity to live at this sought after location means both the world's financial powerhouse of London Stock Exchange and high fashion brands at the Royal Exchange are all just a short walk away, as are five major transport hubs, thus making it convenient to access all corners of the capital with ease and speed.

Images are for illustrative purposes only, and are intended as a guide to finishes and layout



These particulars, whilst believed to be accurate are set out as a general outline only for guidance and do not constitute any part of an offer or contract. Intending purchasers should not rely on them as statements of representation of fact, but must satisfy themselves by inspection or otherwise as to their accuracy. No person in this firm's employment has the authority to make or give any representation or warranty in respect of the property.