



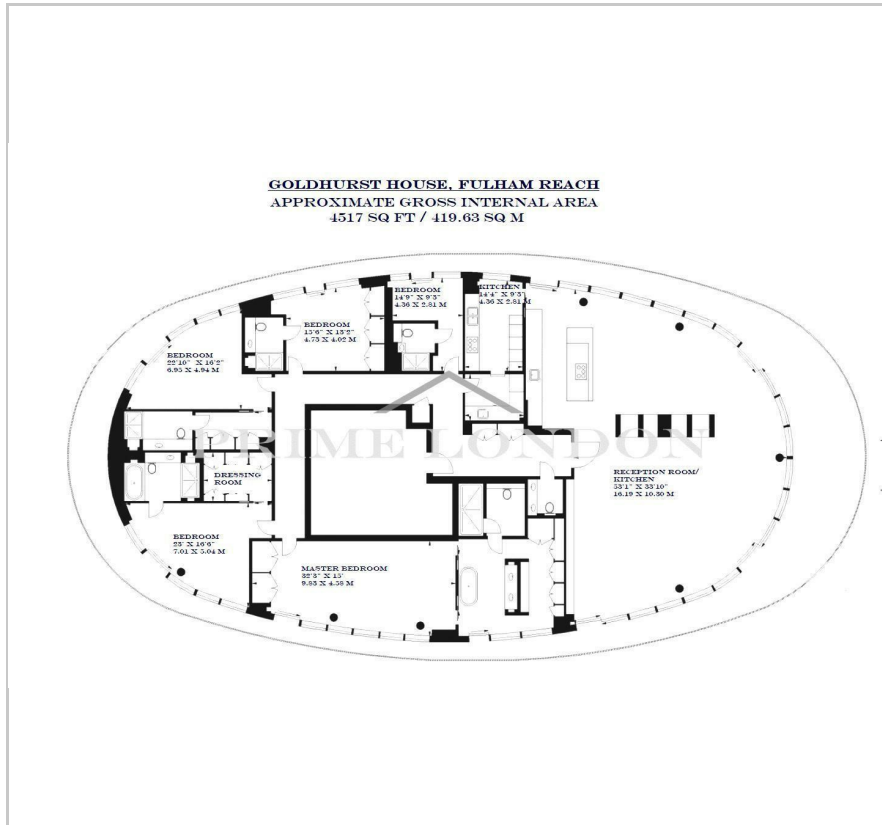


Goldhurst House
Parr's Way, Fulham Reach, W6 9AN
Asking Price £10,500,000

-  5
-  5
-  1
- 

Floor Plan



Area Map



Energy Efficiency Graph

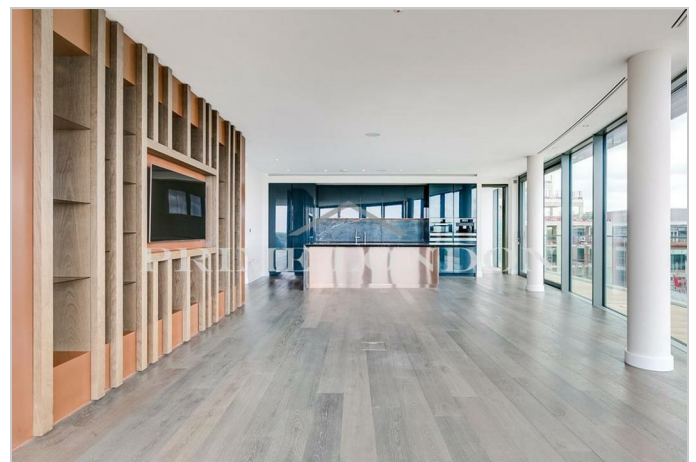
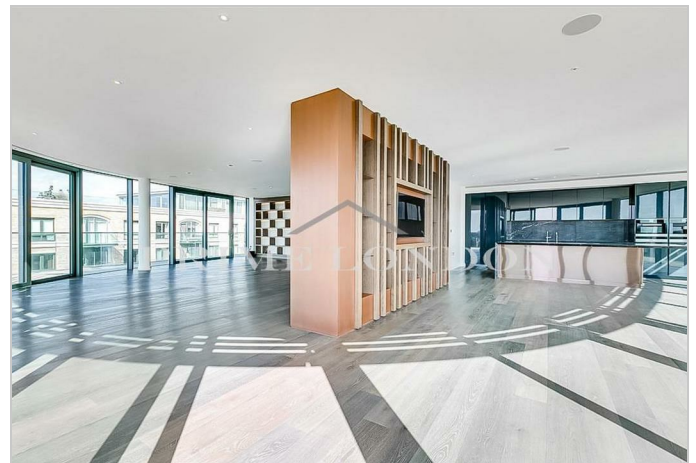


Viewing

By appointment. Contact us on 0207 052 1075 if you wish to arrange a viewing appointment for this property, or require further information.

- Stunning five bedroom ▪ 4,517 sq ft / 419.63 sq m penthouse
- Full wrap-around balcony ▪ Two dressing rooms
- Two underground garages ▪ 24 hour concierge
- Pool, sauna, steam room and treatment room ▪ Cinema, virtual golf, and wine cellar

Investment property. Set in an ideal London location overlooking the River Thames, The Goldhurst House Penthouse sets new standards in superior living and is available for sale through Prime London. The five bedroom 4,517 sq ft (419.63 sq m) penthouse is finished to an exquisite standard throughout and benefits from having a huge open plan reception and dining area with two state of the art kitchens with integrated Miele appliances, wine cooler and a marble kitchen worktops. Further benefits include access to an expansive fully wrap-around private balcony with views 360 views, including towards the River Thames. The large floor to ceiling windows allows for natural light to flood the living space and the dark wood helps offset, to create a wonderful harmony. The property further comprises five bedrooms, all with plentiful built in storage and ensuite bathrooms. The stunning master suite and second bedroom are both complete with significant dressing rooms, and the property benefits from a further guest WC in the hallway. The 24-hour hotel-style concierge is at hand to provide a personalised service, designed to meet your day-to-day needs. Complete with private garage exclusive to the Penthouse. Featuring porcelain-tiled flooring and lacquered timber walls. You will also have access to high specification gym and spa with swimming pool, golf simulator and cinema room along Regular wine tasting events held in the Private Members' Club. As a resident you can store your own wine in the temperature and humidity-controlled cellar. The gentle organic curves of the glass façade and the beautiful architectural lines draw daylight right to the heart of the building. From the Terrace area, spectacular views of the River Thames unfold. Designed by leading architects John Thompson & Partners, the elegant contemporary architecture retains strong links with the past, reflecting the history and character of the local area. Sleek and elegant, daylight fills the space with light. Fulham R



These particulars, whilst believed to be accurate are set out as a general outline only for guidance and do not constitute any part of an offer or contract. Intending purchasers should not rely on them as statements of representation of fact, but must satisfy themselves by inspection or otherwise as to their accuracy. No person in this firm's employment has the authority to make or give any representation or warranty in respect of the property.