



106 Berwick Street

Soho, W1F 0DX

Asking Price £4,750,000



Floor Plan



Area Map



Energy Efficiency Graph



Viewing

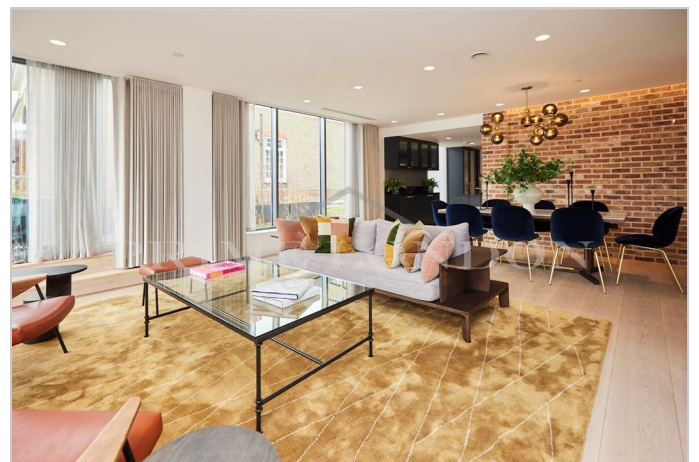
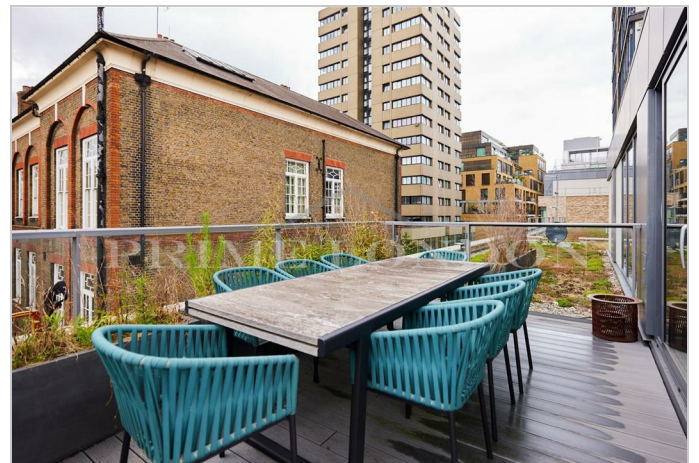
By appointment. Contact us on 0207 052 1075 if you wish to arrange a viewing appointment for this property, or require further information.

- Loft style duplex penthouse ▪ 1,620 sq ft / 150.52 sq m apartment
- Two Large Private Terraces ▪ Superb central Location (c.1023 sq.ft)
- Exposed brick slip walls ▪ Turn Key - Available Furnished

This stunning loft style duplex penthouse apartment, set in a brand new boutique development in the heart of Soho, possess exceptional design-work featuring brick slip feature walls, Buster and Punch brassware, wide-plank engineered oak flooring, and extensive outside space, and is available for chain free sale through Prime London.

The designers have undertaken more than just a residential scheme, they have contributed to the regeneration of Berwick Street itself, introducing new retail space and a hotel, whilst the street still retains the charm of the famous Berwick Street market. Walkers Court to the south has too been transformed by West End landlord Soho Estates, with the introduction of the new Boulevard Theatre and Restaurant just yards from the development's discreet front door.

Images and floorplan are a guide and are intended to give an approximation of finishes and layout.



These particulars, whilst believed to be accurate are set out as a general outline only for guidance and do not constitute any part of an offer or contract. Intending purchasers should not rely on them as statements of representation of fact, but must satisfy themselves by inspection or otherwise as to their accuracy. No person in this firm's employment has the authority to make or give any representation or warranty in respect of the property.