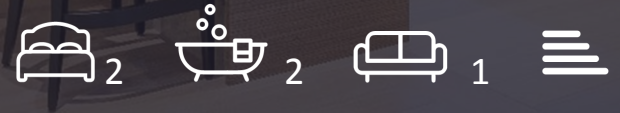




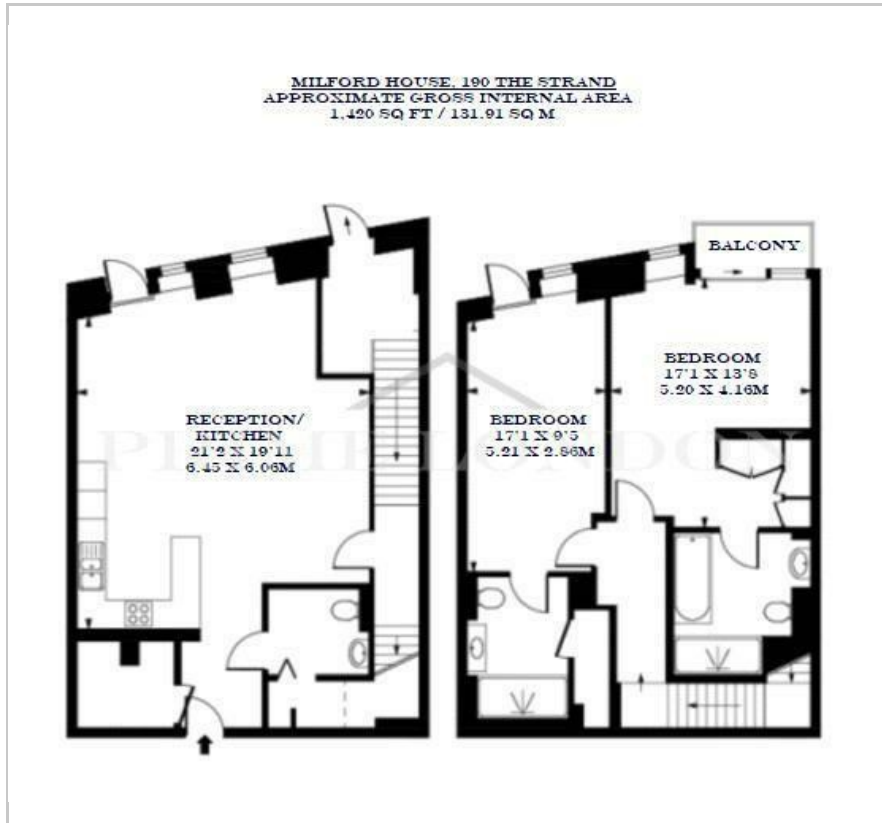
Milford House

190 Strand, WC2R 1DT

Asking Price £2,500,000



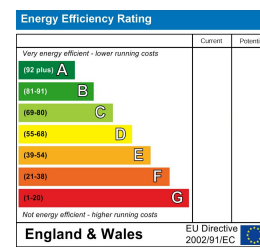
Floor Plan



Area Map



Energy Efficiency Graph



Viewing

Please contact our on 0207 928 6663 if you wish to arrange a viewing appointment for this property or require further information.

- Duplex two bedroom ▪ Secure parking space apartment
- Investment property ▪ Private residents' cinema
- State of the art gym and ▪ 24 hour concierge service swimming pool/spa



Investment purchase. This luxurious and spacious two bedroom duplex apartment of 1,420 sq ft / 131.91 sq m, situated in a lovely quiet position within the premium 190 Strand development and close to the banks of the River Thames and Covent Garden, is available for sale through Prime London. The property also comes with a secure parking space. This beautiful property benefits from being arranged over two floors, adding to the sense of space. On the first floor you will find a large open-plan reception room with dining area, a smart kitchen with Miele integrated appliances. Though the hall and up the stairs you will find two substantial double bedrooms, one with dressing area and private balcony, and both with their own luxury bathroom suites. The property also benefits from comfort cooling, solid parquet wood flooring, two Juliette style balconies, and a laundry closet. 190 The Strand benefits from a five-star 24 hour concierge service, resident's private cinema, state of the art gym and swimming pool/spa.



These particulars, whilst believed to be accurate are set out as a general outline only for guidance and do not constitute any part of an offer or contract. Intending purchasers should not rely on them as statements of representation of fact, but must satisfy themselves by inspection or otherwise as to their accuracy. No person in this firm's employment has the authority to make or give any representation or warranty in respect of the property.