



## Dorset House

Ram Quarter, Wandsworth, SW18 1UB

Asking Price £1,150,000



4



3

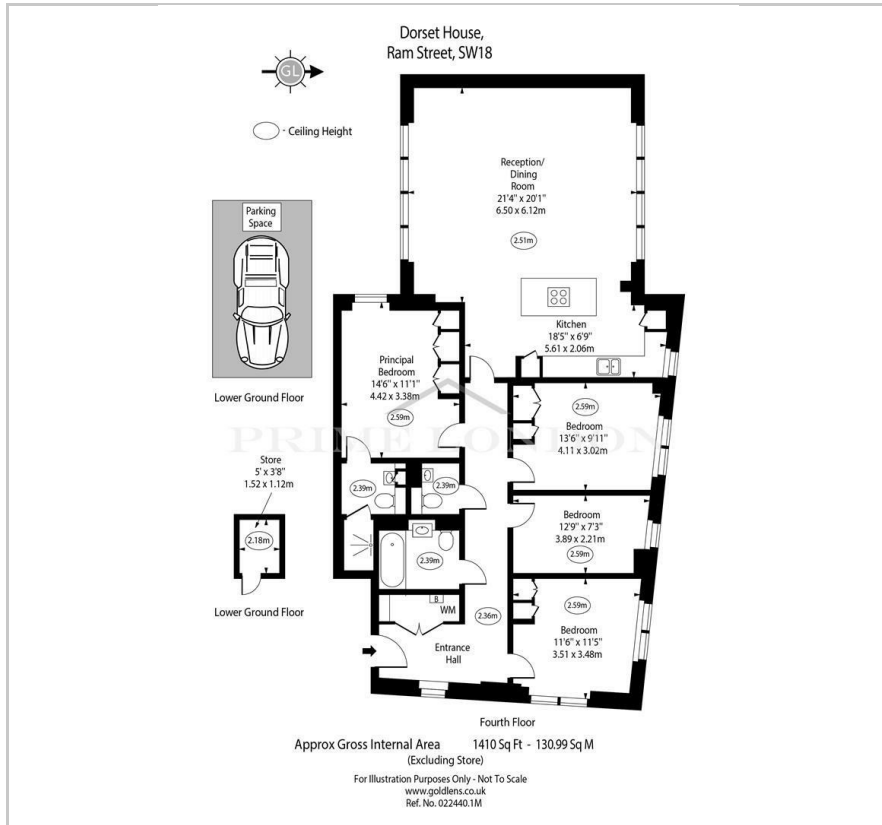


1



B

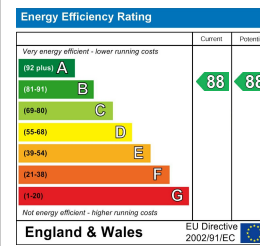
## Floor Plan



## Area Map



## Energy Efficiency Graph



## Viewing

By appointment. Contact us on 0207 052 1075 if you wish to arrange a viewing appointment for this property, or require further information.

- Rare four bedroom apartment
- Underground parking and storage unit
- Chain free
- Beautiful garden views
- 1,410 sq ft / 131 sq m
- Underfloor heating and
- 24 hour concierge comfort cooling



Prime London proudly presents an exceptional and rare-to-find four-bedroom apartment within the sought-after Ram Quarter development in the heart of Wandsworth. This apartment offers underground parking and an additional secure storage unit and is chain free.

Situated on the fourth floor, this spacious contemporary apartment spans 1410 sq ft/131 sq m, providing both stylish and modern living. The open-plan layout of the kitchen/living room creates an ideal space for entertaining and dining. Large doors accessing the Juliet balcony on either side of the living area allow for an open-air ambiance, offering views onto the charming residents-only garden. The kitchen is fully integrated with high-end appliances.

The apartment features four bedrooms, with the master boasting ample inbuilt storage and a modern ensuite bathroom with a walk-in shower. A sizable family bathroom serves the remaining three bedrooms, with the added convenience of an extra separate w/c. Throughout the apartment, underfloor heating and comfort cooling enhance the living experience, complemented by the highly advantageous 24-hour concierge service.

Dorset House is a part of the prestigious Ram Quarter development, which is centrally located in Wandsworth. With Wandsworth Town station just a short walk away, this property ensures convenient access to central London.

The residence is moments away from Old York Road, offering a village-like atmosphere and a variety of popular independent shops, restaurants, and bars. Residents have a wealth of nearby activities, including the recently opened Padel Yard and Parthian Climbing Centre. The Southside shopping Centre, known for its excellent shopping facilities, supermarkets, and cinema, is also in close proximity.



These particulars, whilst believed to be accurate are set out as a general outline only for guidance and do not constitute any part of an offer or contract. Intending purchasers should not rely on them as statements of representation of fact, but must satisfy themselves by inspection or otherwise as to their accuracy. No person in this firm's employment has the authority to make or give any representation or warranty in respect of the property.