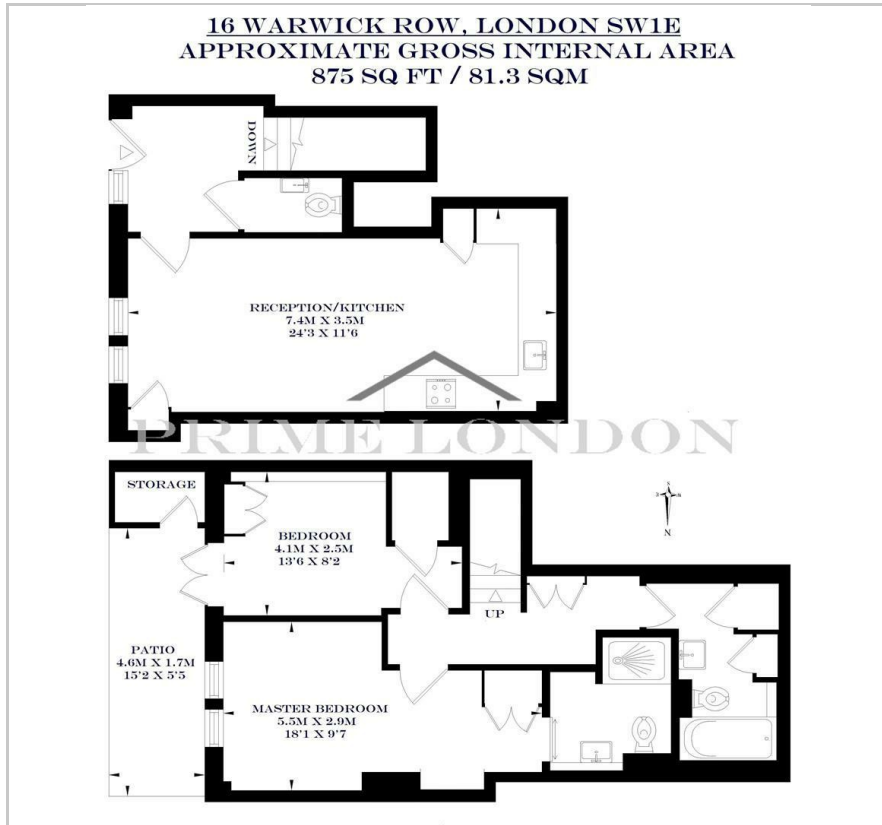


16 Warwick Row
St James's Park, SW1E 5ER
Asking Price £835,000

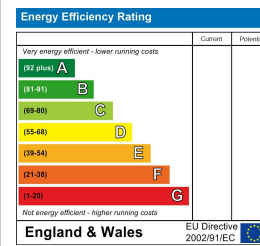
Floor Plan



Area Map



Energy Efficiency Graph



Viewing

By appointment. Contact us on 0207 052 1075 if you wish to arrange a viewing appointment for this property, or require further information.

- Duplex apartment
- 875 sq ft (82 sqm)
- Yards from Buckingham Palace
- Secure position
- Landscaped courtyard
- High specification

An incredibly located and highly specified duplex apartment, available exclusively through Prime London in this secure position. The property boasts a well proportioned 875 sq ft (82 sqm), with access through a landscaped courtyard to offer a quiet aspect and position so rare this centrally, just a few hundred yards from Buckingham Palace Gardens and moments from Buckingham Palace. The property is less than a 10 minutes walk to Westminster, Belgravia and 5 minutes to the major transport hub of Victoria Station.



These particulars, whilst believed to be accurate are set out as a general outline only for guidance and do not constitute any part of an offer or contract. Intending purchasers should not rely on them as statements of representation of fact, but must satisfy themselves by inspection or otherwise as to their accuracy. No person in this firm's employment has the authority to make or give any representation or warranty in respect of the property.