

Imperial House

Kensington, 11-13 Young Street, W8 5EH

£6,500 Per Week



Floor Plan



Area Map



Energy Efficiency Graph



Viewing

By appointment. Contact us on 0207 052 1075 if you wish to arrange a viewing appointment for this property, or require further information.

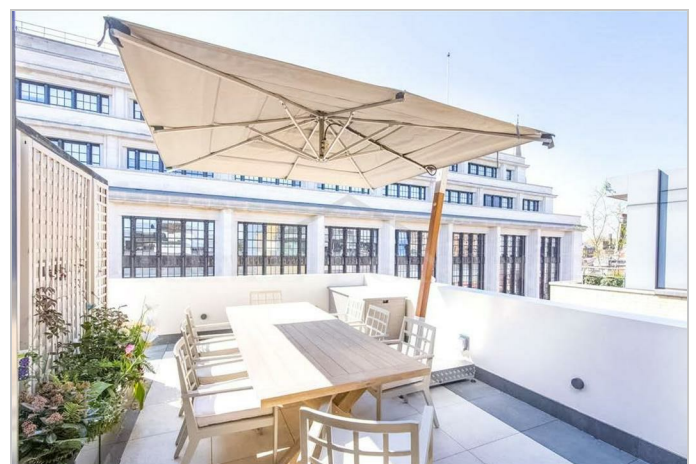
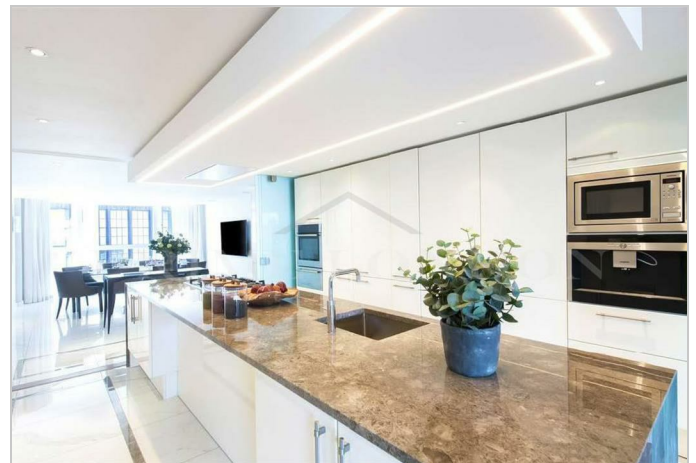
- Beautiful Three Bedroom ▪ 3,059 Sq ft (284.19 sqm) Penthouse
- Amazing Views of London ▪ Two Private Roof Terraces
- Lift Access ▪ On site porter

This beautiful three bedroom penthouse situated in the heart of Kensington, offering over 3,059 sq ft (284.19 sq m) is available for lease through Prime London.

This property includes three large double bedrooms, two en-suite bathrooms including a family bathroom, a massive open plan fully integrated kitchen and a stunning reception/dining room on a separate floor. This penthouse has an amazing customized glass staircase which offers endless views all across London which takes you onto another floor which leads you to a spacious living area with ample amount of natural light. Two amazing private terraces that has been extended with comfortable seating and an outdoor dining area.

Imperial house comes with an on site porter to help you along your way, lift access and 24 hour maintenance services. As well as those benefits, the apartment comes ample storage space, built in audio visual system, underfloor heating and air conditioning.

Local stations including High street Kensington and Notting Hill gate are a stone throw away with Hyde park almost opposite.



These particulars, whilst believed to be accurate are set out as a general outline only for guidance and do not constitute any part of an offer or contract. Intending purchasers should not rely on them as statements of representation of fact, but must satisfy themselves by inspection or otherwise as to their accuracy. No person in this firm's employment has the authority to make or give any representation or warranty in respect of the property.