

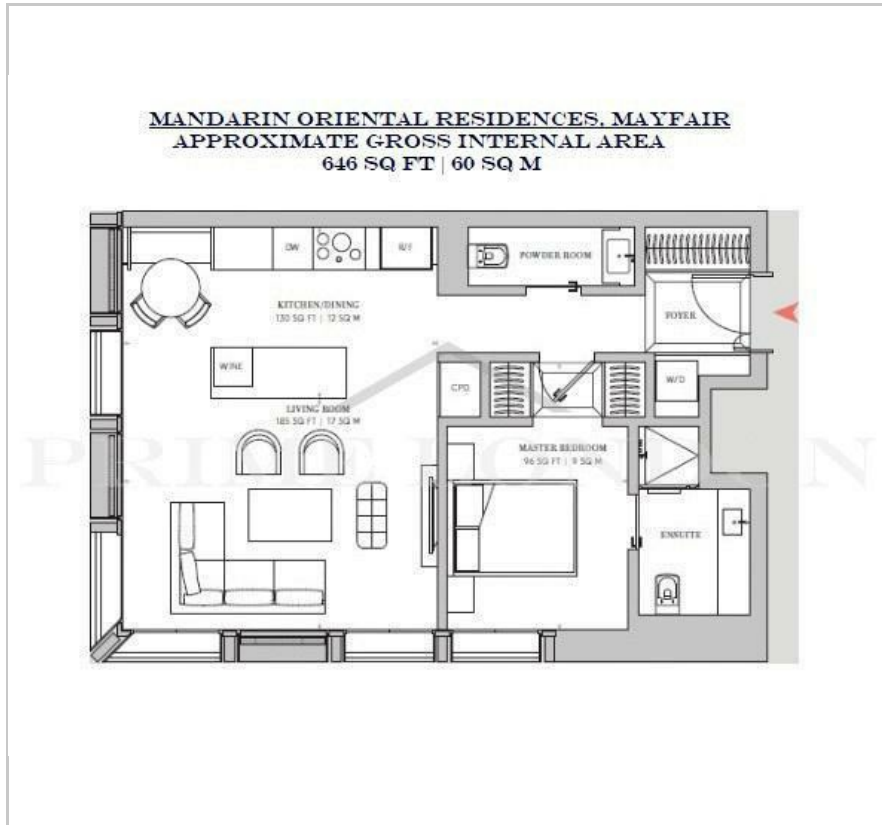
Mandarin Oriental Residences

22 Hanover Square, Mayfair, W1S 1JP

£1,800 Per Week



Floor Plan



Area Map



Energy Efficiency Graph



Viewing

By appointment. Contact us on 0207 052 1075 if you wish to arrange a viewing appointment for this property, or require further information.

- Exquisite apartment
- Valet Parking
- House keeping
- 646 sq ft (60 sqm)
- 24 hour Concierge
- Prestigious location



Introducing an exceptional opportunity for discerning residents - a brand new, one bedroom apartment in the illustrious Mandarin Residence, available for rent through Prime London.

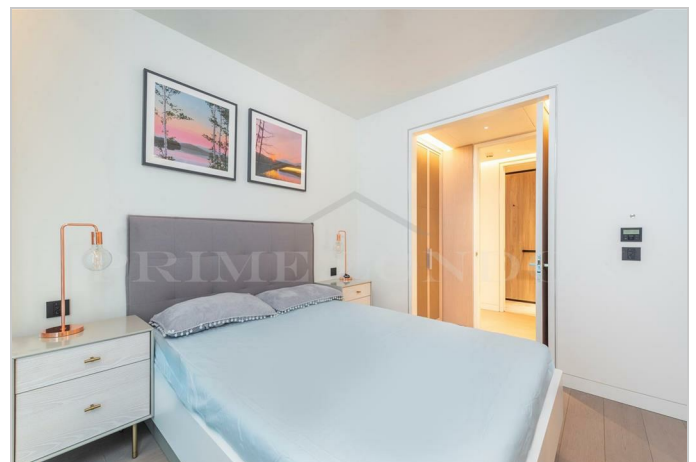
Nestled on Hanover Square, the oldest square in Mayfair, it presents a gateway to the finest offerings of both Mayfair and London. This exceptional property boasts an open plan living area seamlessly merging with a fully fitted kitchen, offering a space designed for modern, sophisticated living. The generously sized bedroom ensures comfort and tranquility, while the modern bathrooms exude elegance and functionality.

The development itself redefines luxury, offering amenities that combine the best of hotels and the comfort of residences within a single building. A residential lounge provides a relaxing retreat, complemented by a concierge service and housekeeping to cater to your every need. Experience the breathtaking views from the roof terrace bar or indulge in ultimate relaxation in the 25-meter heated indoor pool.

Located between the renowned Bond Street and Regent Street, Hanover Square places you just moments away from London's most coveted destinations. The city's finest restaurants, clubs, shops, and galleries await at your doorstep, offering a lifestyle of unparalleled convenience and indulgence.

Hanover Square resides in the heart of London, surrounded by Soho to the east, Fitzrovia and Marylebone to the north, Piccadilly and St James's to the south, and Hyde Park, Belgravia, and Knightsbridge to the west. The Elizabeth Line, a remarkable addition, ensures swift connectivity for residents. Travel directly to the City and Canary Wharf within minutes and reach Heathrow Airport in under half an hour, making this location exceptionally well-connected.

Please note that photographs may offer general representations of the development and may not depict the specific flat.



These particulars, whilst believed to be accurate are set out as a general outline only for guidance and do not constitute any part of an offer or contract. Intending purchasers should not rely on them as statements of representation of fact, but must satisfy themselves by inspection or otherwise as to their accuracy. No person in this firm's employment has the authority to make or give any representation or warranty in respect of the property.

21 Grosvenor Gardens, Belgravia, London SW1W 0BP | Palace View, 131 Lambeth Road, London SE1 7BT

Tel: 0207 052 1075 | 0207 928 6663 Email: Office@PrimeLondonResidential.com www.PrimeLondonResidential.com