



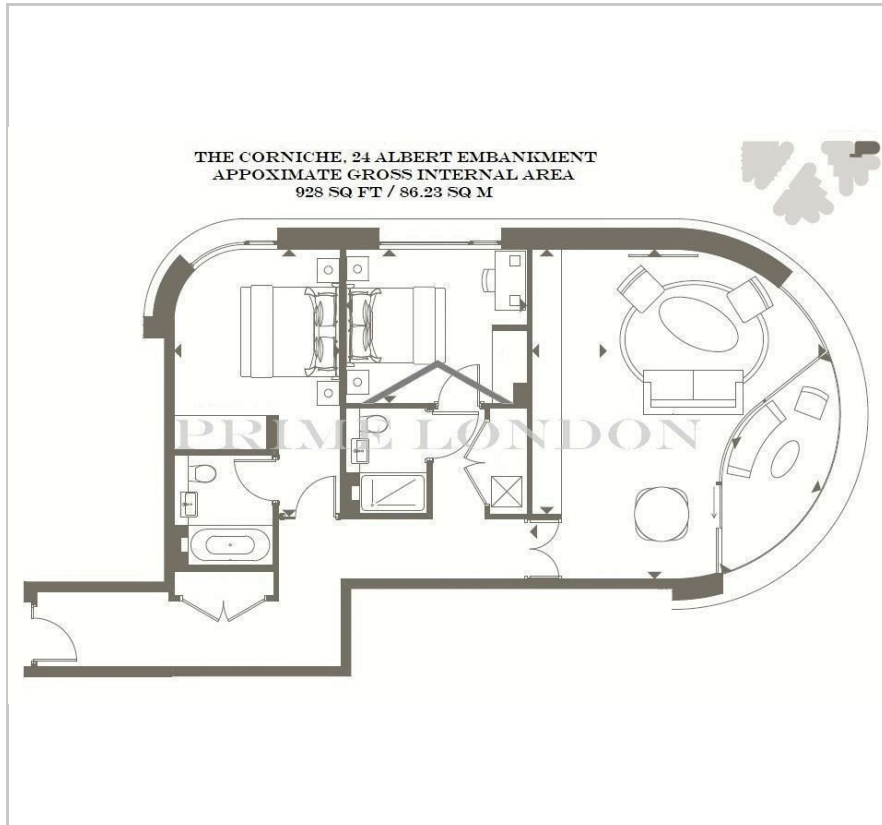
The Corniche

24 Albert Embankment, SE1 7GJ

£875 Per Week



Floor Plan



Area Map



Energy Efficiency Graph



Viewing

By appointment. Contact us on 0207 928 6663 if you wish to arrange a viewing appointment for this property, or require further information.

- Two bedroom apartment
- Fully furnished
- 928 sq ft (86.21 sqm)
- Private balcony
- Gym, spa, pool, and Sky
- 24 hour concierge Lounge



A modern and bright south facing 928 sq ft (86.21 sqm) two bedroom apartment with balcony (which has views of the River Thames), available for lease through Prime London in The Corniche, 24 Albert Embankment.

The apartment also comes fully furnished. Located in an enviable position on the bank of the River Thames, The Corniche (designed by Foster & Partners) captures some of London's most exquisite views, not only of the Houses of Parliament and the River Thames, but also the Tate Britain, London Eye and the City.

The development includes extensive residents facilities including a restaurant, gym, spa, pool and cinema, and also commercial spaces such as restaurants and cafes focused around a well considered and inviting public space.



These particulars, whilst believed to be accurate are set out as a general outline only for guidance and do not constitute any part of an offer or contract. Intending purchasers should not rely on them as statements of representation of fact, but must satisfy themselves by inspection or otherwise as to their accuracy. No person in this firm's employment has the authority to make or give any representation or warranty in respect of the property.