

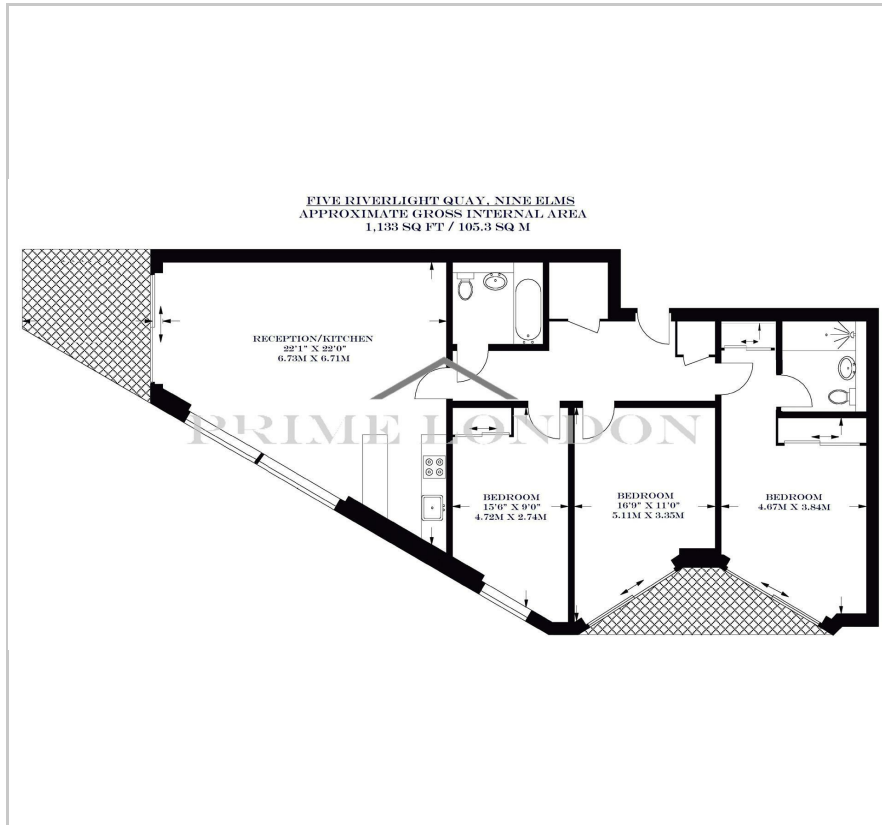
Five Riverlight Quay

Nine Elms, SW11 8DX

£1,150 Per Week



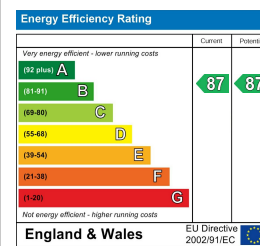
## Floor Plan



## Area Map



## Energy Efficiency Graph



## Viewing

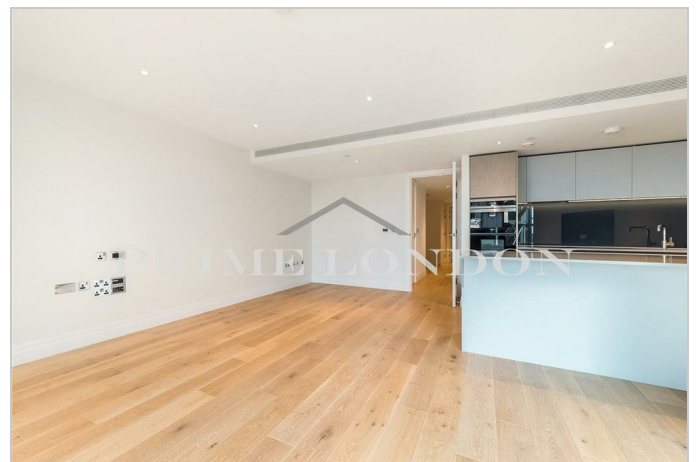
By appointment. Contact us on 0207 928 6663 if you wish to arrange a viewing appointment for this property, or require further information.

- Unfurnished
- On-site leisure and resident's facilities
- 24 hours concierge
- 1,133 sq ft of living space
- Prow style apartment facilities
- 5 minute walk to Battersea Power Station

An 1,133 sq ft three bedroom prow style apartment, with an extensive and spacious living space, available for lease through Prime London.

The property additionally offers two balconies and en suite to master, high specification level throughout, comfort cooling and under floor heating.

An exclusive residents Clubhouse offers a unique third space between home and work which to socialise, exercise and be entertained, from a private screening room to virtual golf facilities; a residents club lounge and library and a 15m swimming pool, state-of-the-art gymnasium and spa.



These particulars, whilst believed to be accurate are set out as a general outline only for guidance and do not constitute any part of an offer or contract. Intending purchasers should not rely on them as statements of representation of fact, but must satisfy themselves by inspection or otherwise as to their accuracy. No person in this firm's employment has the authority to make or give any representation or warranty in respect of the property.