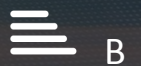




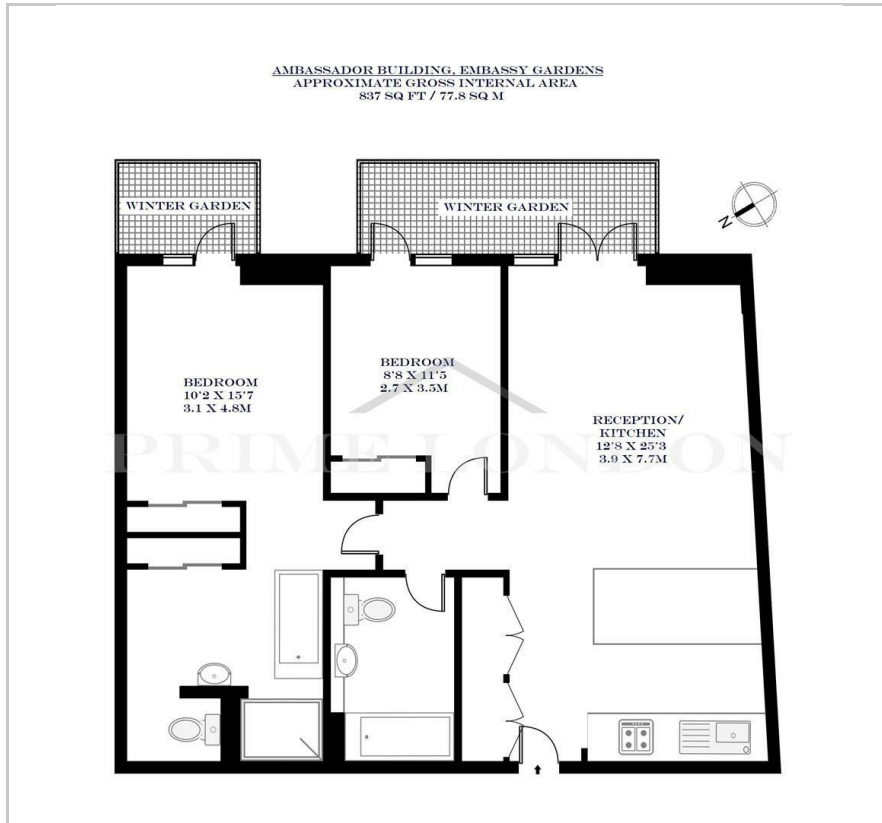
Ambassador Building

Embassy Gardens, Nine Elms, SW11 7BP

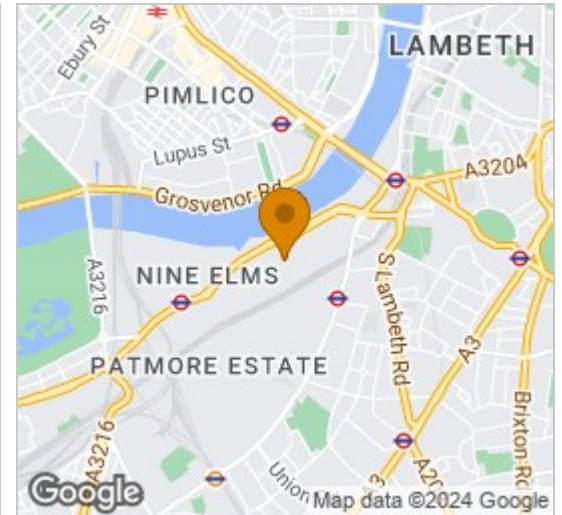
Asking Price £925,000



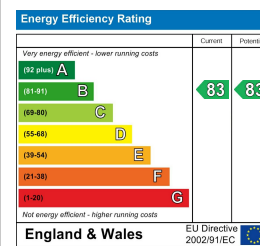
Floor Plan



Area Map



Energy Efficiency Graph



Viewing

By appointment. Contact us on 0207 928 6663 if you wish to arrange a viewing appointment for this property, or require further information.

- Modern two bedroom ▪ 837 sq ft / 77.8 sq m apartment
- Chain free
- Walnut parquet flooring and comfort cooling
- Gym, sky pool & deck, jacuzzi ▪ 24 hour concierge and cinema

This high specification contemporary two bedroom apartment with two winter gardens and set within the sought after Ambassador Building, Embassy Gardens, is available for chain free sale through Prime London.

The apartment offers an excellent living space at 837 sq ft / 77.8 sq m, and comprises an open plan kitchen and living area, two well proportioned double bedrooms with ample built in storage, two stylish bathrooms (one en suite) and floor to ceiling windows.

Designed to the highest specification, the apartment boasts comfort cooling and abundant natural light reminiscent of a Manhattan loft apartment.

Located on the banks of the Thames and near London's cultural South Bank, residents not only enjoy a wealth of the Capital's finest attractions and amenities practically on their doorstep but also premium resident facilities including an exclusive private club and health spa.



These particulars, whilst believed to be accurate are set out as a general outline only for guidance and do not constitute any part of an offer or contract. Intending purchasers should not rely on them as statements of representation of fact, but must satisfy themselves by inspection or otherwise as to their accuracy. No person in this firm's employment has the authority to make or give any representation or warranty in respect of the property.