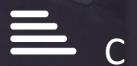




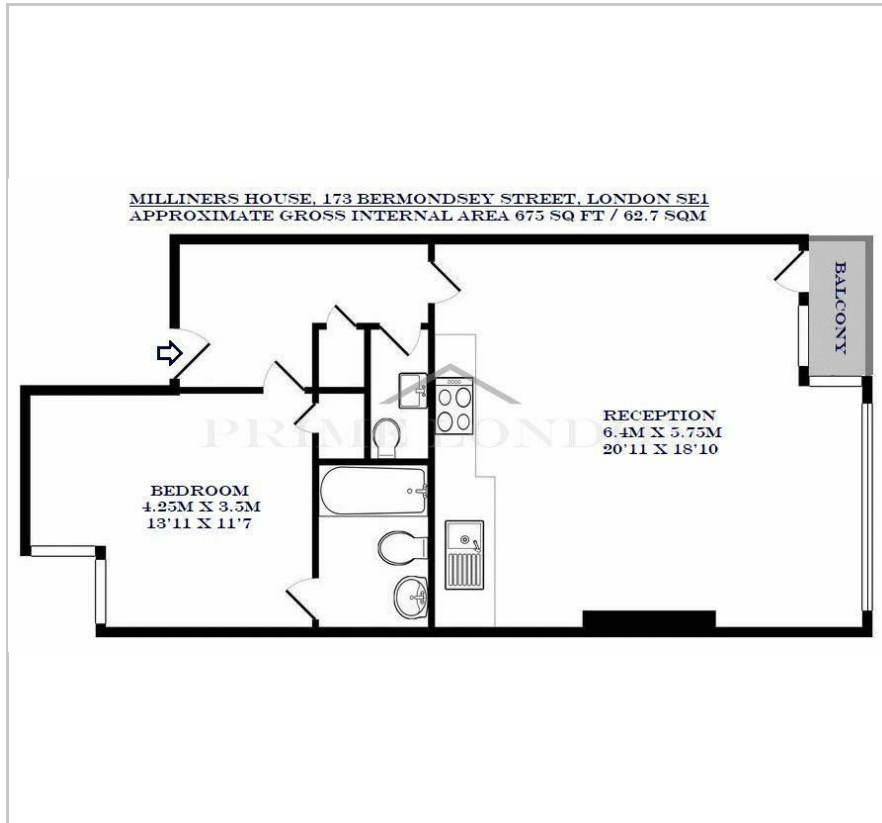
Milliners House

173 Bermondsey Street, London Bridge, SE1 3UW

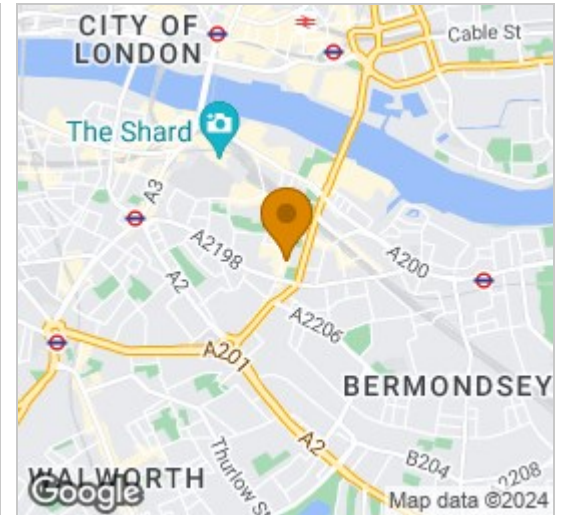
£550 Per Week



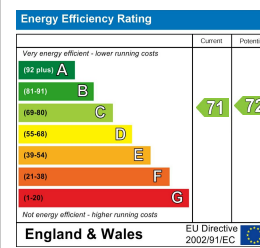
## Floor Plan



## Area Map



## Energy Efficiency Graph



## Viewing

By appointment. Contact us on 0207 928 6663 if you wish to arrange a viewing appointment for this property, or require further information.

- Exceptionally spacious
- Stylish, boutique conversion
- Unique village lifestyle
- 675 sq ft (62.7 sqm)
- Bars, cafés and award winning eateries
- Close to London Bridge

An exceptionally spacious top floor apartment of 675 sq ft (62.7 sqm), within a warehouse conversion on the fashionable Bermondsey Street, available for lease exclusively through Prime London.

Milliners House is a stylish, boutique conversion for those looking to enjoy a unique village lifestyle within Central London.

This fantastic location offers an array of bars, cafés and award winning eateries as well as boutique shops and other artisan businesses on the doorstep.

The property is a short walk from Borough Market, More London and Bankside, and London Bridge offers transport connections to Canary Wharf, The City, and the West End



These particulars, whilst believed to be accurate are set out as a general outline only for guidance and do not constitute any part of an offer or contract. Intending purchasers should not rely on them as statements of representation of fact, but must satisfy themselves by inspection or otherwise as to their accuracy. No person in this firm's employment has the authority to make or give any representation or warranty in respect of the property.