



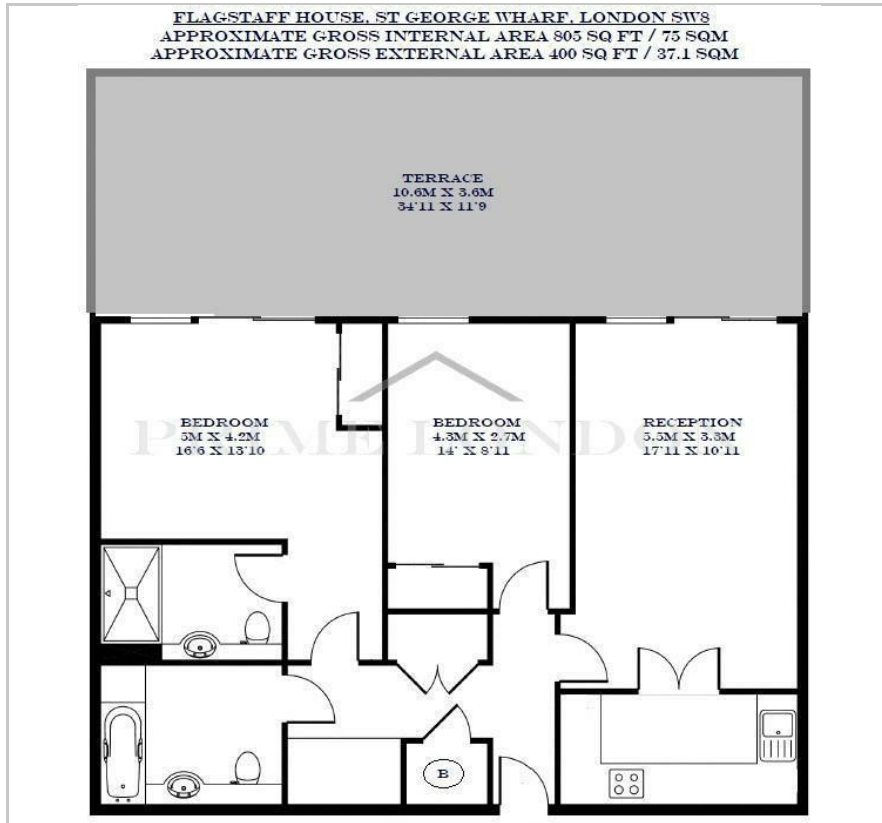
Flagstaff House

St George Wharf, SW8 2LZ

£715 Per Week



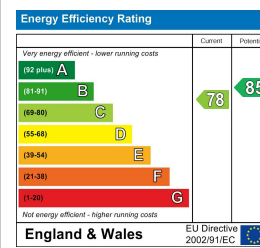
Floor Plan



Area Map



Energy Efficiency Graph



Viewing

By appointment. Contact us on 0207 928 6663 if you wish to arrange a viewing appointment for this property, or require further information.

- West-facing
- 400 sq ft terrace
- Over 800 sq ft of internal
- Furnished to a high standard space

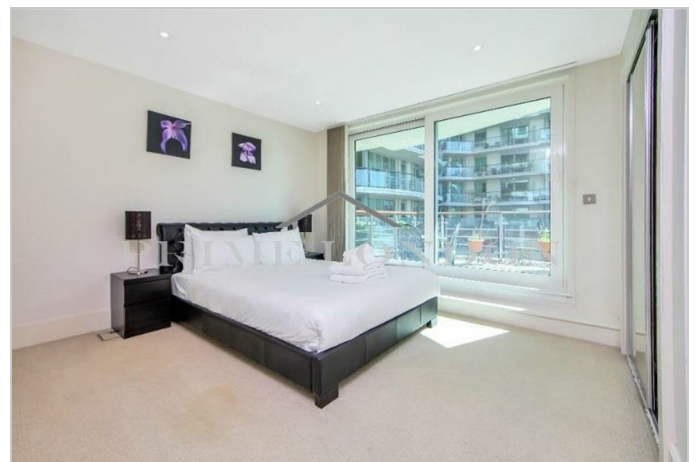


A west-facing two bedroom apartment, with huge 400 sq ft terrace, available for lease in St. George Wharf through Prime London.

The property, which offers over 800 sq ft of internal space in addition to the 400 sq ft terrace, is excellently proportioned and furnished to a high standard.

This apartment benefits from the fantastic transport links afforded by this very well kept complex by The River Thames.

St George Wharf offers on site riverside bars and restaurants such as Waterfront London, The Riverside, Four Degree and Pop Art Sushi as well as direct access to Vauxhall Underground Station on the Victoria Line. For additional convenience other on site outlets include Tesco Express, Pret a Manger, Hudson's Dry Cleaners, Riverside Medical Centre & Dental Spa and more.



These particulars, whilst believed to be accurate are set out as a general outline only for guidance and do not constitute any part of an offer or contract. Intending purchasers should not rely on them as statements of representation of fact, but must satisfy themselves by inspection or otherwise as to their accuracy. No person in this firm's employment has the authority to make or give any representation or warranty in respect of the property.