

One Blackfriars

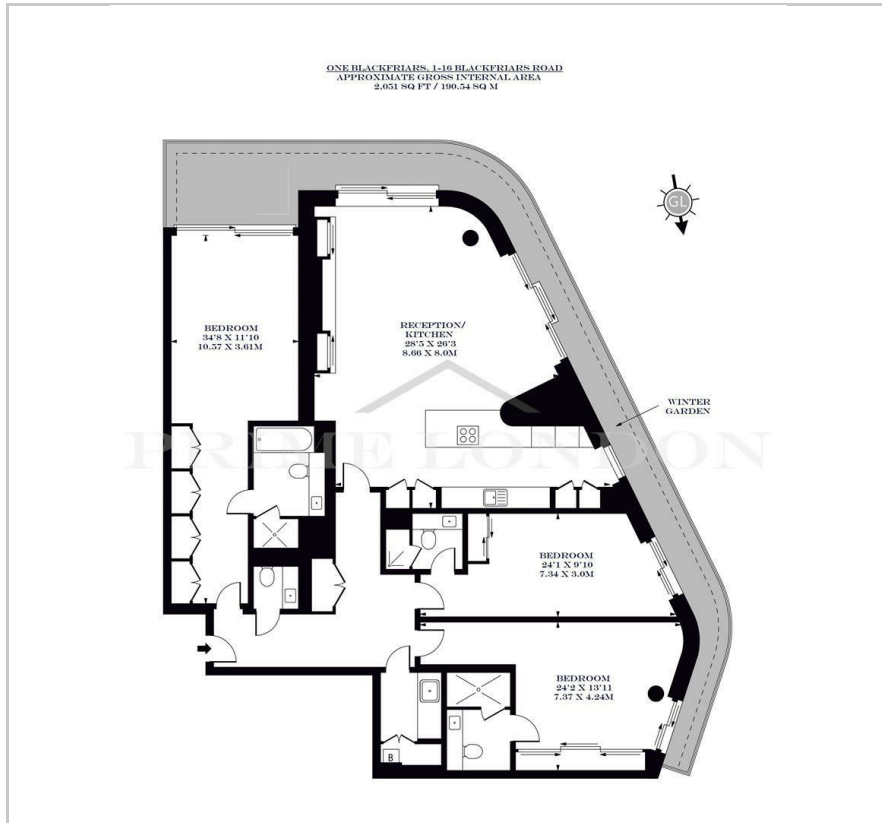
1-16 Blackfriars Road, SE1 9GQ

£2,653 Per Week



B

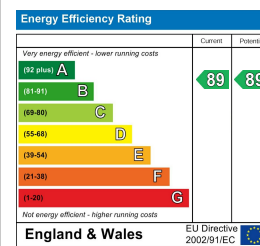
Floor Plan



Area Map



Energy Efficiency Graph



Viewing

By appointment. Contact us on 0207 928 6663 if you wish to arrange a viewing appointment for this property, or require further information.

- Elite style three bedroom ▪ 2,051 sq ft / 190.54 sq m apartment
- Views of the River Thames, London Eye, and Houses of Parliament ▪ Residents' gym, swimming pool, thermal suite
- 32nd floor executive residents' lounge area and wine cellars ▪ 24 hour concierge

This elite three bedroom apartment, comprising 2,051 sq ft (190.54 sqm) of internal space and positioned near the top of the stunning One Blackfriars development, comes exceptionally interior designed and fully furnished throughout, and is available exclusively through Prime London.

With far reaching views of the River Thames, London Eye, and Houses of Parliament this exceptional premium apartment offers marble flooring, floor to ceiling windows, iPad control of state of the art automation and entertainment systems, stone and marble bathrooms and huge wrap around winter garden.

The apartment also benefits from use of the residents' gym, swimming pool, thermal suite, golf simulator, screening room, 32nd floor executive residents' lounge area and wine cellars.



These particulars, whilst believed to be accurate are set out as a general outline only for guidance and do not constitute any part of an offer or contract. Intending purchasers should not rely on them as statements of representation of fact, but must satisfy themselves by inspection or otherwise as to their accuracy. No person in this firm's employment has the authority to make or give any representation or warranty in respect of the property.