



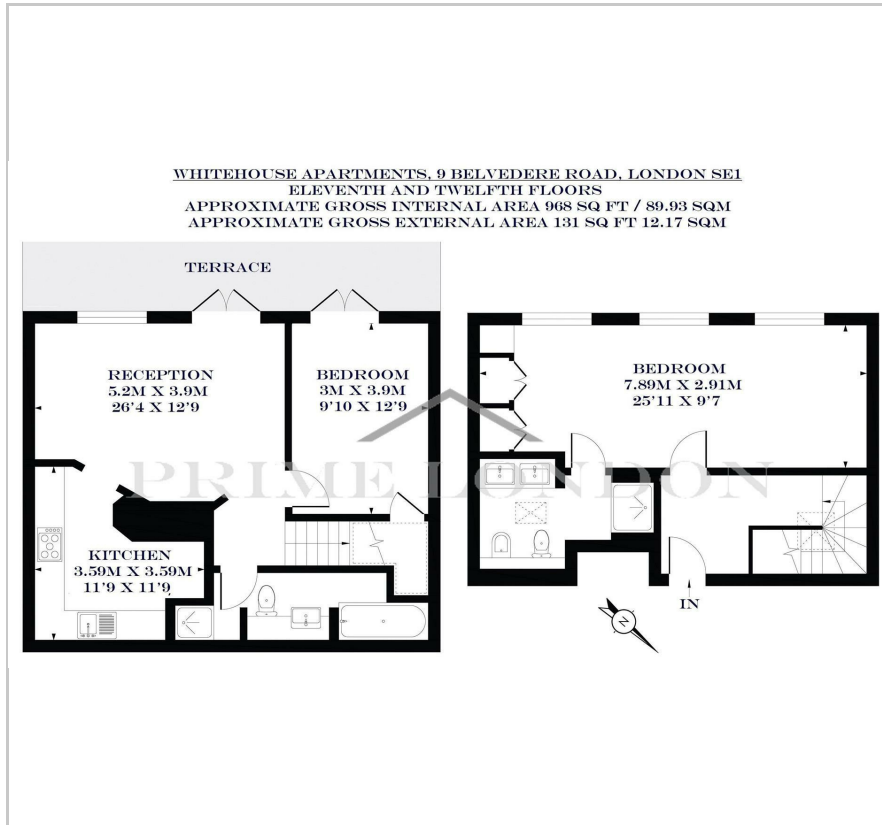
Whitehouse Apartments

9 Belvedere Road, South Bank, SE1 8YW

£1,000 Per Week

-  2
-  2
-  1
-  D

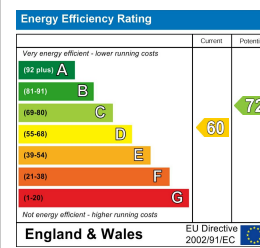
Floor Plan



Area Map



Energy Efficiency Graph



Viewing

By appointment. Contact us on 0207 928 6663 if you wish to arrange a viewing appointment for this property, or require further information.

- The finest position in the building
- Secure allocated parking
- Superior on-site facilities
- Exquisite aspect
- Comfort cooling
- Gymnasium and indoor heated swimming pool

Offering the finest position in the building and an exquisite aspect, this refurbished penthouse apartment is available for lease for the first time in its history through Prime London, within this iconic development on London's South Bank.

The property is arranged over two floors and offers its premium aspect from all principal rooms. The property also offers a private terrace, comfort cooling and secure allocated parking.

Residents of the Whitehouse Apartments enjoy exclusive use of the superior on-site facilities, namely a well maintained courtyard garden, gymnasium, indoor heated swimming pool, spa and expansive rooftop terrace.

Within walking distance of the South Bank's many amenities as well as Waterloo and Westminster stations, the location provides direct transport links into the City and West End.



These particulars, whilst believed to be accurate are set out as a general outline only for guidance and do not constitute any part of an offer or contract. Intending purchasers should not rely on them as statements of representation of fact, but must satisfy themselves by inspection or otherwise as to their accuracy. No person in this firm's employment has the authority to make or give any representation or warranty in respect of the property.