

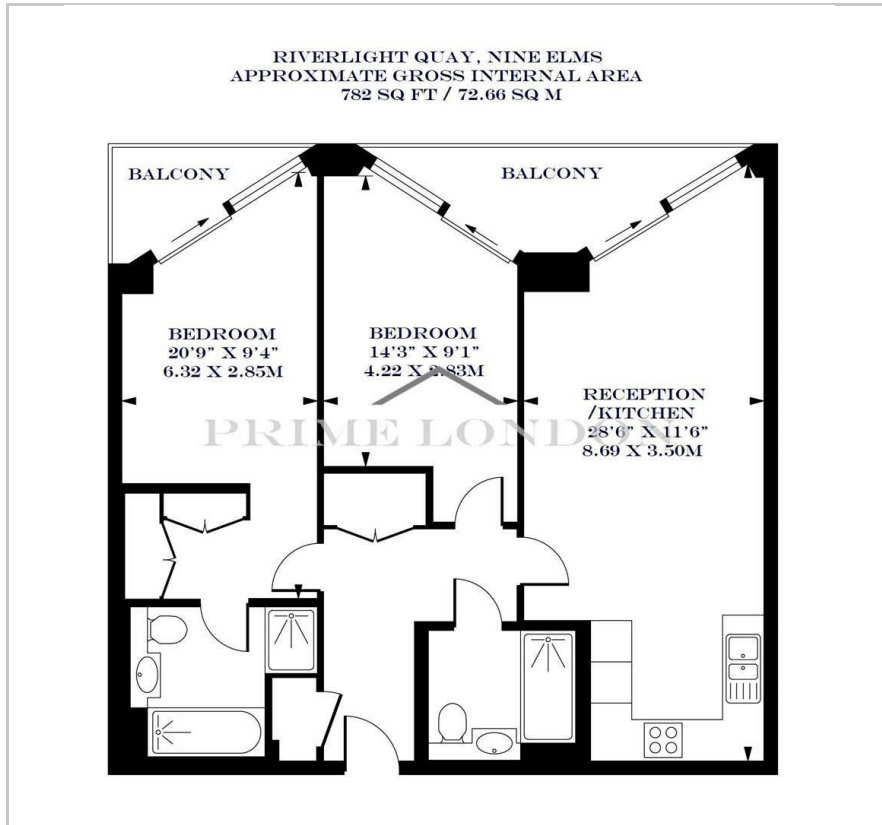
# Three Riverlight Quay

Nine Elms, SW8 5BF

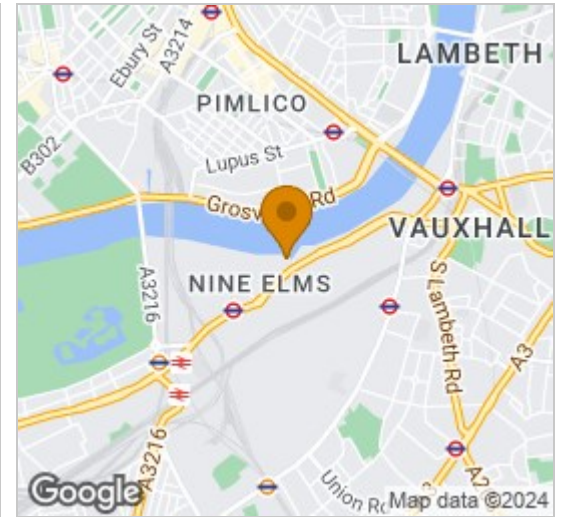
£795 Per Week



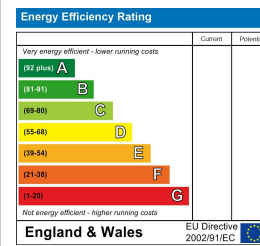
## Floor Plan



## Area Map



## Energy Efficiency Graph



## Viewing

By appointment. Contact us on 0207 928 6663 if you wish to arrange a viewing appointment for this property, or require further information.

- Two bedroom two bathroom
- 782 sq ft (72.66 sq m)
- Secure parking space
- Fully furnished
- Resident's pool, gym and leisure facilities
- 24 hour concierge

A modern river facing two bedroom apartment with excellent on site facilities and high quality furnishings, available for lease within the Riverlight development through Prime London. The property also comes with a secure parking space. This 782 sq ft (72.66 sq m) apartment offers a bright and modern living space, two balconies and en suite to master, with high specification level throughout, comfort cooling and under floor heating. An exclusive on-site residents Clubhouse offers a unique third space between home and work which to socialise, exercise and be entertained, from a private screening room to virtual golf facilities; a residents club lounge and library and a 15m swimming pool, state-of-the-art gymnasium and spa. Riverlight offers a wide range of accommodation with a vibrant mix of leisure and retail facilities at street level, including cafés, bar and restaurant and a crèche.



These particulars, whilst believed to be accurate are set out as a general outline only for guidance and do not constitute any part of an offer or contract. Intending purchasers should not rely on them as statements of representation of fact, but must satisfy themselves by inspection or otherwise as to their accuracy. No person in this firm's employment has the authority to make or give any representation or warranty in respect of the property.