



Nine Albert Embankment

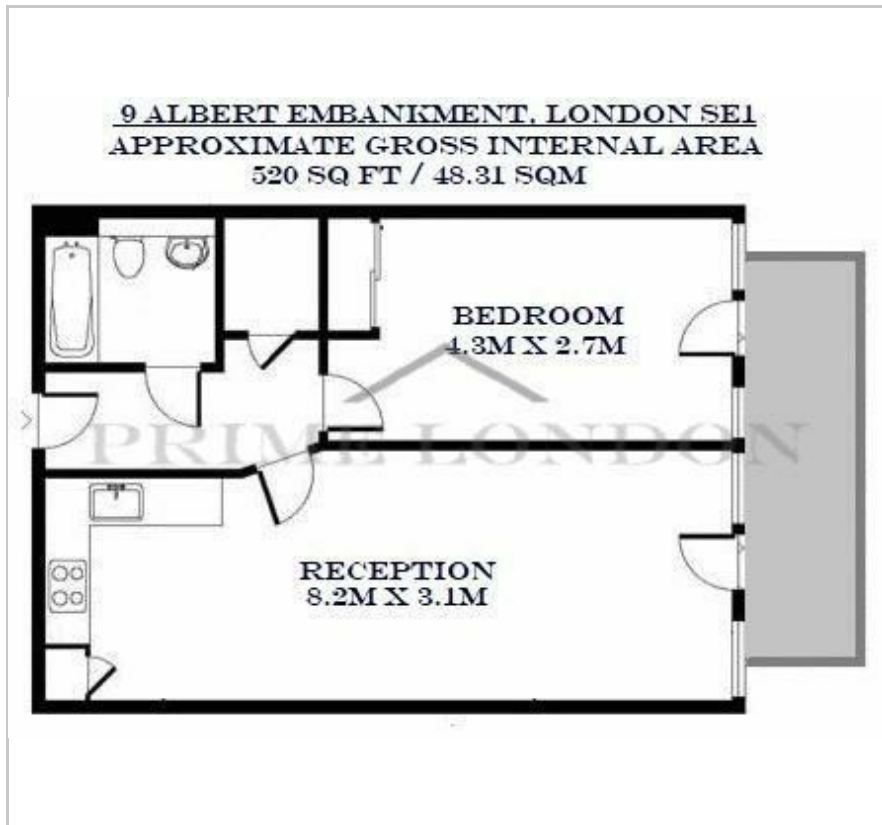
South Bank, SE1 7HG

£507 Per Week

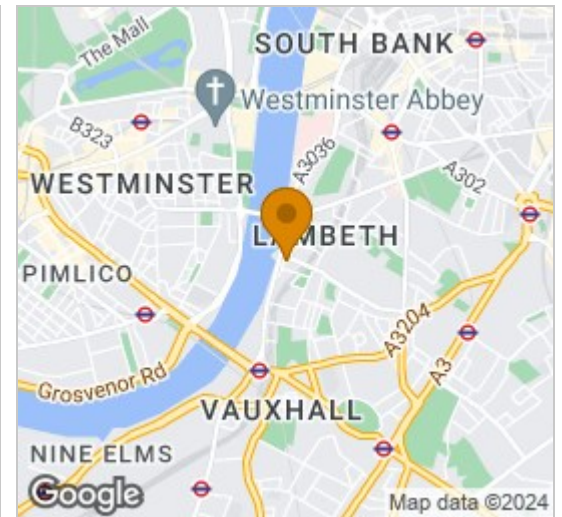


-  1
-  1
-  1
-  C

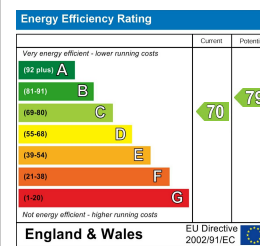
Floor Plan



Area Map



Energy Efficiency Graph



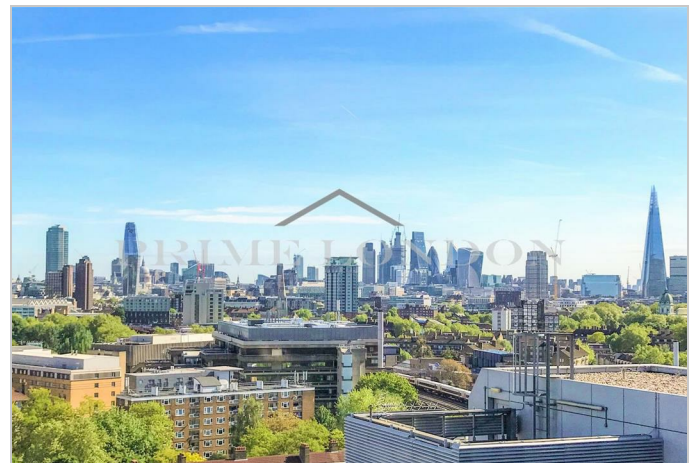
Viewing

By appointment. Contact us on 0207 928 6663 if you wish to arrange a viewing appointment for this property, or require further information.

- Exceptional view of Parliament, the River Thames, London Eye and City
- 520 sq ft
- Top floor
- 24 hour concierge and on-site convenience store

On the top floor and with an exceptional view of Parliament, the River Thames, London Eye and City beyond, this generous one bedroom apartment of 520 sq ft is available for lease through Prime London.

Nine Albert Embankment offers a 24 hour concierge and on-site convenience store, and is within close proximity of Westminster and the South Bank, offering a great selection of shops, bars and restaurants.



These particulars, whilst believed to be accurate are set out as a general outline only for guidance and do not constitute any part of an offer or contract. Intending purchasers should not rely on them as statements of representation of fact, but must satisfy themselves by inspection or otherwise as to their accuracy. No person in this firm's employment has the authority to make or give any representation or warranty in respect of the property.