



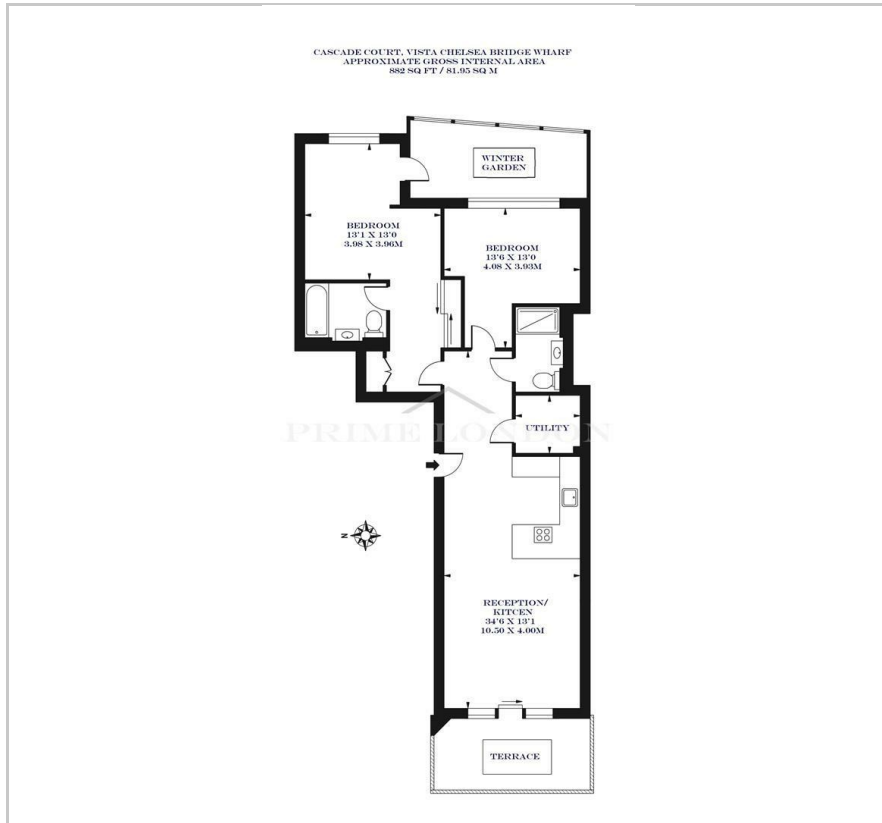
Camellia House

Queenstown Road, Battersea Park, SW11 8NZ

Asking Price £1,100,000



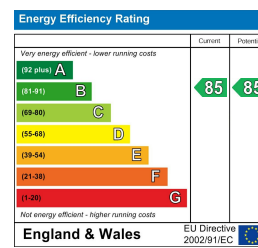
Floor Plan



Area Map



Energy Efficiency Graph



Viewing

Please contact our on 0207 928 6663 if you wish to arrange a viewing appointment for this property or require further information.

- Views onto Battersea Park
- Private terrace and winter garden
- Front to back style
- Residents' leisure facilities
- 1,094 sq ft / 101.7 sq m
- 24 hour concierge (including winter garden)

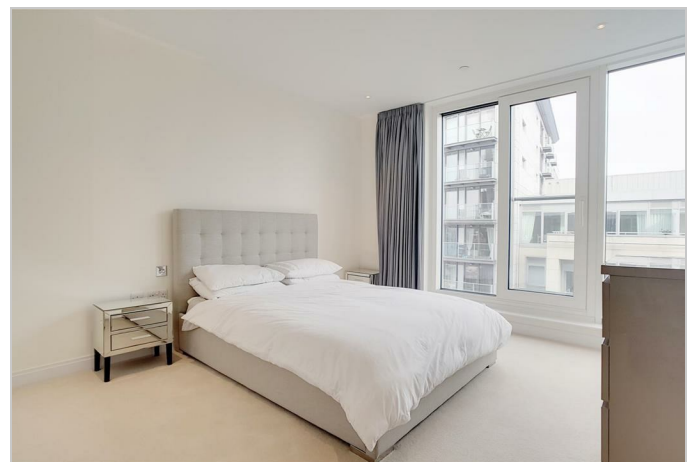


This modern and spacious two bedroom apartment of 1,089 sq ft / 101.7 sq m (including winter garden), with views of Battersea Park, two private balcony and winter garden, is available for chain free sale through Prime London. Note that the property is tenanted until January 2025.

Camellia House at Vista Chelsea Bridge Wharf is a contemporary development (with residents' leisure facilities and 24 concierge) overlooking Battersea Park, offering bright apartments with magnificent large windows and superb finishes, quality engineered timber flooring, kitchens with subtle satin finishes and beautiful stone work surfaces, high specification bathrooms and bedrooms with a fusion of subtle lighting, muted tones and soft carpeting.

The innovative and striking architecture has been conceived by world-leading architects Scott Brownrigg, to incorporate extensive outdoor landscaping and feature terraces whilst fitting into the beautiful surroundings of Battersea Park.

Images and location plan are for illustrative purposes only, and are intended as an approximate guide



These particulars, whilst believed to be accurate are set out as a general outline only for guidance and do not constitute any part of an offer or contract. Intending purchasers should not rely on them as statements of representation of fact, but must satisfy themselves by inspection or otherwise as to their accuracy. No person in this firm's employment has the authority to make or give any representation or warranty in respect of the property.