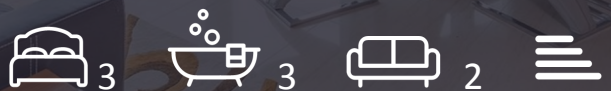




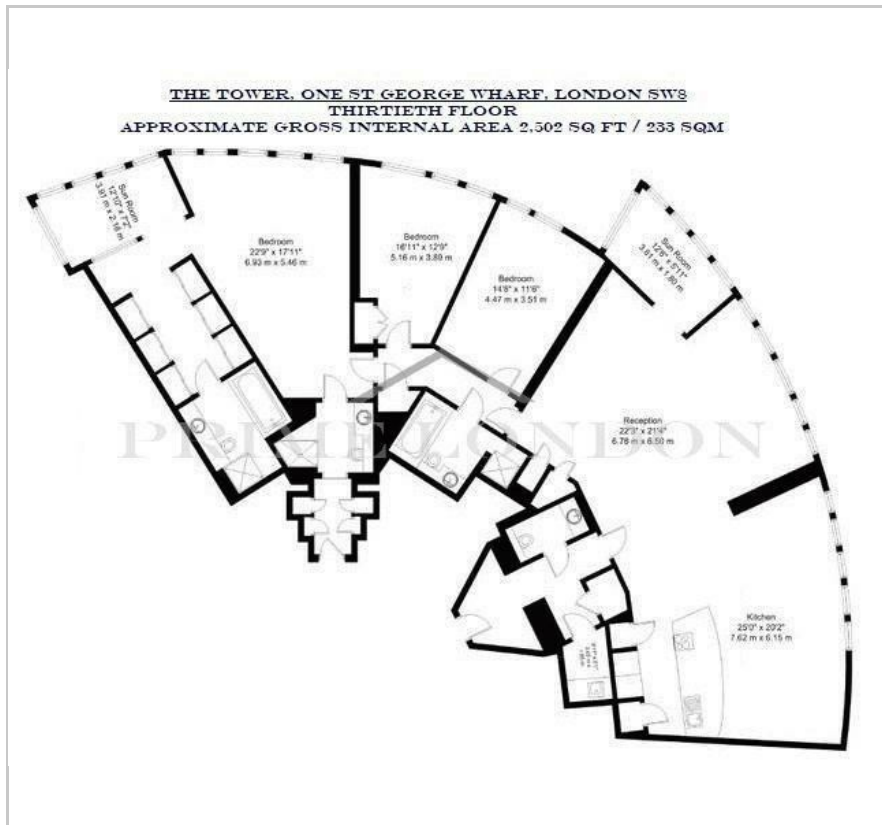
The Tower

One St George Wharf, Vauxhall, SW8 2BW

£3,219 Per Week



Floor Plan



Area Map



Energy Efficiency Graph



Viewing

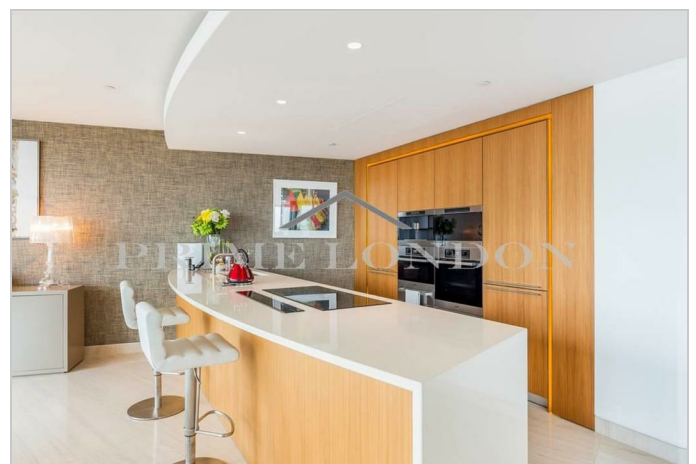
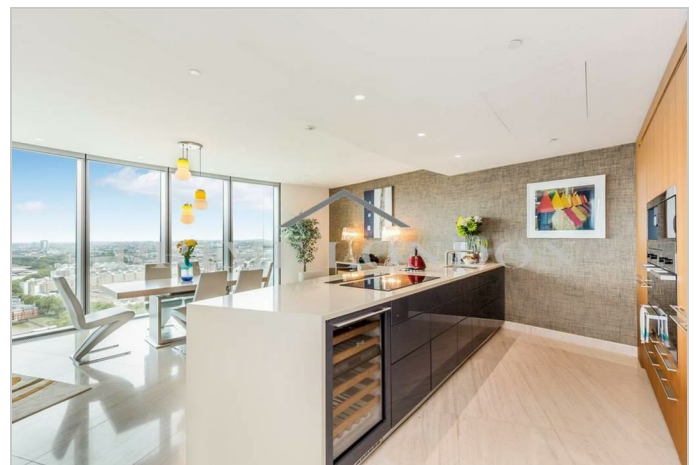
By appointment. Contact us on 0207 928 6663 if you wish to arrange a viewing appointment for this property, or require further information.

- Exceptional three bedroom apartment
- Fully furnished
- Two parking spaces
- Private cinema
- Gym, pool and sauna facilities
- Front door concierge with valet parking

This ultra modern 2,502 sq ft (233 sqm) lateral three bedroom apartment, located in the iconic St George Wharf Tower on the River Thames, comes fully furnished and is available to rent through Prime London.

The property also comes with a secure parking space. This thirtieth floor apartment offers stunning views across London and its features include marble, glass and walnut finishes throughout while the master suite benefits from his and hers vanity areas and a large dressing area.

The apartment boasts its own sky garden balcony, fully comprehensive kitchen with Miele appliances, modern bathrooms and two parking spaces. Amenities include front door concierge with valet parking, first floor gym, pool and sauna facilities as well as a private cinema. The tower's location offers fantastic transport links including Vauxhall underground, train and bus stations within a minutes walk, and only 2 stops to Victoria and 3 to Green Park.



These particulars, whilst believed to be accurate are set out as a general outline only for guidance and do not constitute any part of an offer or contract. Intending purchasers should not rely on them as statements of representation of fact, but must satisfy themselves by inspection or otherwise as to their accuracy. No person in this firm's employment has the authority to make or give any representation or warranty in respect of the property.