



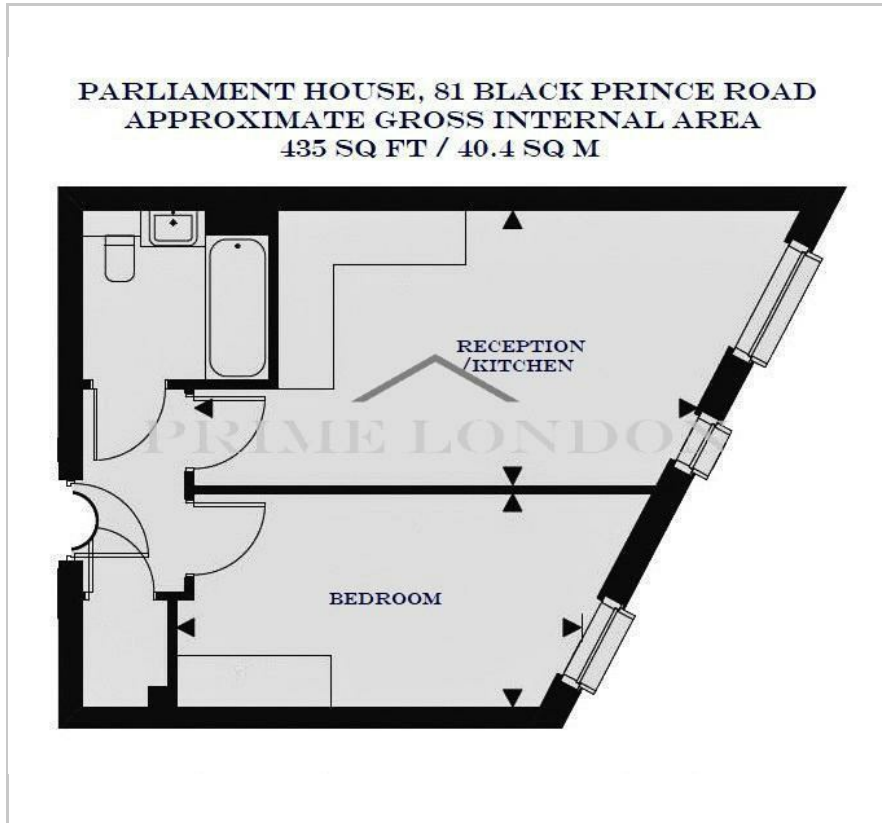
Parliament House

81 Black Prince Road, SE1 7SZ

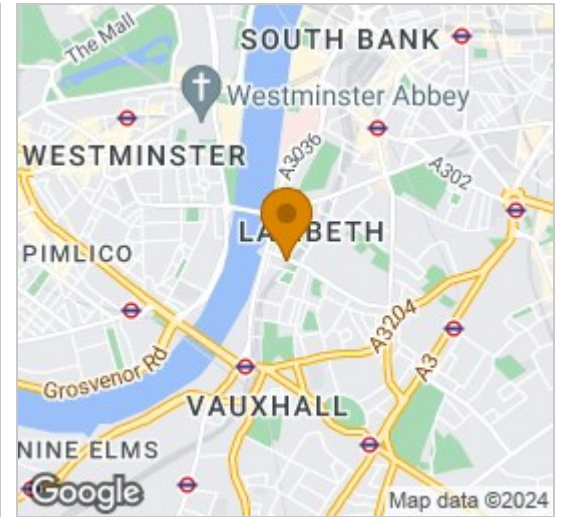
£490 Per Week



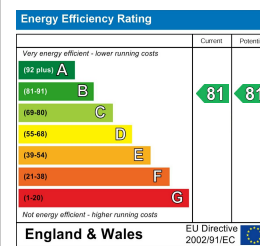
Floor Plan



Area Map



Energy Efficiency Graph



Viewing

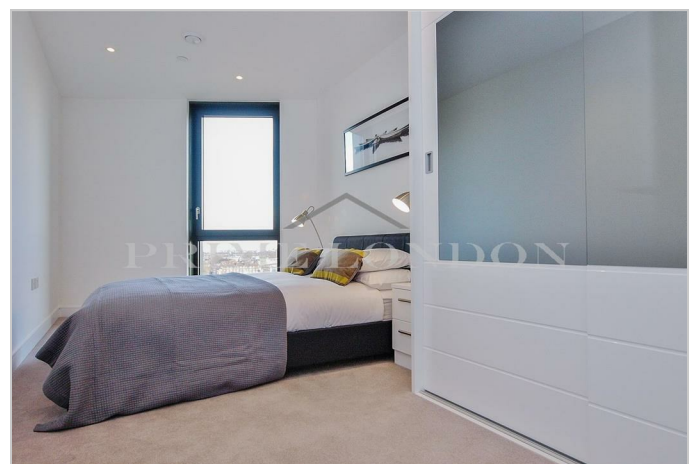
By appointment. Contact us on 0207 928 6663 if you wish to arrange a viewing appointment for this property, or require further information.

- South facing
- Luxurious finishes
- Westminster and Vauxhall Stations within walking distance
- Excellently located development
- Residents' terrace, private gymnasium and a concierge service

A high specification south facing one bedroom apartment in Parliament House, an excellently located development within walking distance of the South Bank and West End.

This property is available for lease exclusively through Prime London.

This development offers luxurious finishes to apartments and communal areas, features a residents' terrace, private gymnasium and a concierge service and has Westminster and Vauxhall Stations within walking distance.



These particulars, whilst believed to be accurate are set out as a general outline only for guidance and do not constitute any part of an offer or contract. Intending purchasers should not rely on them as statements of representation of fact, but must satisfy themselves by inspection or otherwise as to their accuracy. No person in this firm's employment has the authority to make or give any representation or warranty in respect of the property.