



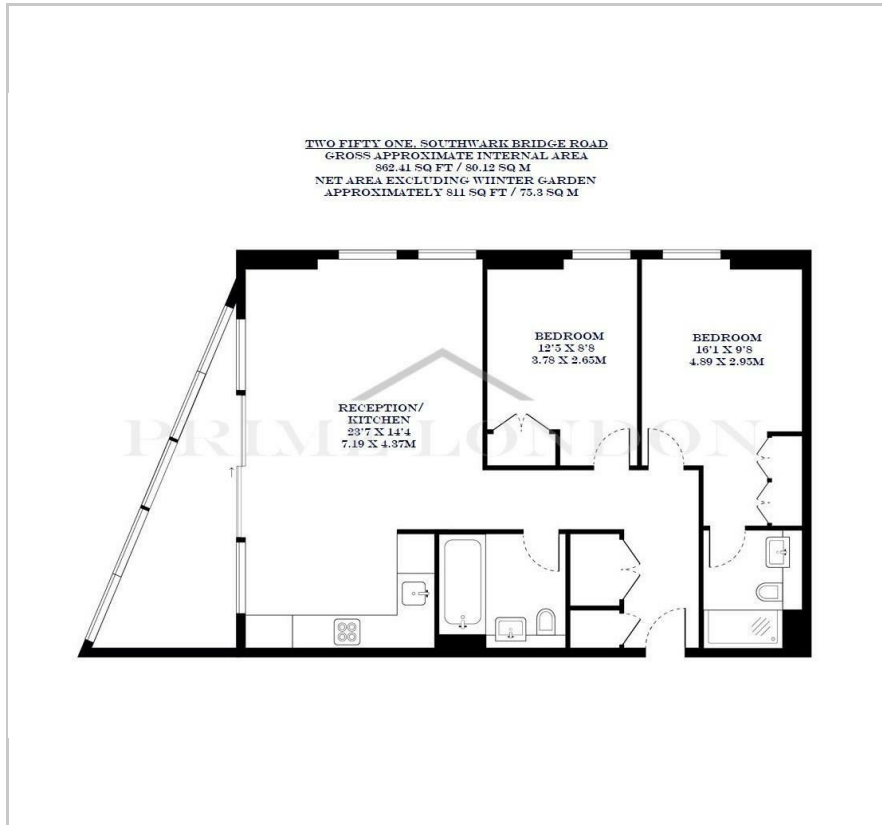
Two Fifty One

Southwark Bridge Road, SE1 6FL

£800 Per Week



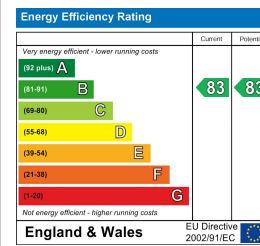
Floor Plan



Area Map



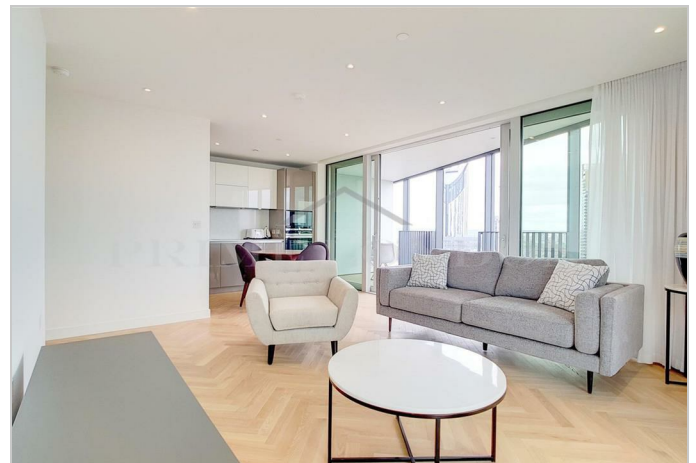
Energy Efficiency Graph



Viewing

By appointment. Contact us on 0207 928 6663 if you wish to arrange a viewing appointment for this property, or require further information.

- Modern two bedroom ▪ 811 sq ft / 75.3 sq m apartment
- Fully furnished
- Cinema and business facilities
- Gymnasium
- 24-hour concierge



With floor to ceiling windows offering spectacular views of the London Eye, this fully furnished larger style two bedroom two bathroom apartment in the highly sought after Two Fifty One development is available to rent through Prime London.

The property further benefits from underfloor heating, lift access and bicycle storage. Apartments at 251 Southwark Bridge Road are created to combine contemporary style, beautiful materials and bespoke finishes, the specifications include; bespoke German engineered kitchens fitted with stone work-surfaces, premium Siemens appliances and high-gloss units; beautiful bathroom suites finished with Italian marble flooring; and contemporary bedrooms with fitted wardrobes and wool carpeting.

Two Fifty One is situated in the heart of Southwark, offering charm and character with facilities including 24-hour concierge, private gymnasium, private cinema and private meeting rooms. Close to Two Fifty One is the South Bank, featuring the National Theatre, Tate Modern, White Cube Gallery and Shad Thames. Borough Market, a centre for gourmet food and fine restaurants, is also within walking distance.



These particulars, whilst believed to be accurate are set out as a general outline only for guidance and do not constitute any part of an offer or contract. Intending purchasers should not rely on them as statements of representation of fact, but must satisfy themselves by inspection or otherwise as to their accuracy. No person in this firm's employment has the authority to make or give any representation or warranty in respect of the property.