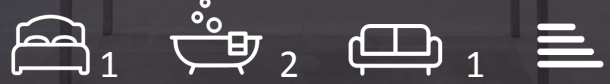




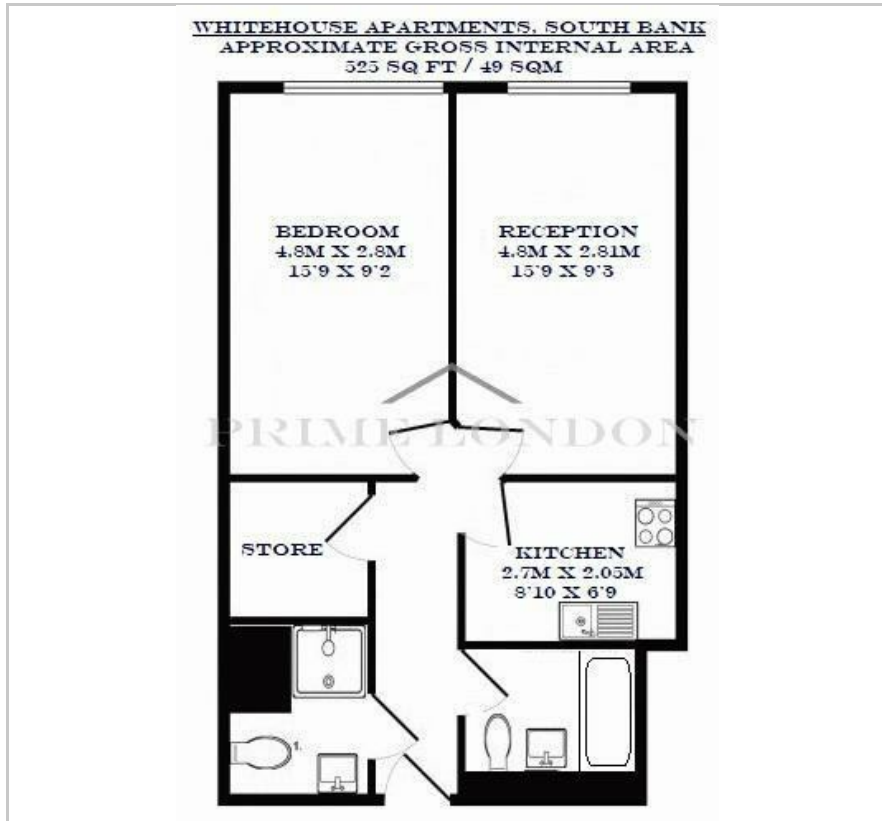
Whitehouse Apartments

9 Belvedere Road, South Bank, SE1 8YT

Asking Price £550,000



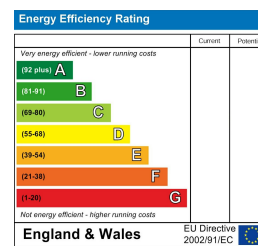
Floor Plan



Area Map



Energy Efficiency Graph



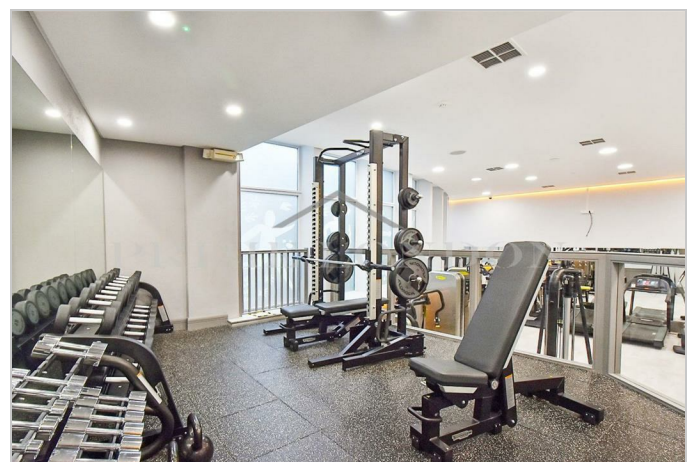
Viewing

Please contact our on 0207 928 6663 if you wish to arrange a viewing appointment for this property or require further information.

- 525 sq ft
- Chain free
- Heated swimming pool
- Air conditioning
- Spa and fitness centre
- Steam room and sauna



A rare larger style one bedroom apartment of 525 sq ft, with bright southerly aspect and air conditioning, available chain free and exclusively through Prime London within this highly regarded development on the South Bank. The apartment further offers a large double bedroom with built-in storage, fully fitted kitchen, separate shower room, upgraded bathroom and separate storage cupboard. Additionally, residents enjoy exclusive access to the spa and fitness centre complete with fully equipped gymnasium, heated swimming pool, steam room and sauna. Whitehouse Apartments further feature a 24 hour concierge service and communal roof terrace. Positioned moments from the South Bank, the location offers an array of some of London's finest cultural attractions, restaurants, cafes and shops. Nearby Waterloo station provides superb transport links via the Bakerloo, Jubilee, Northern and Waterloo & City lines.



These particulars, whilst believed to be accurate are set out as a general outline only for guidance and do not constitute any part of an offer or contract. Intending purchasers should not rely on them as statements of representation of fact, but must satisfy themselves by inspection or otherwise as to their accuracy. No person in this firm's employment has the authority to make or give any representation or warranty in respect of the property.