



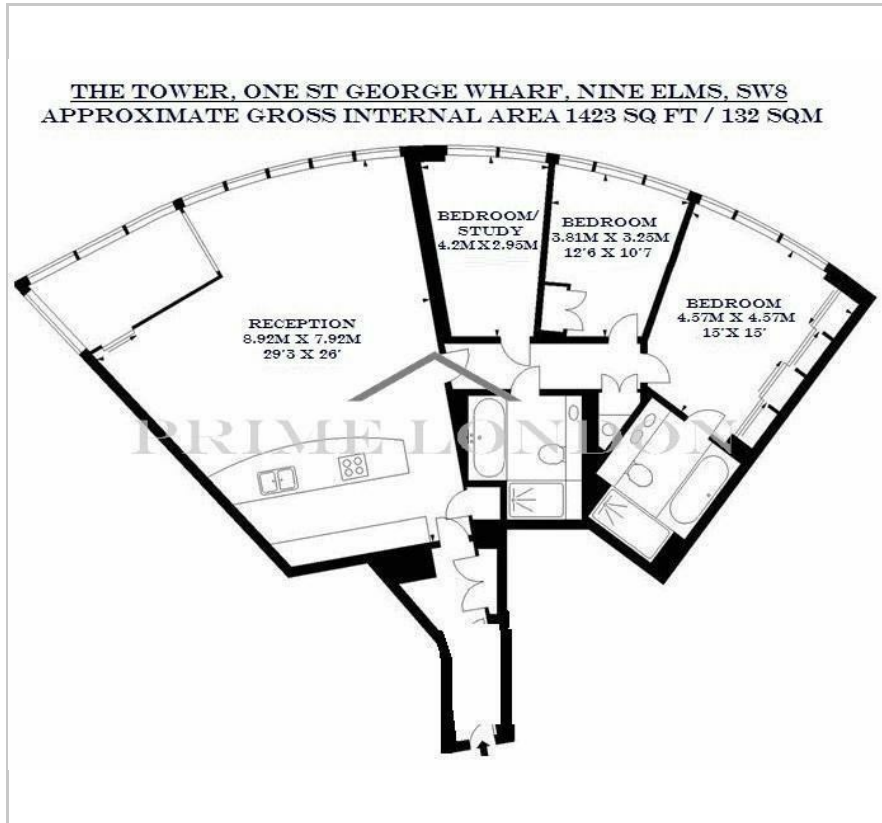
The Tower

One St George Wharf, SW8 2DU

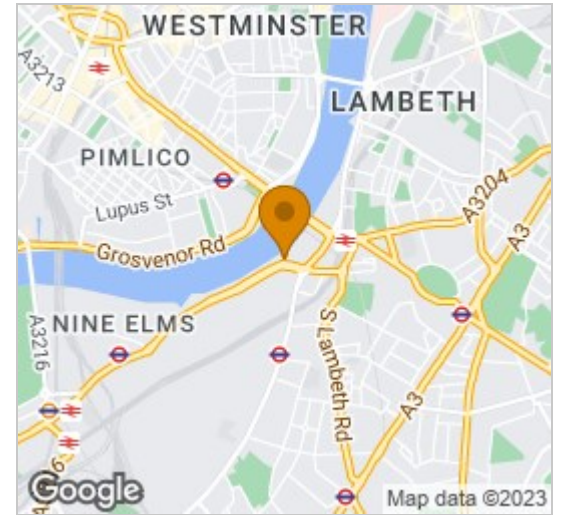
Asking Price £2,600,000



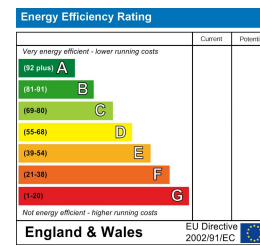
Floor Plan



Area Map



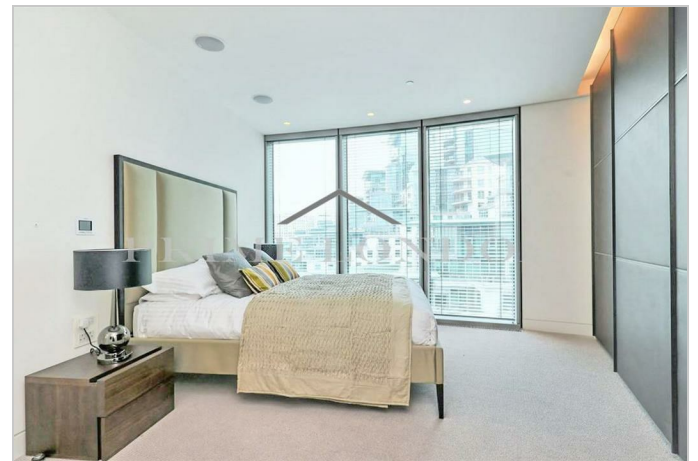
Energy Efficiency Graph



Viewing

Please contact our on 0207 928 6663 if you wish to arrange a viewing appointment for this property or require further information.

- Exquisitely positioned
- Chain free
- Valet parking service
- Wellness centre
- 1,423 sq ft (132 sqm)
- Directly on the river
- Business facilities
- Full concierge service



An exquisitely positioned apartment, directly over the river and with views to Westminster, totalling 1,423 sq ft (132 sqm), available for chain free sale at The Tower, One St George Wharf through Prime London.

The apartment offers a fully integrated kitchen with Miele appliances, high specification bathrooms with exquisite tiling and fittings, comfort cooling, touch panel controls, recessed lighting and automated winter garden.

This exclusive development offers a valet parking service, and also a dedicated door service, 24 hour concierge, private health club with gym, infinity hydro pool, sauna and steam room, business facilities including a boardroom with conference facility, a business lounge and a private screening room and landscaped exterior gardens.



These particulars, whilst believed to be accurate are set out as a general outline only for guidance and do not constitute any part of an offer or contract. Intending purchasers should not rely on them as statements of representation of fact, but must satisfy themselves by inspection or otherwise as to their accuracy. No person in this firm's employment has the authority to make or give any representation or warranty in respect of the property.