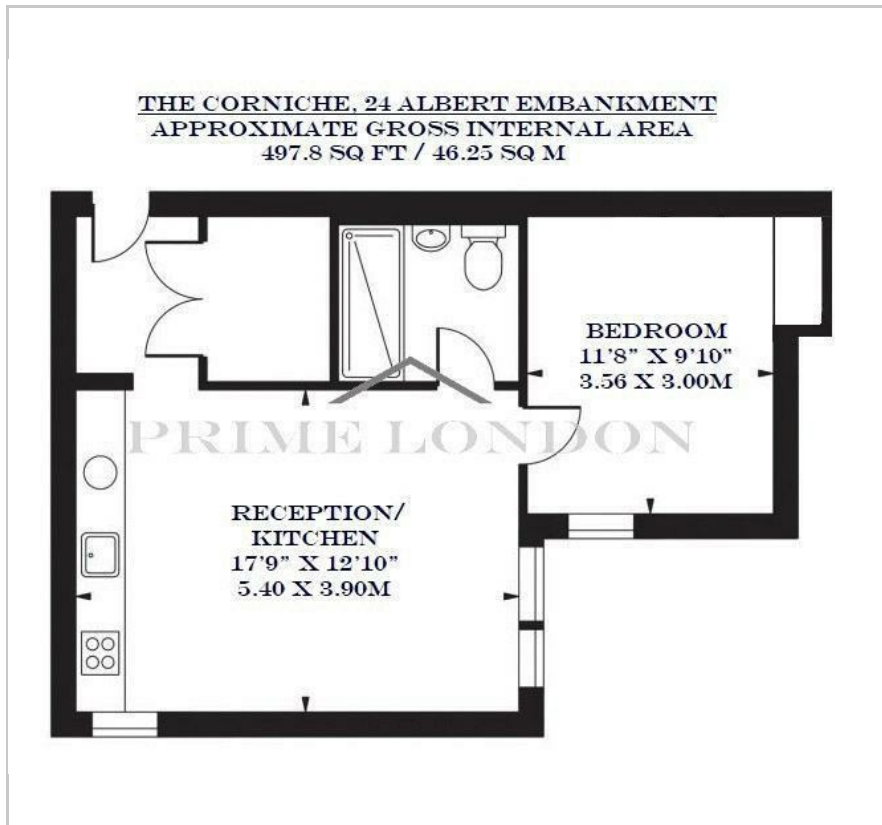


The Corniche

24 Albert Embankment, SE1 7GJ

Asking Price £700,000

## Floor Plan



## Area Map



## Energy Efficiency Graph



## Viewing

By appointment. Contact us on 0207 928 6663 if you wish to arrange a viewing appointment for this property, or require further information.

- Highest river-facing one bedroom apartment
- Beautiful and luxurious development
- High-end details and excellent finishes
- Gym, spa, pool and cinema
- Residents' club and bar with roof terrace
- 24 hour concierge



This high specification one bedroom apartment with river views, exquisite details, and excellent finishes, set in the excellently located and highly sought after development The Corniche, is available for chain free sale through Prime London. The 497 sq ft / 46.25 sq m property comprises a modern open plan reception and kitchen with large window offering views of the River Thames, a spacious double bedroom with ample storage, separate family bathroom, and plenty of further storage in the hall. The development includes extensive residents facilities including a gym, spa, swimming pool, cinema and bowling alley as well as a residents' club and bar with stunning roof terrace overlooking Big Ben and the Houses of Parliament. Located in a prime position on the bank of the River Thames, The Corniche (designed by Foster & Partners) captures some of London's most exquisite views, not only of the Houses of Parliament and the River Thames, but also the Tate Britain, London Eye and the City.



These particulars, whilst believed to be accurate are set out as a general outline only for guidance and do not constitute any part of an offer or contract. Intending purchasers should not rely on them as statements of representation of fact, but must satisfy themselves by inspection or otherwise as to their accuracy. No person in this firm's employment has the authority to make or give any representation or warranty in respect of the property.