



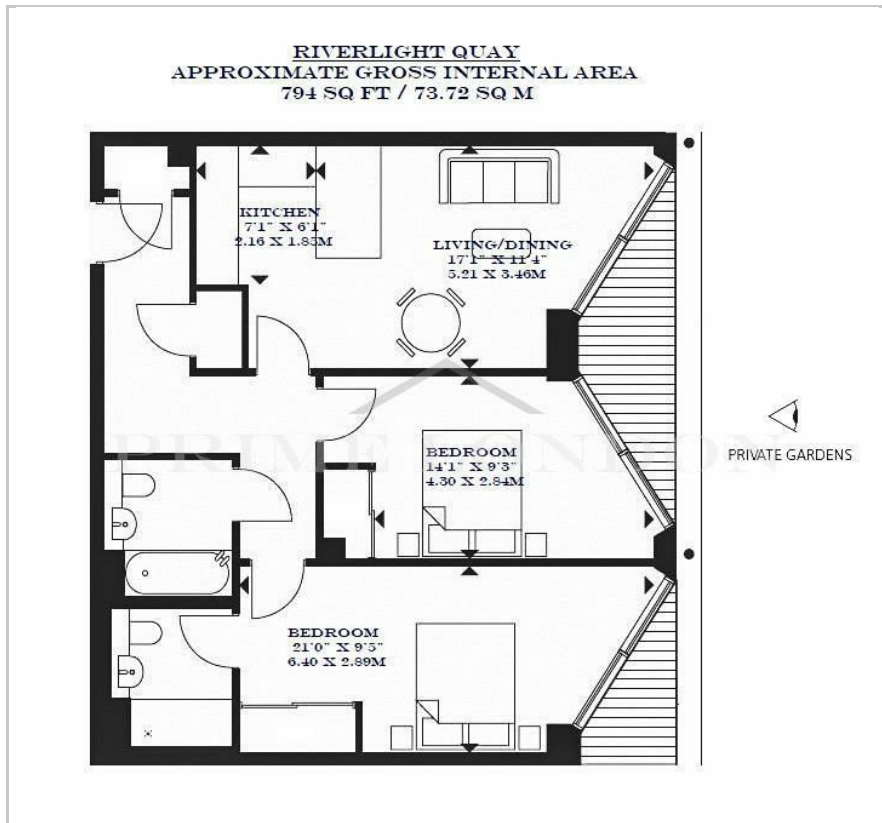
Four Riverlight Quay

Nine elms, SW11 8DG

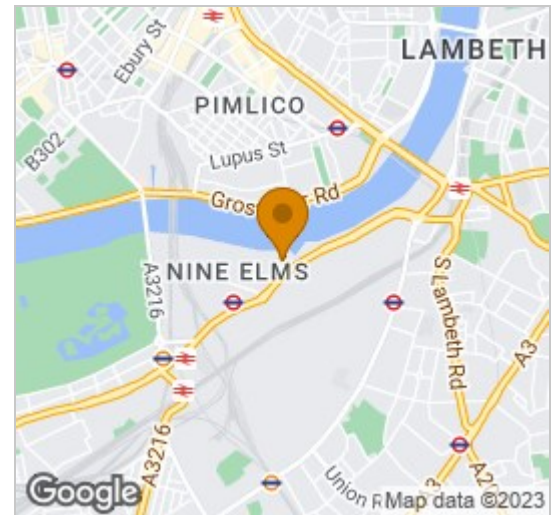
Asking Price £935,000



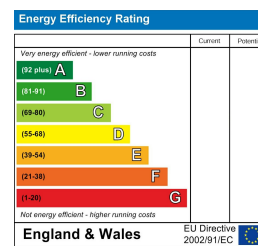
Floor Plan



Area Map



Energy Efficiency Graph



Viewing

Please contact our on 0207 928 6663 if you wish to arrange a viewing appointment for this property or require further information.

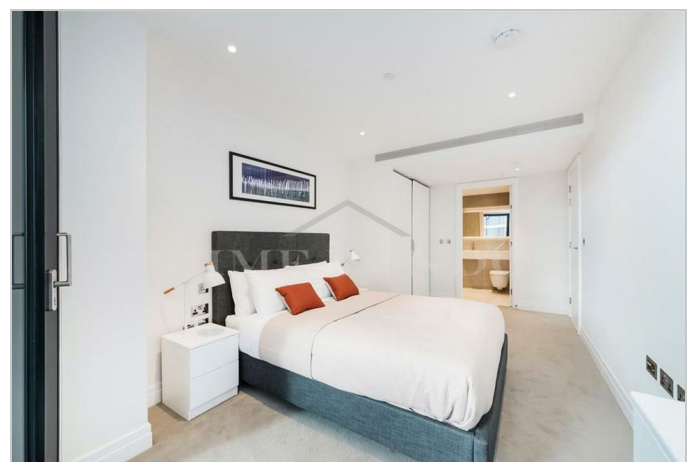
- Two bedroom two bathroom ■ 794 sq ft / 73.72 sq m apartment
- Chain free ■ Comfort cooling and under floor heating
- On-site leisure and resident's ■ 24 hour concierge facilities



This modern two bedroom two bathroom apartment, with two private balconies and set in a fantastic position within the Riverlight development, is available for chain free sale through Prime London Residential.

This apartment offers 794 sq ft / 73.72 sq m of living space, two balconies, en suite and dressing area to primary, high specification level throughout, comfort cooling and under floor heating.

An exclusive residents Clubhouse offers a unique third space between home and work which to socialise, exercise and be entertained, from a private screening room to virtual golf facilities; a residents club lounge and library and a 15m swimming pool, state-of-the-art gymnasium and spa. The property is also positioned very close to the new Nine Elms Northern Line Tube Station, and the shops and attractions of the Battersea Power Station. Created by world-renowned architects Rogers Stirk Harbour & Partners. Riverlight consists of six modern and elegant pavilions that have been specifically designed to maximise the sunlight within and optimise the views out.



These particulars, whilst believed to be accurate are set out as a general outline only for guidance and do not constitute any part of an offer or contract. Intending purchasers should not rely on them as statements of representation of fact, but must satisfy themselves by inspection or otherwise as to their accuracy. No person in this firm's employment has the authority to make or give any representation or warranty in respect of the property.