

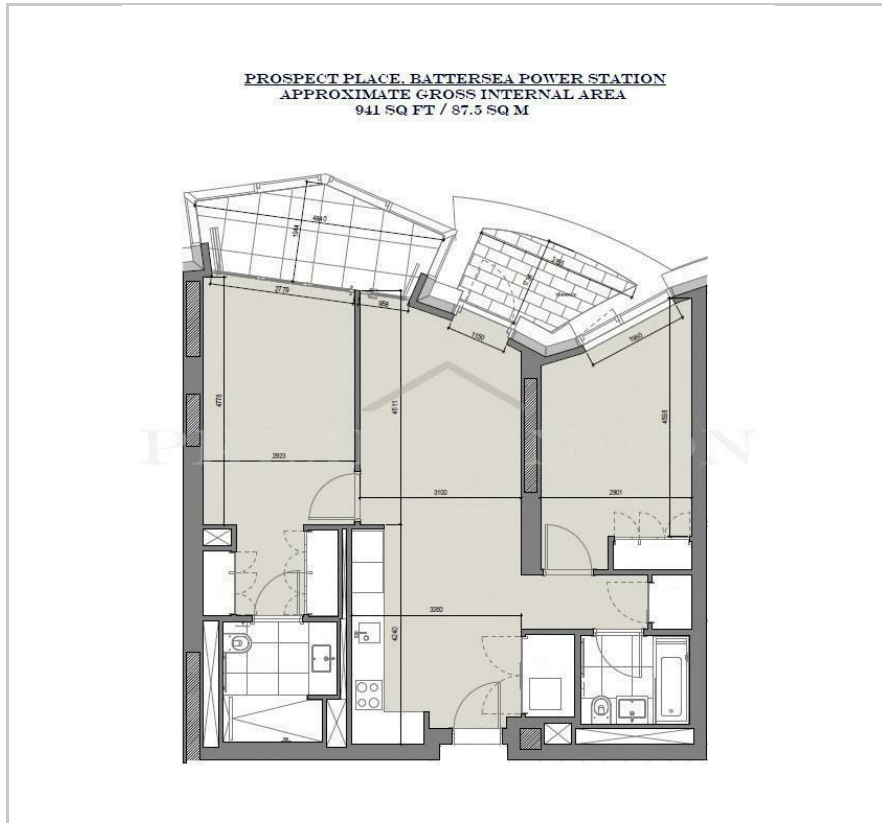


Prospect Place

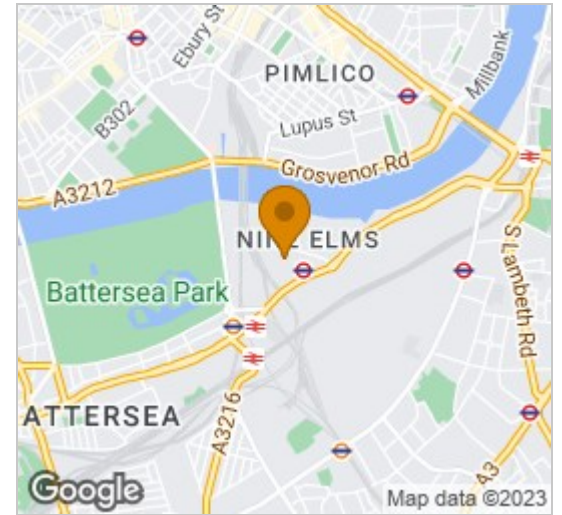
Battersea Power Station, SW11 8BG

Asking Price £1,760,000

Floor Plan



Area Map



Energy Efficiency Graph

Energy Efficiency Rating		Current	Potential
Very energy efficient - lower running costs			
(92 plus)	A		
(81-91)	B		
(69-80)	C		
(55-68)	D		
(39-54)	E		
(21-38)	F		
(1-20)	G		
Not energy efficient - higher running costs			
England & Wales		EU Directive 2002/91/EC	

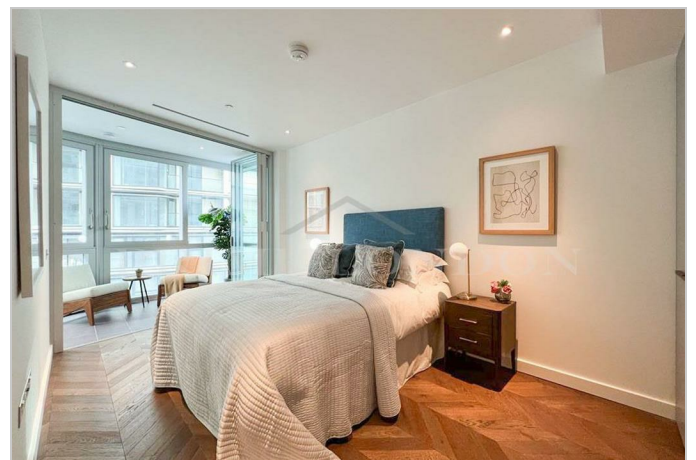
Viewing

Please contact our on 0207 928 6663 if you wish to arrange a viewing appointment for this property or require further information.

- High floor two bedroom apartment ▪ 941 sq ft / 87.5 sq m
- Private balcony and separate winter garden ▪ Brand new
- Residents' cinema, games room, meeting room ▪ Residents' gym, swimming pool and spa
- New Northern Line tube station ▪ 24 hour concierge



This rare style higher floor 941 sq ft / 87.5 sq m two bedroom apartment, with spacious private balcony and separate winter garden, set within the upcoming Prospect Place phase of the highly desirable Battersea Power Station development (next to the River Thames, Battersea Park and new Battersea Power Station Northern Line station), is available for chain free sale through Prime London. Finished to an incredibly high standard throughout, this apartment comprises of open-plan fully equipped and integrated kitchen and reception room leading to a both substantial private balcony and winter garden with eastern views. The property further comprises two well-proportioned double bedrooms with built in wardrobes and dressing area, and two clean and modern bathrooms (one of which is en suite). Designed by acclaimed architects Gehry Partners, residents of Prospect Place will have access to facilities including a first-class 24-hour concierge, on-site gym, a rooftop infinity pool boasting views over Battersea Power Station, spa, cinema, games room, meeting room and a 250-square-meter roof garden designed by New York landscape firm James Corner Field Operations. The Battersea Power Station is a vibrant new destination for London, creating a new community of homes, shops, cafes, offices, leisure, and cultural venues, with over 19 acres of public space. The brand-new Zone 1 Tube station, meanwhile, provides excellent connectivity to the rest of London, with Waterloo (7 minutes), London Bridge (10 minutes), Bank (12 minutes), and King's Cross (20 minutes) all within easy reach. *Images and location plan are for illustrative purposes only, and are intended as an approximate guide*



These particulars, whilst believed to be accurate are set out as a general outline only for guidance and do not constitute any part of an offer or contract. Intending purchasers should not rely on them as statements of representation of fact, but must satisfy themselves by inspection or otherwise as to their accuracy. No person in this firm's employment has the authority to make or give any representation or warranty in respect of the property.