



## Sky Villa

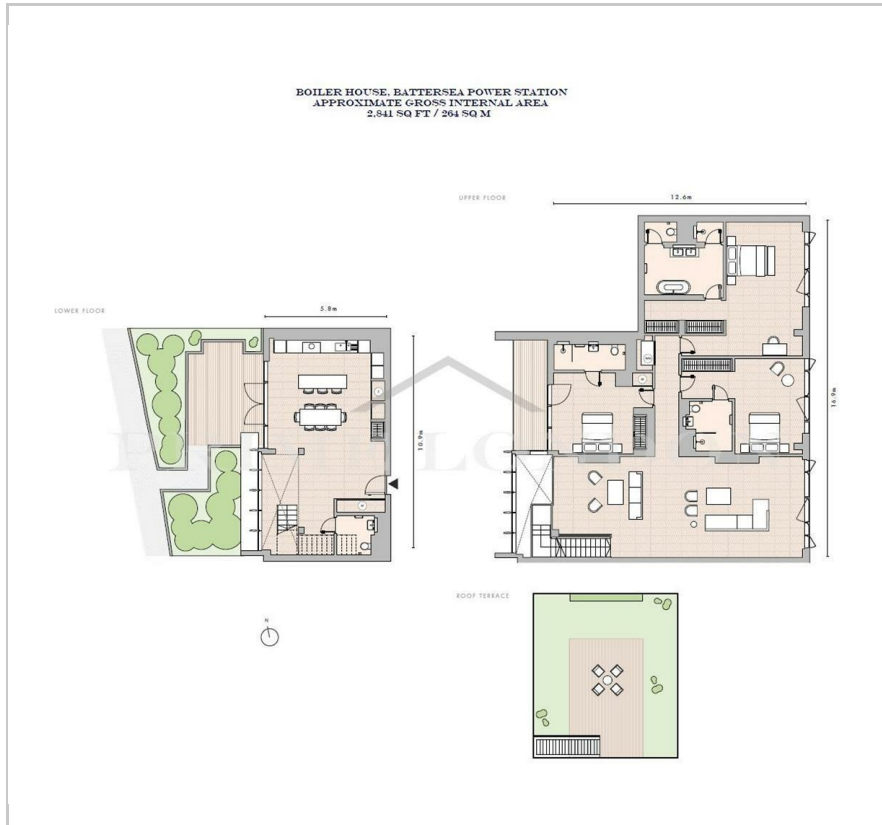
Boiler House, Battersea Power Station, SW11 8EZ

Asking Price £7,500,000

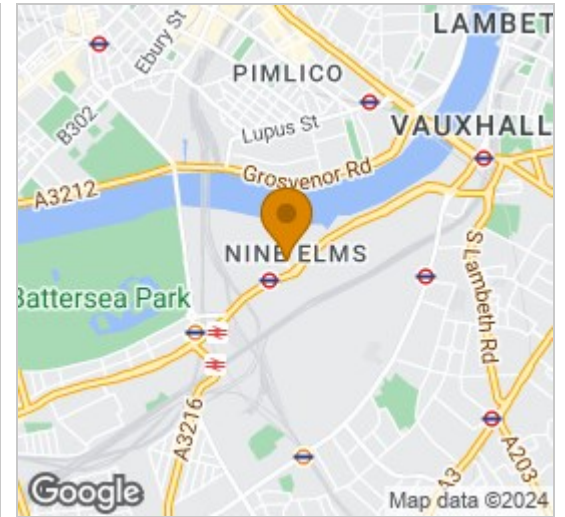




## Floor Plan



## Area Map



## Energy Efficiency Graph



## Viewing

By appointment. Contact us on 0207 928 6663 if you wish to arrange a viewing appointment for this property, or require further information.

- Duplex penthouse apartment
- Two private roof-top gardens
- New underground Northern Line station
- Residents' cinema, games room, meeting room
- Internal area 2,841 sq ft / 264 sq m
- Great far reaching views
- Residents' gym, swimming pool and spa
- 24 hour concierge

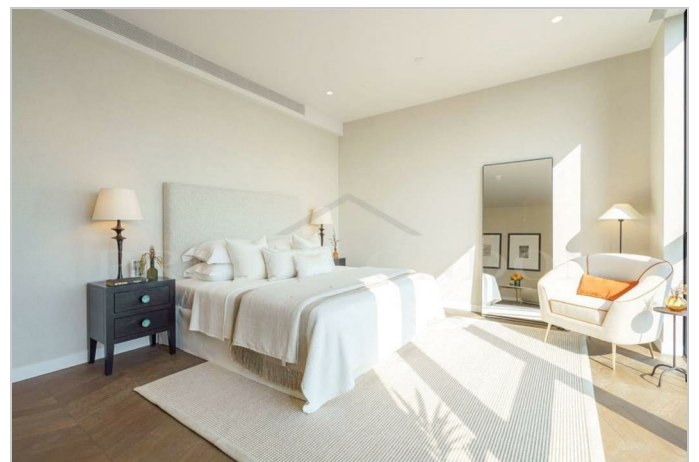


Penthouse apartment. This exceptional and brand new 2,841 sq ft / 264 sq m three bedroom duplex apartment with garden and roof terrace, set on top of the highly sought after Battersea Power Station development (next to the River Thames, Battersea Park and new Battersea Power Station Northern Line station), is available for chain free sale through Prime London.

Finished to an incredibly high standard throughout, the entrance floor of this apartment comprises of a beautifully designed dining area leading to a private garden, an exceptional fully fitted kitchen, and stylish WC. On the next floor the property further comprises a 40 foot front to back reception, three well-proportioned double bedrooms with built in wardrobes (primary with dressing area), three ensuite bathrooms, and a private balcony. On the top floor you will find the truly exceptional roof terrace with astounding views of the Power Station, River Thames, and City.

Battersea Power Station is one of the country's most well-known cultural and architectural landmarks, with the iconic Grade II\* listed Power Station at its heart. Around every corner you'll find world-class architecture, from Foster + Partners' Battersea Roof Gardens to Gehry Partners' masterful Battersea Prospect Place.

With the new Zone 1 Northern Line Underground station also having just opened, Battersea Power Station is now connected to all major transport routes across the city and beyond. Waterloo (7 minutes), London Bridge (10 minutes), Bank (12 minutes), and King's Cross (20 minutes). \*Images and location plan are for illustrative purposes only, and are intended as an approximate guide\*



These particulars, whilst believed to be accurate are set out as a general outline only for guidance and do not constitute any part of an offer or contract. Intending purchasers should not rely on them as statements of representation of fact, but must satisfy themselves by inspection or otherwise as to their accuracy. No person in this firm's employment has the authority to make or give any representation or warranty in respect of the property.

Palace View, 131 Lambeth Road, London SE1 7BT | 21 Grosvenor Gardens, Belgravia, London SW1W 0BP

Tel: 0207 928 6663 | 0207 052 1075 Email: Office@PrimeLondonResidential.com www.PrimeLondonResidential.com