



Rimdale Drive, Fairfield, Stockton-On-Tees, TS19 7LD

Offered for sale with the benefit of NO CHAIN this well presented, recently upgraded one bedroom mid-terrace bungalow, conveniently located near to Rimswell Shops where a Post Office, Dentist, Bakers, convenience store, and hair salon are available.

Inside, you will find a practical layout featuring warm air ducted gas heating and UPVC double glazing throughout. The bungalow comprises a welcoming hallway with a composite entrance door, a cosy lounge with an attractive modern fireplace and electric fire, kitchen, spacious double bedroom with built-in wardrobes and a large window overlooking the lawned rear garden, and a convenient shower room.

Outside, a low maintenance front garden, softened with shrubbery, adds to the appeal of this property.

Asking Price £105,000



Rimdale Drive, Fairfield, Stockton-On-Tees, TS19 7LD

HALL

LOUNGE

13'11 x 9'11 (4.24m x 3.02m)

KITCHEN

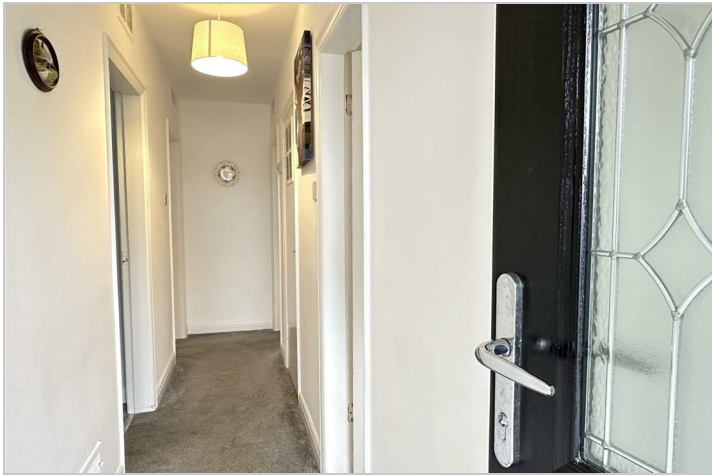
12'7 x 8'3 (3.84m x 2.51m)

BEDROOM

12'7 x 10'6 (3.84m x 3.20m)

SHOWER ROOM / WC

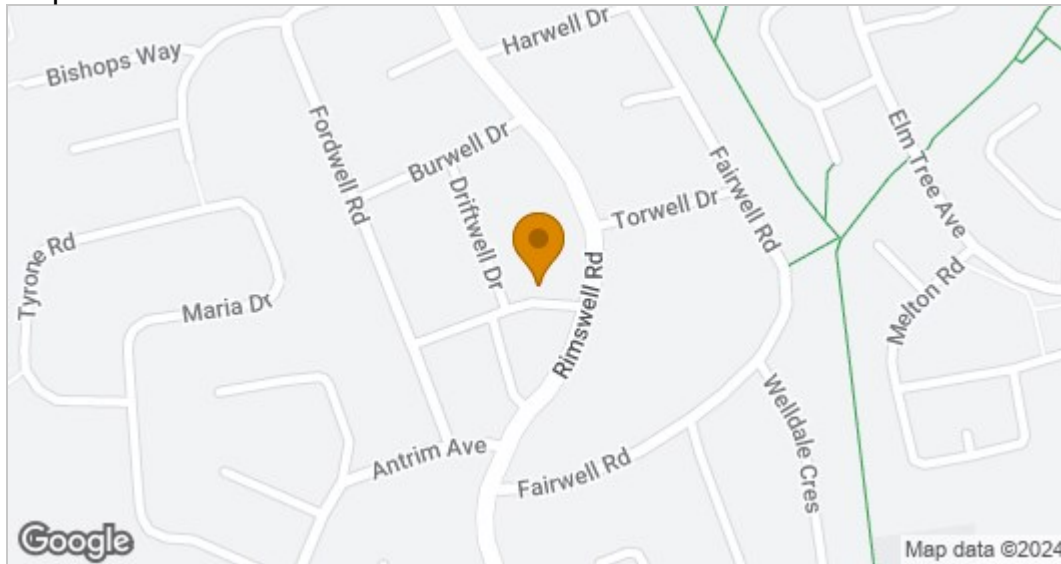
8'9 x 4'9 (2.67m x 1.45m)



Floor Plan

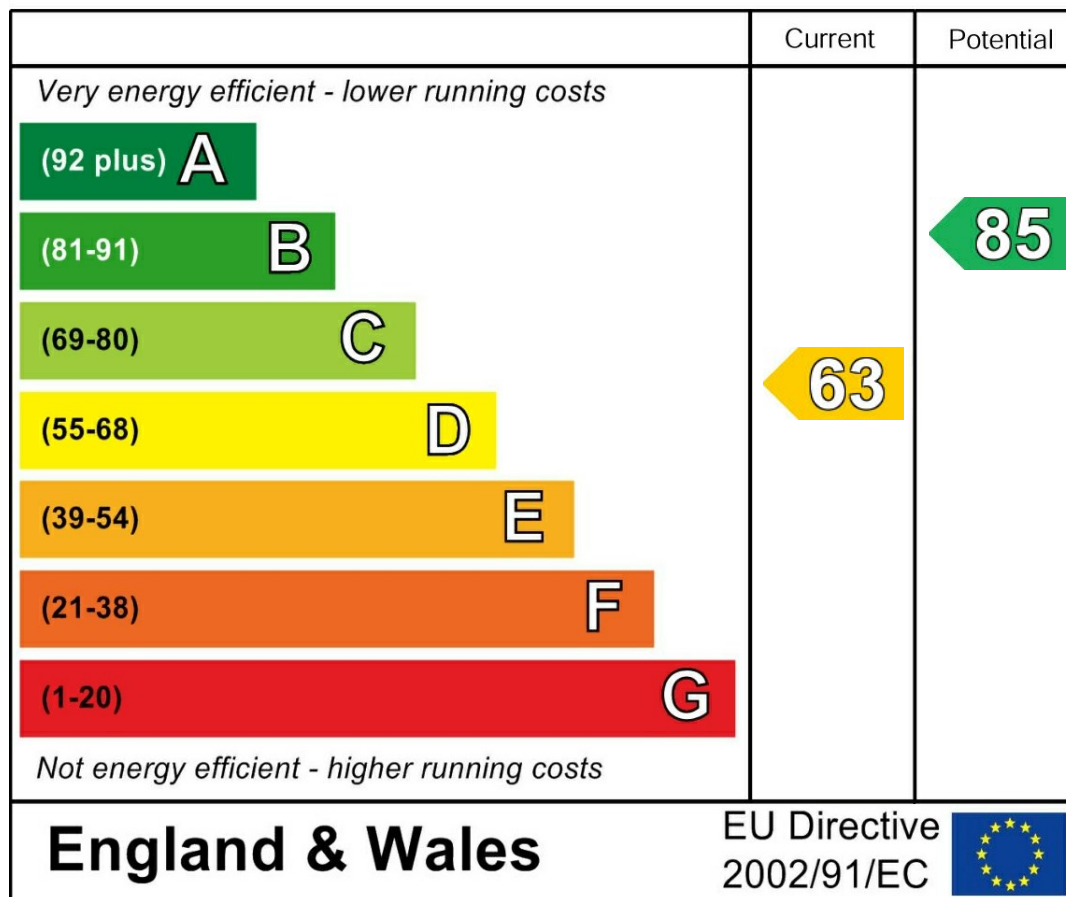


Map



EPC graph

Energy Efficiency Rating



VIEWING

Please contact us on 01642 615657 if you wish to arrange a viewing or would like more information.

These particulars, whilst believed to be accurate are set out as a general outline only for guidance and do not constitute any part of an offer or contract. Intending purchasers should not rely on them as statements of representation of fact, but must satisfy themselves by inspection or otherwise as to their accuracy. No person in this firm's employment has the authority to make or give any representation or warranty in respect of the property.