



## Crimdon Beck Close, Stockton-On-Tees, TS18 2QH

Modern three bedroom detached family home with garage and off-road parking, situated on the popular White Water Glade development, located within easy reach of local shops, amenities and good transport links for commuting.

Accommodation is well presented throughout and comprises entrance hall, lounge, open plan high gloss kitchen/dining room with fitted appliances and French doors leading out to the rear. Utility room and cloakroom/WC complete the ground floor. Moving upstairs the landing provides access to the master bedroom with en-suite, two further bedrooms and a family bathroom.

Externally there is a garden to the front aspect with shrubs and pathway to the entrance door. To the rear is an enclosed garden which is mainly laid to lawn. Allocated parking is available in addition to a single garage.

Offers Over £175,000



# Crimdon Beck Close, Stockton-On-Tees, TS18 2QH

**ENTRANCE HALL**

**LOUNGE**

12'11 x 12'4 (3.94m x 3.76m)

**CLOAKROOM/WC**

5'3 x 3'0 (1.60m x 0.91m)

**KITCHEN/DINING ROOM**

18'0 x 9'3 (5.49m x 2.82m)

**UTILITY**

**LANDING**

**MASTER BEDROOM**

12'10 x 10'8 (3.91m x 3.25m)

**EN-SUITE**

5'10 x 5'10 (1.78m x 1.78m)

**BEDROOM TWO**

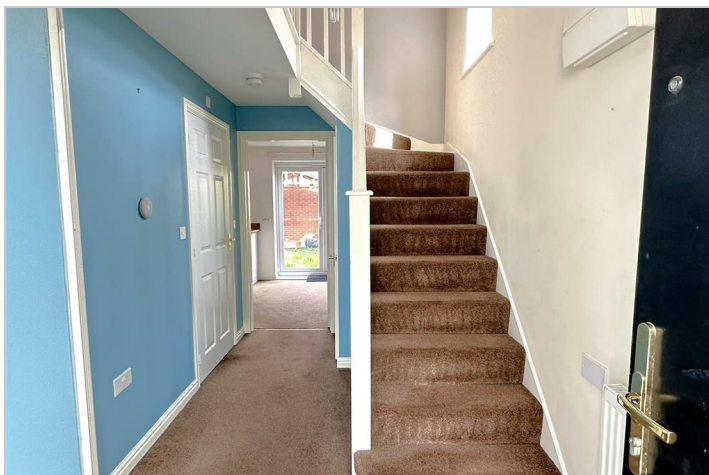
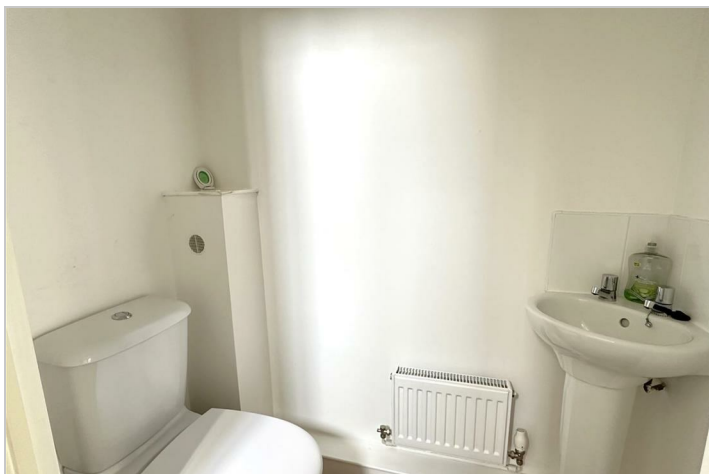
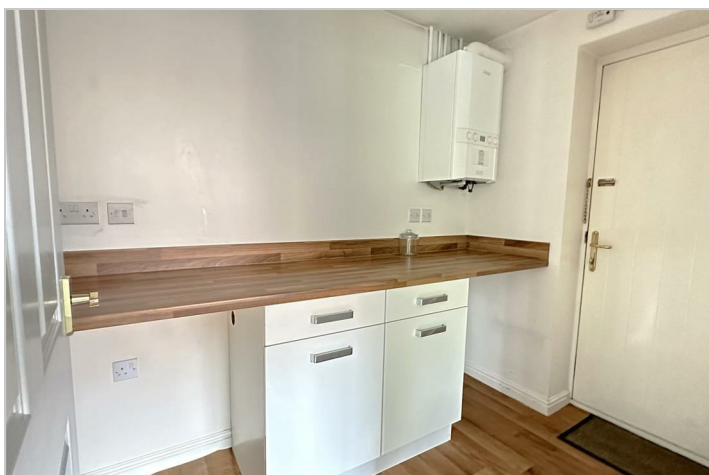
9'6 x 9'6 (2.90m x 2.90m)

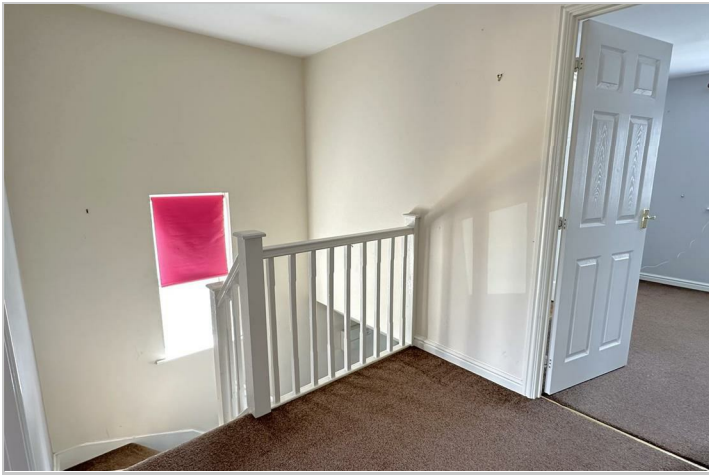
**BEDROOM THREE**

9'7 x 8'3 (2.92m x 2.51m)

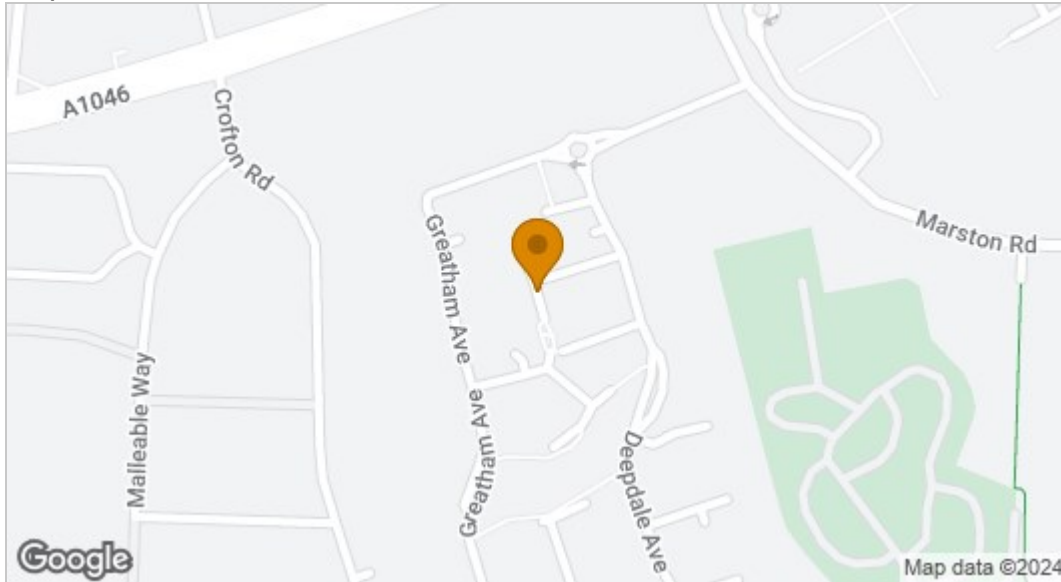
**BATHROOM**

6'11 x 5'7 (2.11m x 1.70m)

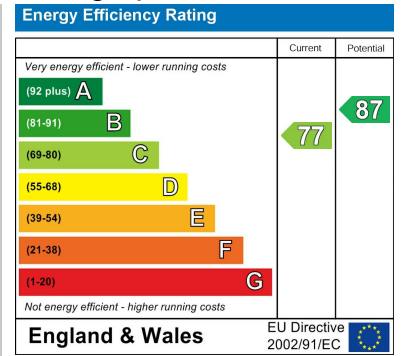




## Map



## EPC graph



## Floor Plan



## VIEWING

Please contact us on 01642 615657 if you wish to arrange a viewing or would like more information.

These particulars, whilst believed to be accurate are set out as a general outline only for guidance and do not constitute any part of an offer or contract. Intending purchasers should not rely on them as statements of representation of fact, but must satisfy themselves by inspection or otherwise as to their accuracy. No person in this firm's employment has the authority to make or give any representation or warranty in respect of the property.