



Sandringham Road, Park End, Middlesbrough, TS3 0DD

ATTENTION FIRST TIME BUYERS AND INVESTORS! A stunning 3-bedroom semi-detached house offering excellent family accommodation.

The property benefits from LOUNGE with electric fireplace, MODERN KITCHEN, BEDROOMS WITH BUILT IN WARDROBES & STYLISH BATHROOM/WC plus a separate WC, GAS CENTRAL HEATING and UPVC DOUBLE GLAZING.

Externally there are good sized gardens with a good level of privacy, and a driveway providing off-road parking for 2 cars plus hardstanding and a GARAGE. The owner advises that the house was rewired in 2015 and a new boiler installed in 2020 (with a 7 year warranty).

This property has proved to be a popular rental home and previously let for £625.00 PCM. The location offers amenities within walking distance, including supermarkets, schools and leisure facilities.

Asking Price £90,000



Sandringham Road, Park End, Middlesbrough, TS3 0DD

HALLWAY

LOUNGE

13'11 x 12'6 (4.24m x 3.81m)

KITCHEN

13'10 x 6'10 (4.22m x 2.08m)

UTILITY

6'9 x 5'6 (2.06m x 1.68m)

LANDING

MASTER BEDROOM

12'6 x 10'8 (3.81m x 3.25m)

REAR BEDROOM

9'11 x 6'11 (3.02m x 2.11m)

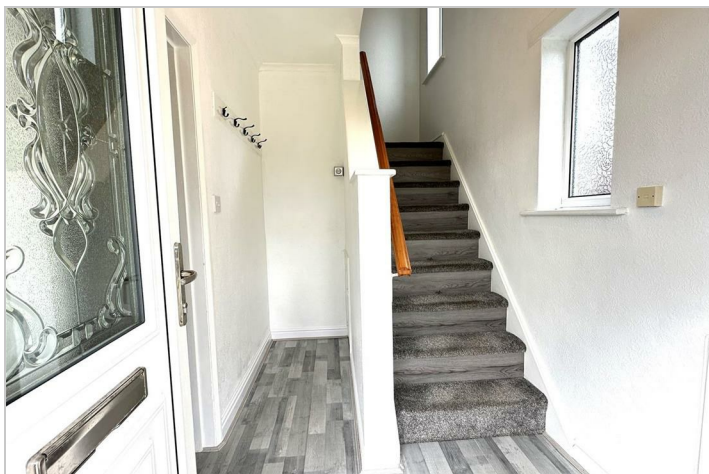
FRONT BEDROOM

9'3 x 9'1 (2.82m x 2.77m)

BATHROOM

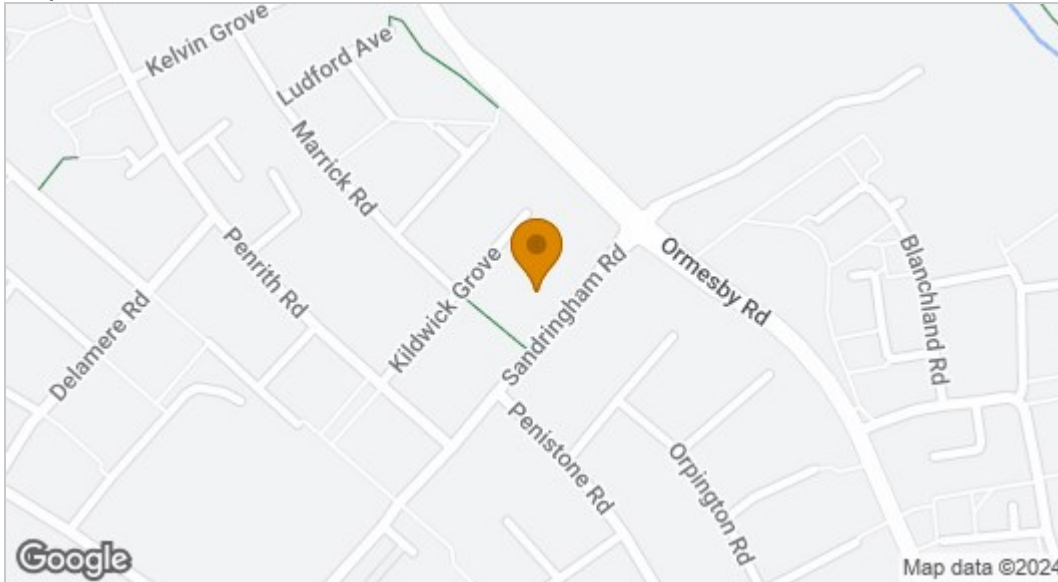
6'10 x 5'5 (2.08m x 1.65m)

SEPARATE WC

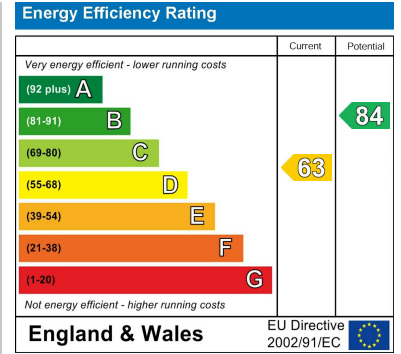




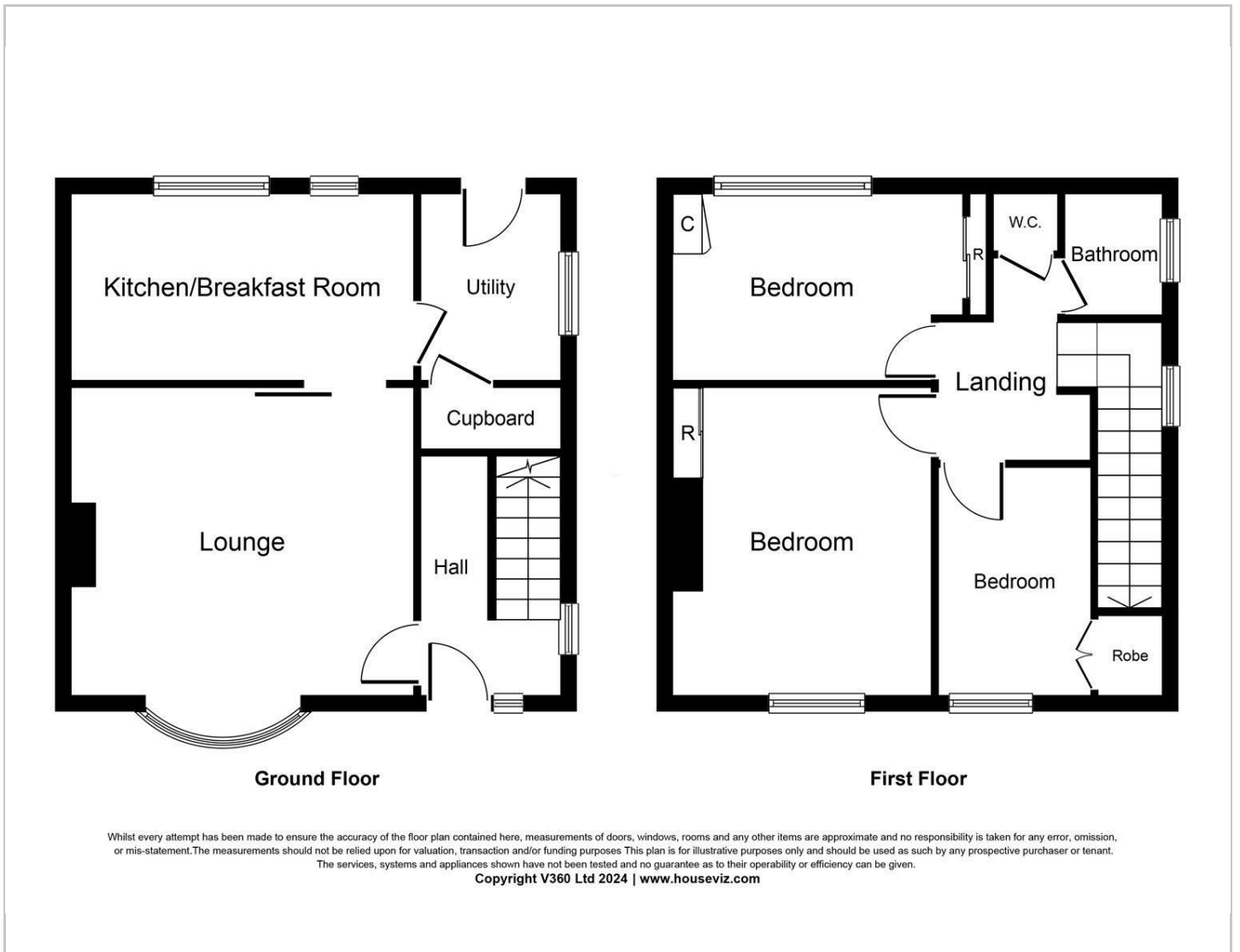
Map



EPC graph



Floor Plan



VIEWING

Please contact us on 01642 615657 if you wish to arrange a viewing or would like more information.

These particulars, whilst believed to be accurate are set out as a general outline only for guidance and do not constitute any part of an offer or contract. Intending purchasers should not rely on them as statements of representation of fact, but must satisfy themselves by inspection or otherwise as to their accuracy. No person in this firm's employment has the authority to make or give any representation or warranty in respect of the property.

17 Bishop Street, Stockton on Tees, TS18 1SY

Tel: 01642 615657 Email: stockton@gowlandwhite.co.uk <https://www.gowlandwhite.co.uk/>