



## Turnwrest Grove, Stockton-On-Tees, TS19 8GY

Discover modern living in this 3 bed end terrace house, built by Avant Homes to their 'Cambridge' style. Step into a world of modern living and purchase this stylish build which benefits from the remaining balance of an NHBC warranty.

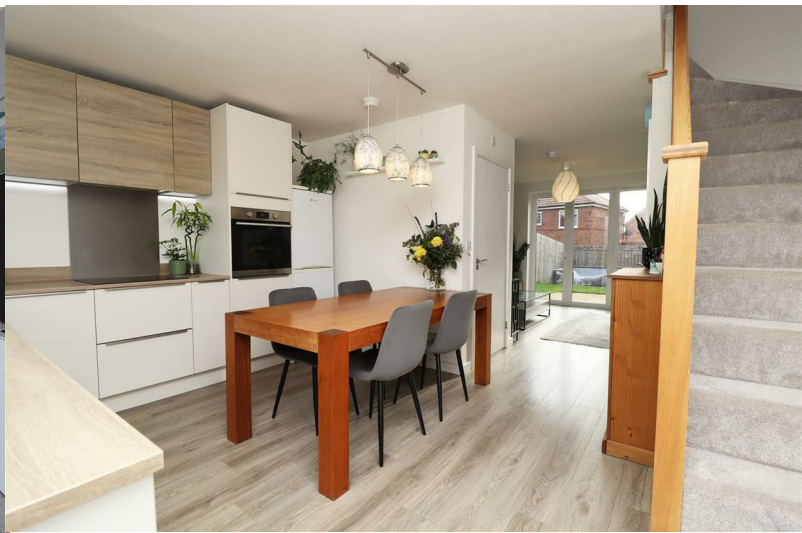
The ground floor boasts a spacious lounge with bifold doors that open up to the garden, creating a seamless indoor-outdoor flow. The contemporary kitchen/dining room features an excellent range of modern units to include integrated oven and induction hob. A convenient ground floor wc adds to the practicality of the ground floor accommodation.

Ascend to the first floor to find three bedrooms and a family bathroom.

Outside, the property comes with a block-paved driveway offering parking space for two vehicles. The rear garden is SOUTH FACING for maximum enjoyment.

Summerville Village is located within close proximity to a number of primary and secondary schools, a large Tesco Supermarket and petrol station and a short drive to the A177 with transport links to the north and south.

Asking Price £175,000



Turnwrest Grove, Stockton-On-Tees, TS19 8GY

HALL

KITCHEN/DINING ROOM  
14'10" x 11'1" (4.52m x 3.38m)

CLOAKROOM/WC  
5'8" x 3'8" (1.73m x 1.12m)

LIVING ROOM  
10'1" x 14'10" (3.07m x 4.52m )

LANDING

BEDROOM ONE  
8'4" x 15" (2.54m x 4.57m )

BEDROOM TWO  
7'5" x 10'5" (2.26m x 3.18m )

BATHROOM/WC  
7'2" x 6'3" (2.18m x 1.91m)

BEDROOM THREE  
7'3" x 10'5" (2.21m x 3.18m )

