



Shannon Crescent, Fairfield, Stockton-On-Tees, TS19 7JG

Semi detached bungalow occupying an larger than average CORNER PLOT, landscaped with low maintenance in mind. Shannon Crescent is a pleasant cul-de-sac in a popular Fairfield location and the property is offered with NO ONWARD CHAIN.

The property in brief comprises; entrance porch, hall, lounge, kitchen, 2 bedrooms with fitted wardrobes, shower room and a garden room with access to the rear garden. The accommodation also benefits from gas central heating with a modern Vaillant combi boiler installed in 2019.

Externally is a large block paved driveway providing ample off road parking and a detached garage with workshop space. There are well presented low maintenance gardens to the front, side and rear - the rear garden is SOUTH FACING and provides an ideal sun trap with good levels of privacy.

A range of shops are conveniently located nearby which include a Post Office, Dental Practice, bakery and take away shops. Bus services are available on Rimswell Road, providing excellent public transport links.

Asking Price £165,000



Shannon Crescent, Fairfield, Stockton-On-Tees, TS19 7JG

HALL

LOUNGE

11'8" x 17'8" (3.56m x 5.38m)

SHOWER ROOM

7'1" x 6'3" (2.16m x 1.91m)

KITCHEN

10'2" x 8'5" (3.10m x 2.57m)

BEDROOM ONE

11'9" x 9'10" (3.58m x 3.00m)

BEDROOM TWO

10'3" x 8'1" (3.12m x 2.46m)

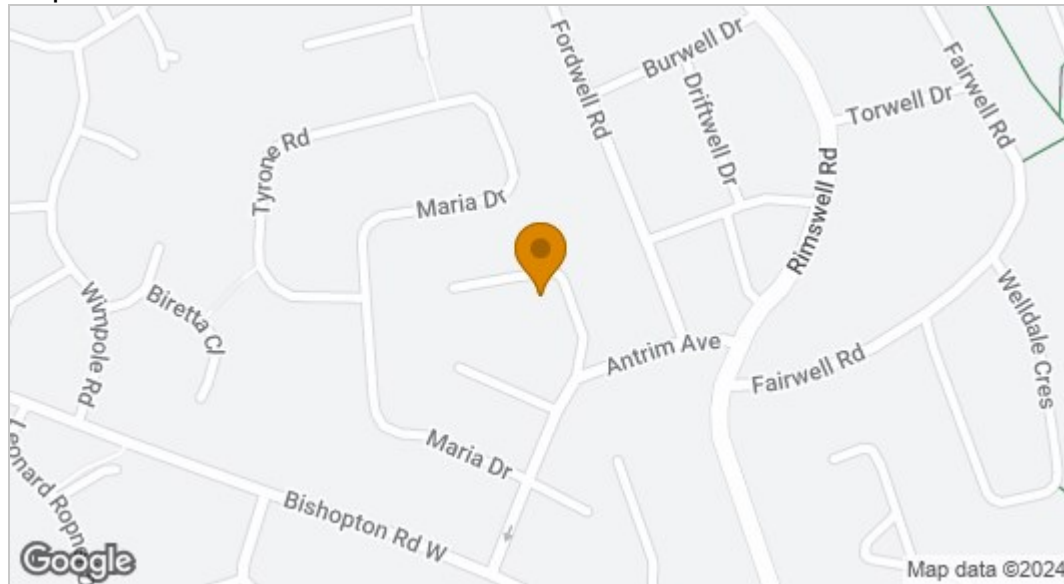
GARDEN ROOM

11'4" x 9'5" (3.45m x 2.87m)

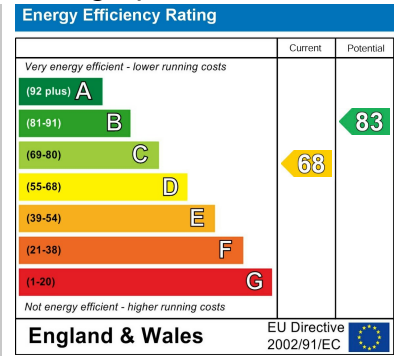




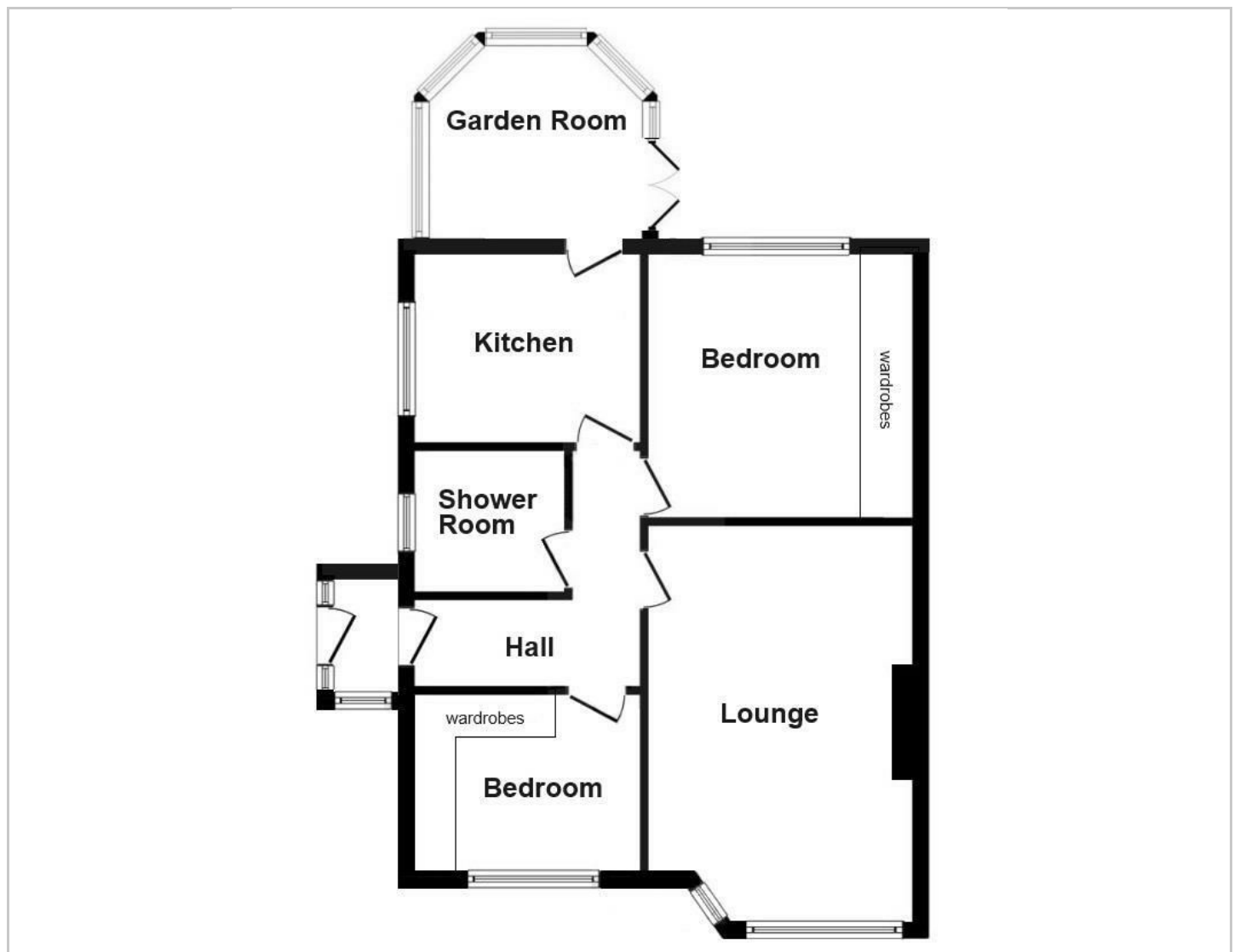
Map



EPC graph



Floor Plan



VIEWING

Please contact us on 01642 615657 if you wish to arrange a viewing or would like more information.

These particulars, whilst believed to be accurate are set out as a general outline only for guidance and do not constitute any part of an offer or contract. Intending purchasers should not rely on them as statements of representation of fact, but must satisfy themselves by inspection or otherwise as to their accuracy. No person in this firm's employment has the authority to make or give any representation or warranty in respect of the property.