



Ainderby Grove, Hartburn, Stockton-On-Tees, TS18 5PJ

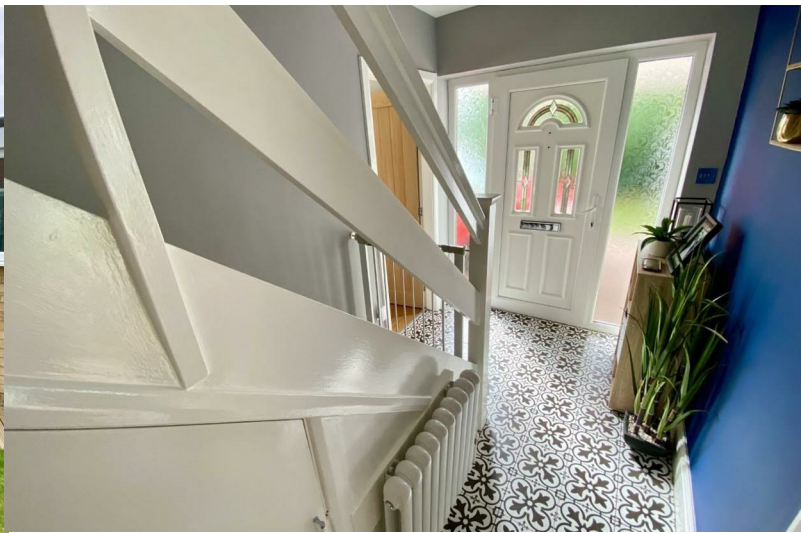
DETACHED HOUSE situated on a generous corner site of a pleasant cul-de-sac in Hartburn, close to reputable schooling, shops and amenities, and having good access to road and transport links for commuting.

The property is approached via a long driveway and provides gardens to the front, side and rear, offering a new buyer the scope to extend subject to the relevant planning consents. Internally the accommodation is well presented and comprises entrance hall, lounge with window to the front, dining room with patio doors opening out to the rear garden, and kitchen fitted with a good range of units with access door leading out to the side. There are three good size bedrooms located on the first floor along with a spacious contemporary family bathroom with three piece suite including shower and screen over bath.

Outside there is ample space for a growing family to enjoy and entertain, with lawned gardens to the front and side and gated access to the enclosed rear garden which provides lawn and timber decked patio area. Off road parking is available for several vehicles on the block paved driveway which leads to the single garage.

Contact Gowland White to arrange a viewing.

Offers Over £230,000



Ainderby Grove, Hartburn, Stockton-On-Tees, TS18 5PJ

ENTRANCE HALL

LOUNGE
17'11" x 11'10" (5.46 x 3.61)

KITCHEN
15'8" x 7'10" (4.78 x 2.39)

DINING ROOM
9'7" x 9'0" (2.92 x 2.74)

BEDROOM ONE
9'7" x 12'6" (2.92 x 3.81)

BEDROOM TWO
11'11" x 8'8" (3.63 x 2.64)

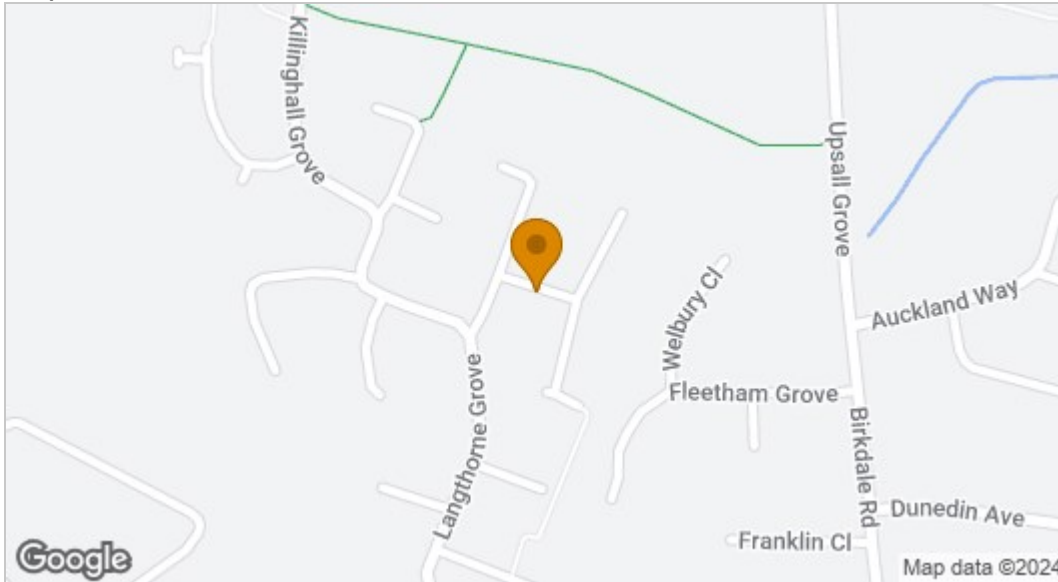
BEDROOM THREE
8'8" x 8'11" (2.64 x 2.72)

BATHROOM
10'10" x 5'6" (3.30 x 1.68)

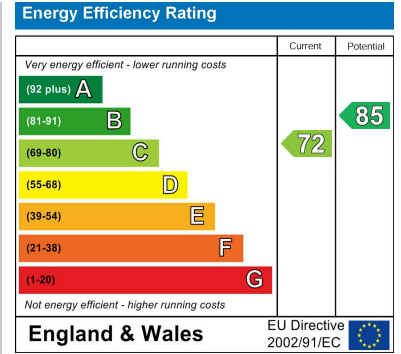




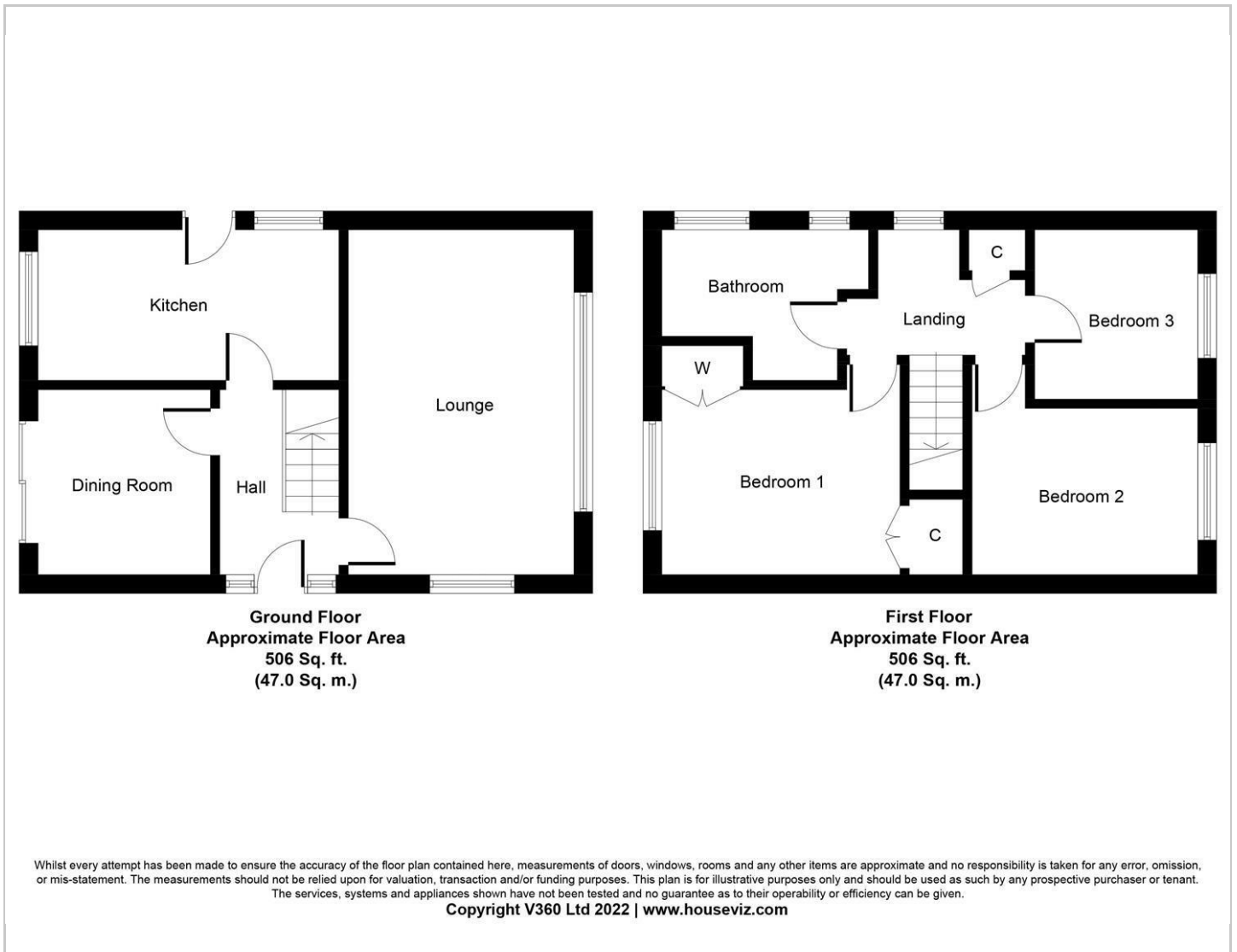
Map



EPC graph



Floor Plan



VIEWING

Please contact us on 01642 615657 if you wish to arrange a viewing or would like more information.

These particulars, whilst believed to be accurate are set out as a general outline only for guidance and do not constitute any part of an offer or contract. Intending purchasers should not rely on them as statements of representation of fact, but must satisfy themselves by inspection or otherwise as to their accuracy. No person in this firm's employment has the authority to make or give any representation or warranty in respect of the property.