



## Harewood Crescent, Elm Tree, Stockton-On-Tees, TS19 0SZ

This 4 bedroom DETACHED HOUSE situated within a cul-de-sac on The Elm Tree Development, which benefits from a small parade of shops, The Elm Tree pub and Whitehouse Primary School. Our Lady & St Bedes Secondary School and Stockton Sixth Form College is within walking distance as is Sainsburys Supermarket.

The gas centrally heated and uPVC double glazed accommodation comprises entrance hall, an open-plan lounge and dining room, conservatory and a kitchen equipped with a newly fitted induction hob and oven. There's also a convenient ground floor WC and utility room.

Upstairs, you'll find four generously sized bedrooms, the master bedroom boasts a brand-new en suite. A well-appointed family bathroom serves the remaining bedrooms.

Externally, the property features a driveway with parking for two vehicles, along with additional storage within the store/garage. The good sized enclosed rear garden is complete with a lawn and two inviting patio areas, perfect for entertaining.

Offers In The Region Of £220,000





# Harewood Crescent, Elm Tree, Stockton-On-Tees, TS19 0SZ

## HALL

## LOUNGE

10'8" x 14'0" (3.25 x 4.27)

## DINING

9'6" x 8'11" (2.90 x 2.72)

## CONSERVATORY

8'11" x 9'10" (2.72 x 3.00)

## KITCHEN

8'10" x 11'1" (2.69 x 3.38)

## WC

2'10" x 5'6" (0.86 x 1.68)

## UTILITY ROOM

9'0" x 10'0" (2.74 x 3.05)

## BEDROOM ONE

9'4" x 17'1" (2.84 x 5.21)

## EN SUITE

5'10" x 5'2" (1.78 x 1.57)

## BEDROOM TWO

13'7" x 11'0" (4.14 x 3.35)

## BEDROOM THREE

7'7" x 9'6" (2.31 x 2.90)

## BEDROOM FOUR

10'2" x 8'11" (3.10 x 2.72)

## BATHROOM

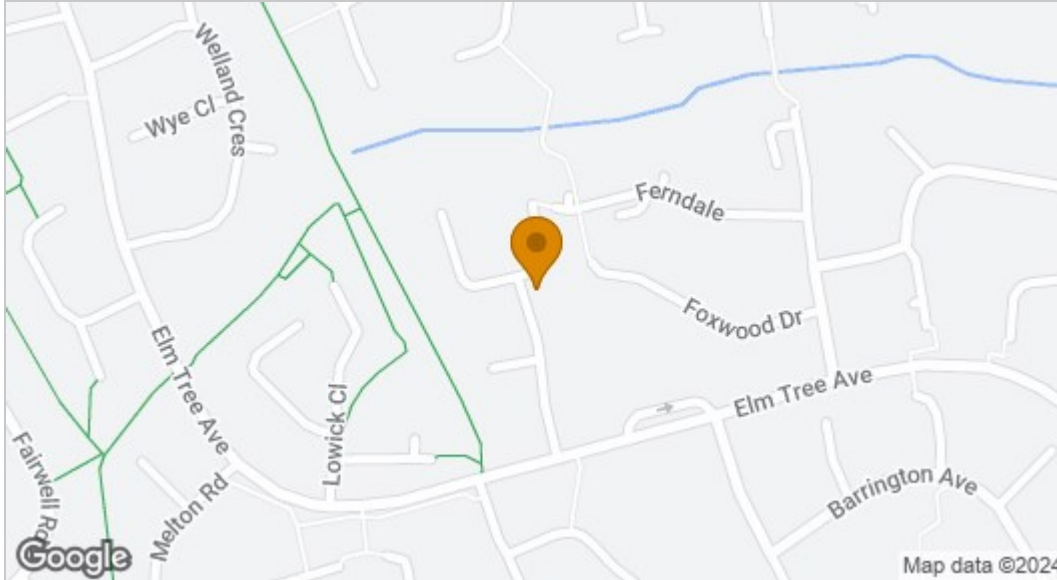
5'7" x 6'10" (1.70 x 2.08)



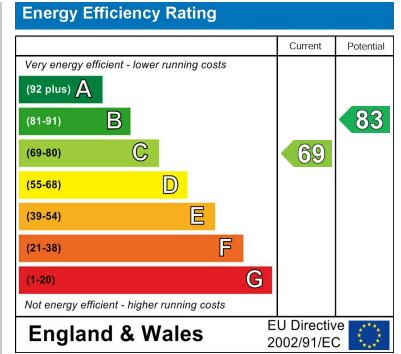




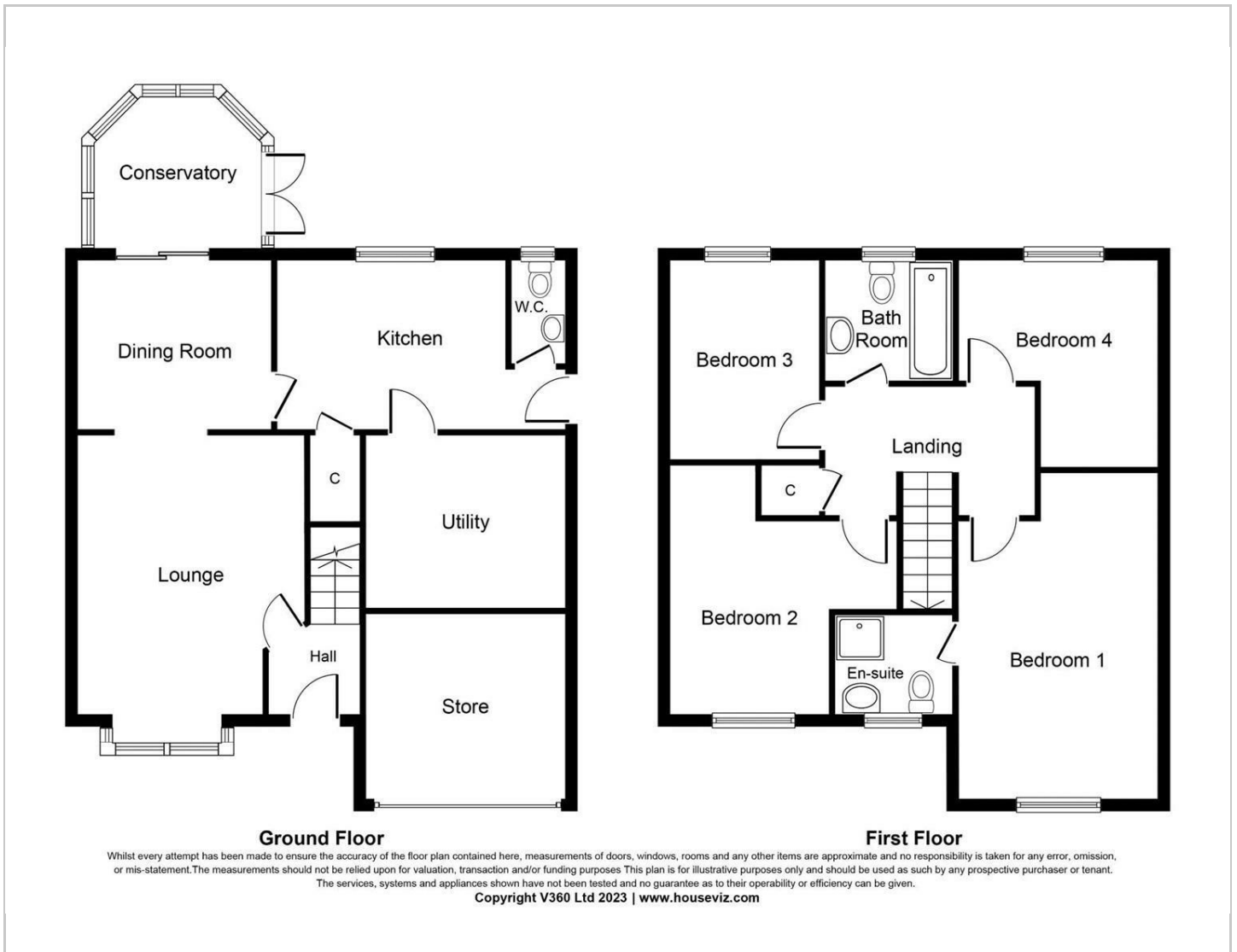
## Map



## EPC graph



## Floor Plan



## VIEWING

Please contact us on 01642 615657 if you wish to arrange a viewing or would like more information.

These particulars, whilst believed to be accurate are set out as a general outline only for guidance and do not constitute any part of an offer or contract. Intending purchasers should not rely on them as statements of representation of fact, but must satisfy themselves by inspection or otherwise as to their accuracy. No person in this firm's employment has the authority to make or give any representation or warranty in respect of the property.