



Taurus Close, Stockton-On-Tees, TS18 3UT

IMPRESSIVE EXTENDED DETACHED HOUSE situated on the modern Queensgate Development which lies between Hartburn and Yarm, and perfectly located for commuting throughout the region via the nearby A66 and A19. The property is conveniently positioned within walking distance of Preston Park and Museum, Ropner Park, a Lidl Supermarket in addition to The Ivy Tree Pub and Kitchen.

Built by Bellway Homes to their 'Brampton' design, this beautiful home is presented to an impressively high standard throughout and will suit a range of buyers.

The property is approached via a driveway leading to the integral garage with power and electrics, and to the the property entrance. To the ground floor the entrance hall provides access to a cosy lounge, dining room with French doors leading out to the rear garden, and a contemporary kitchen fitted with an excellent range of high gloss units incorporating Neff appliances to include oven, hob, dishwasher and fridge/freezer. Completing the ground floor is a utility room and cloakroom/wc. Located on the first floor is a master bedroom with en-suite shower room, two further double bedrooms and a family bathroom with shower over the bath.

Off road parking is available on the driveway along with a single garage which allows for additional parking or storage. There is a lawned garden to the front and gated access to the side leads to the enclosed Westerly facing rear garden which offers lawn and paved patio.

Asking Price £215,000



Taurus Close, Stockton-On-Tees, TS18 3UT

ENTRANCE HALL

LOUNGE

17' 11" x 11' 5"

DINING ROOM

19' 7" x 10' 5"

KITCHEN

10' 10" x 8' 11"

UTILITY ROOM

5' 7" x 5'

CLOAKROOM/WC

5' x 3' 1"

FIRST FLOOR LANDING

BEDROOM ONE

13' 10" x 8' 7" reducing to 6' 1"

EN-SUITE

5' 11" x 5' 6"

BEDROOM TWO

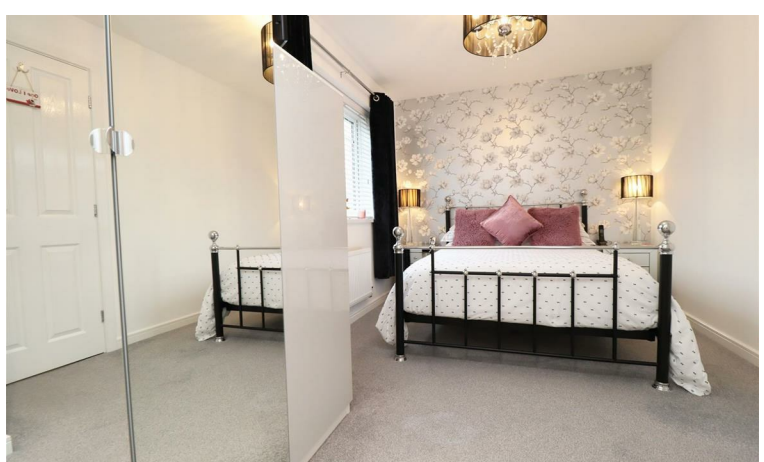
10' 7" x 9' 10"

BEDROOM THREE

9' 7" x 8' 2"



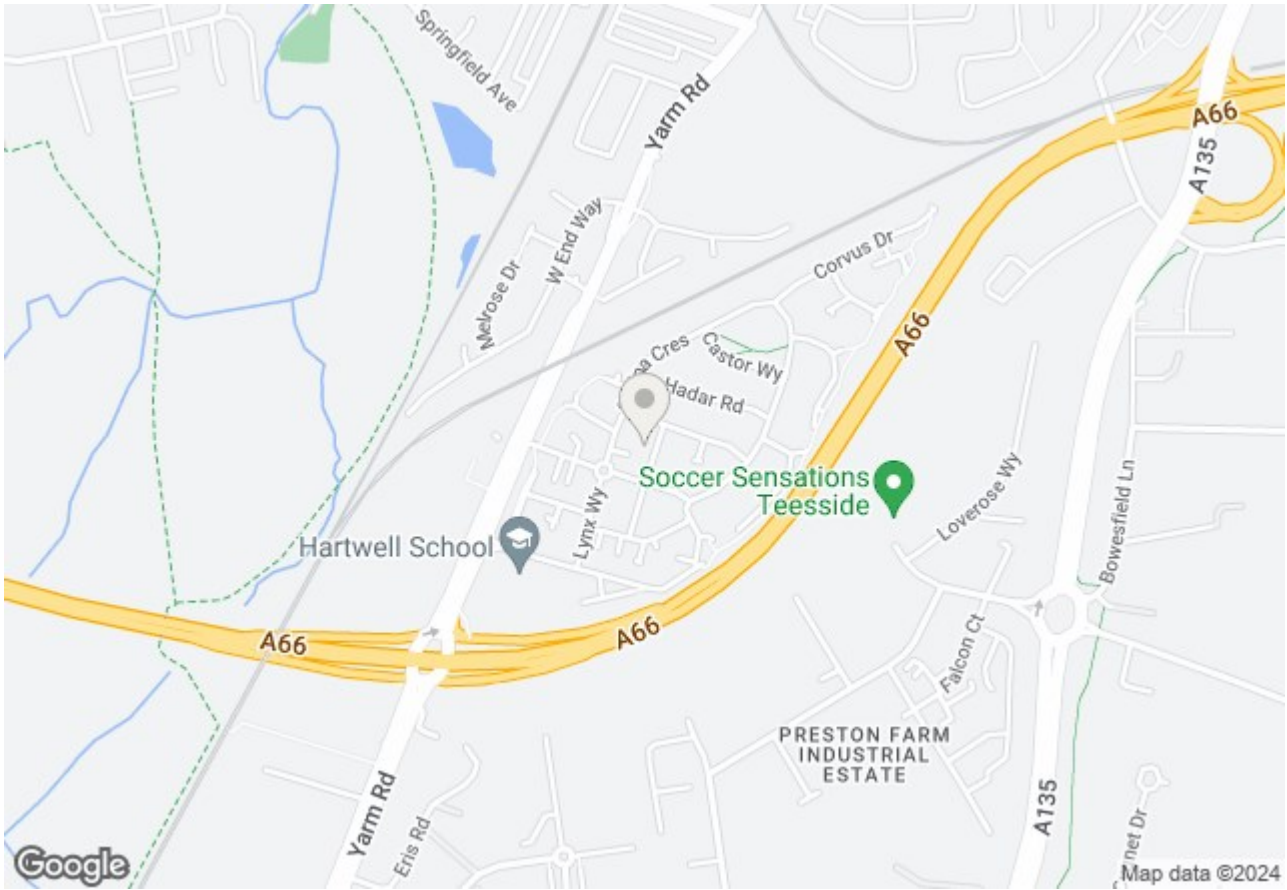
Taurus Close, Stockton-On-Tees, TS18 3UT



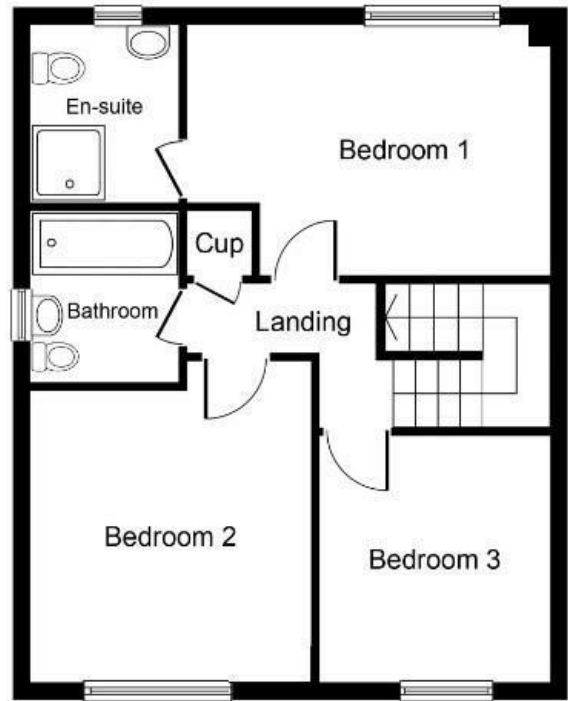
Taurus Close, Stockton-On-Tees, TS18 3UT



Taurus Close, Stockton-On-Tees, TS18 3UT

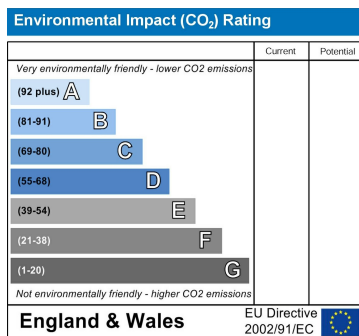
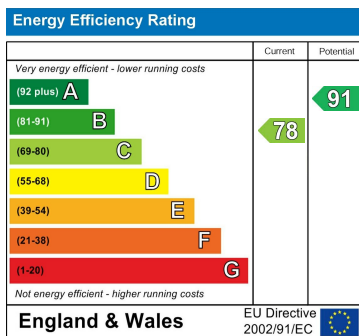


Ground Floor



First Floor

Taurus Close, Stockton-On-Tees, TS18 3UT



VIEWING

Please contact us on 01642 615657 if you wish to arrange a viewing or would like more information.

These particulars, whilst believed to be accurate are set out as a general outline only for guidance and do not constitute any part of an offer or contract. Intending purchasers should not rely on them as statements of representation of fact, but must satisfy themselves by inspection or otherwise as to their accuracy. No person in this firm's employment has the authority to make or give any representation or warranty in respect of the property.