



Hartburn Village, Stockton-On-Tees, TS18 5DY

Offered for sale with the advantage of NO ONWARD CHAIN and rarely available, this Grade II listed quaint cottage is situated in the highly sought after, picturesque, tree-lined Hartburn Village. This end terraced cottage retains many original features adding to its character and traditional feel.

Internally the property is deceptively spacious and comprises entrance hall, cosy lounge with log burner, adding warmth and ambiance, a kitchen with area for dining and underfloor heating, a study/adaptable room which allows a new buyer the option to change the room's purpose as needed. The study has an access door leading out to the rear courtyard and door leading to the ground floor bathroom/wc, The first floor provides two comfortable, good sized double bedrooms.

Outside the cottage features a large garden to the front with lawn, borders and shrubs, and to the rear is an enclosed yard which offers a private and secure area.

Conveniently positioned to nearby amenities, the property is also close to a parade of shops including a cafe, bistro, supermarket, hair and beauty salons, The Village Deli, three public houses, in addition to the popular Ropner Park which is within walking distance.

Offers Over £170,000



Hartburn Village, Stockton-On-Tees, TS18 5DY

ENTRANCE HALL

LOUNGE

14'5" x 11'1" (4.39 x 3.38)

KITCHEN/DINING

13'11" x 9'6" (4.24 x 2.90)

STUDY

8'7" x 6'11" (2.62 x 2.11)

GROUND FLOOR BATHROOM/WC

7'4" x 6'11" (2.24 x 2.11)

FIRST FLOOR LANDING

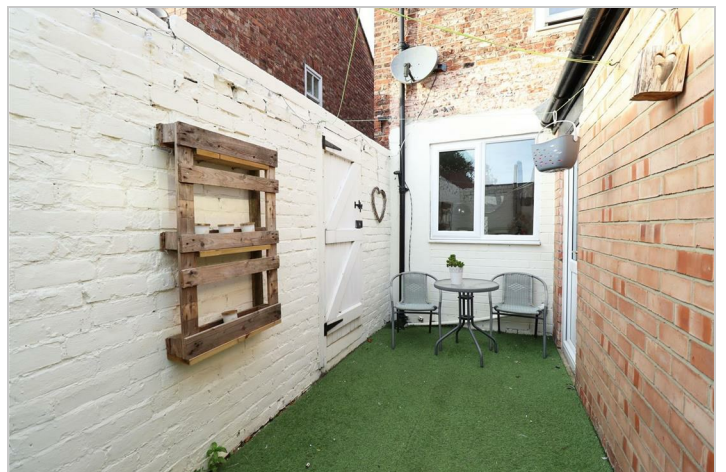
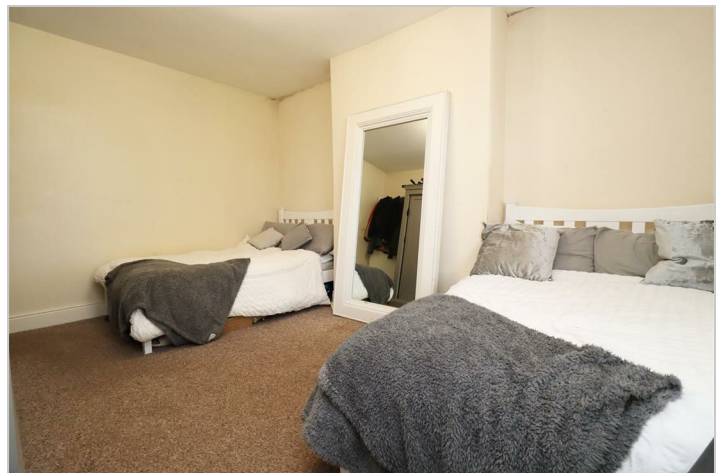
BEDROOM ONE

14'5" x 11'5" (4.39 x 3.48)

BEDROOM TWO

13'11" x 9'6" (4.24 x 2.90)

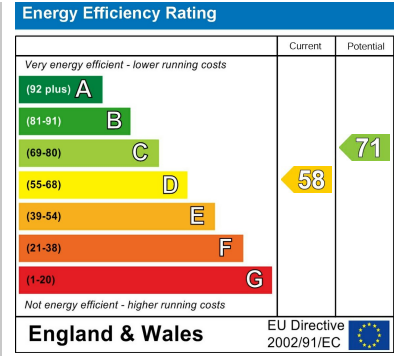




Map



EPC graph



Floor Plan



VIEWING

Please contact us on 01642 615657 if you wish to arrange a viewing or would like more information.

These particulars, whilst believed to be accurate are set out as a general outline only for guidance and do not constitute any part of an offer or contract. Intending purchasers should not rely on them as statements of representation of fact, but must satisfy themselves by inspection or otherwise as to their accuracy. No person in this firm's employment has the authority to make or give any representation or warranty in respect of the property.

17 Bishop Street, Stockton on Tees, TS18 1SY

Tel: 01642 615657 Email: stockton@gowlandwhite.co.uk <https://www.gowlandwhite.co.uk/>