



Kirkwall Close, Fairfield, Stockton-On-Tees, TS19 7SE

SPACIOUS semi detached house situated in a popular Fairfield residential area on a corner position benefiting from gardens to the front, side and rear, along with ample parking on the block paved driveway.

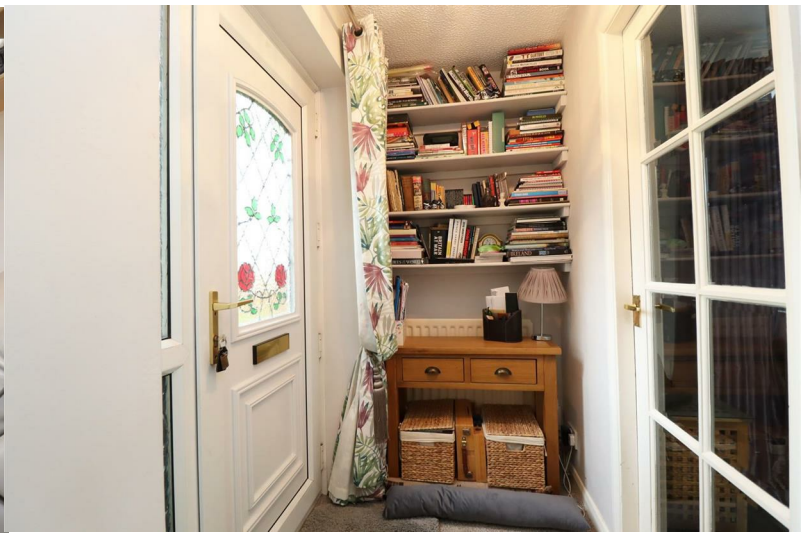
The property is well presented throughout and has been extended to provide versatile living to the ground floor which comprises entrance hall, lounge with sound proofing, media wall and feature contemporary fire, and kitchen fitted with a good range of units incorporating built in oven, gas hob, integrated dishwasher and washing machine. A second reception room offers flexibility and is currently used as a family room and dining area with double doors leading out to the rear garden.

The first floor landing provides access to a family bathroom with white suite and three bedrooms with built in wardrobes. Bedroom three is currently utilised as a dressing room to the master bedroom. The loft space is fully boarded to provide extra storage space.

Externally is a lawned garden to the front and side. The enclosed rear garden is designed for low maintenance with newly laid timber decked patio, paved areas, garden pergola, and a timber garden shed with power. Parking is available on the block paved driveway to the side which can also accommodate a caravan or motorhome, and there is gated access to a single garage with power.

Kirkwall Close is conveniently positioned having easy access to a range of shopping facilities, reputable local schooling and access to the A66 and good transport links for commuting.

Asking Price £180,000



Kirkwall Close, Fairfield, Stockton-On-Tees, TS19 7SE

ENTRANCE HALL

LOUNGE

15'10" x 10'3" (4.83 x 3.12)

KITCHEN

14'6" x 8'1" (4.42 x 2.46)

SECOND RECEPTION ROOM

17'2" x 8'11" (5.23 x 2.72)

FIRST FLOOR LANDING

FAMILY BATHROOM

6'0" x 5'10" (1.83 x 1.78)

BEDROOM ONE

14'2" x 8'3" (4.32 x 2.51)

With built in wardrobes.

BEDROOM TWO

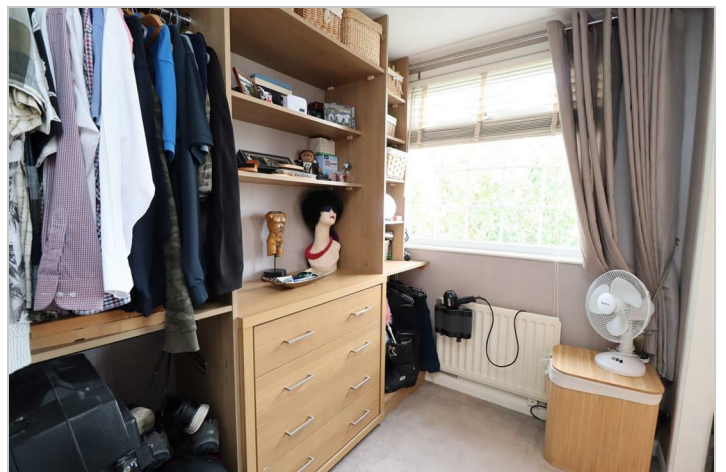
9'10" x 8'3" (3.00 x 2.51)

With built in wardrobes.

BEDROOM THREE

7'1" x 5'10" (2.16 x 1.78)

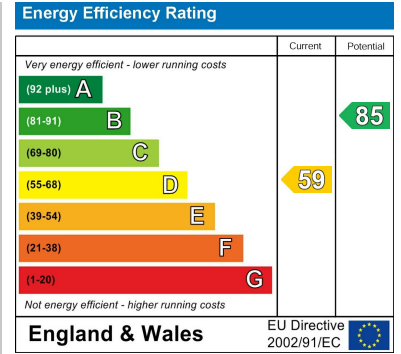




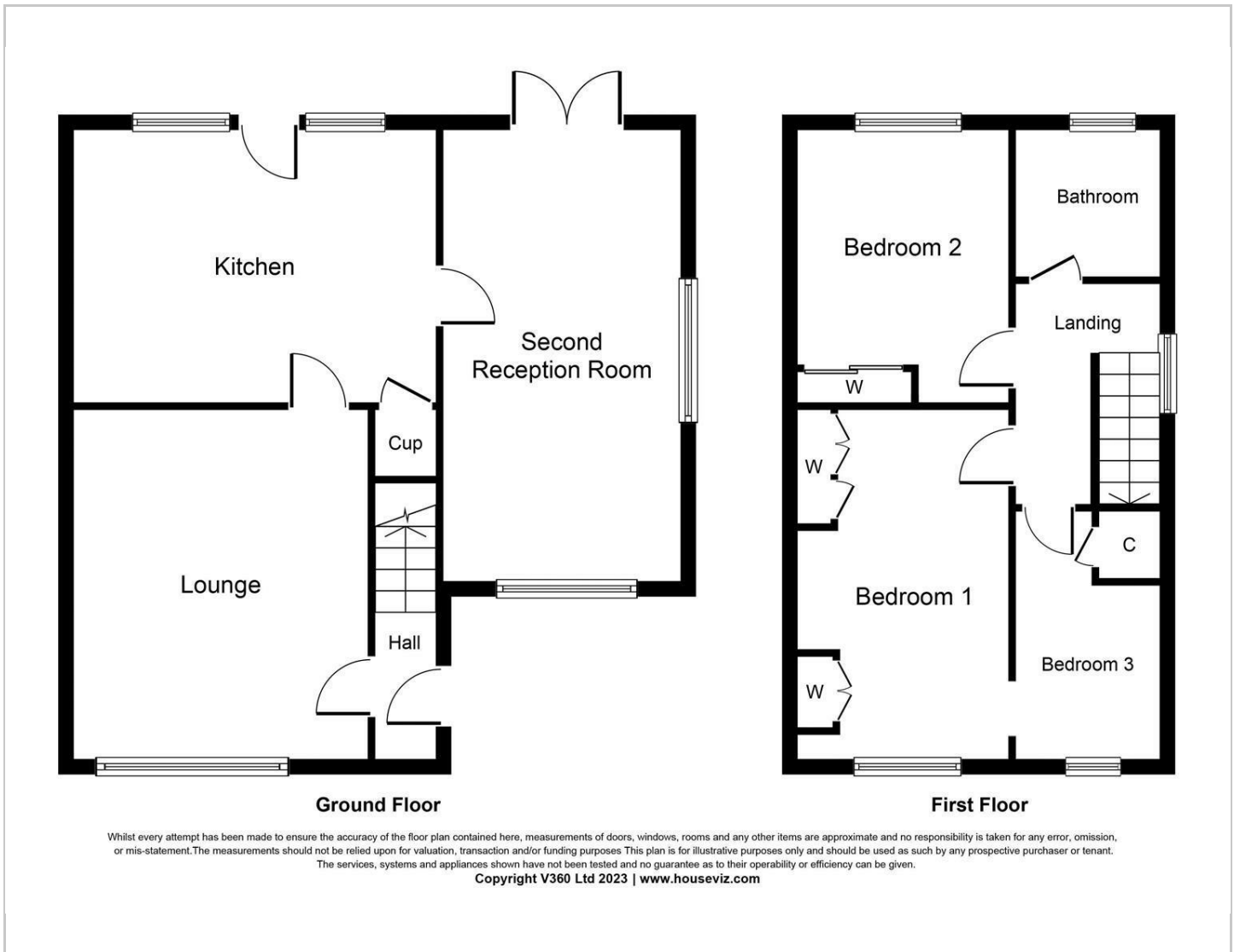
Map



EPC graph



Floor Plan



VIEWING

Please contact us on 01642 615657 if you wish to arrange a viewing or would like more information.

These particulars, whilst believed to be accurate are set out as a general outline only for guidance and do not constitute any part of an offer or contract. Intending purchasers should not rely on them as statements of representation of fact, but must satisfy themselves by inspection or otherwise as to their accuracy. No person in this firm's employment has the authority to make or give any representation or warranty in respect of the property.

17 Bishop Street, Stockton on Tees, TS18 1SY

Tel: 01642 615657 Email: stockton@gowlandwhite.co.uk <https://www.gowlandwhite.co.uk/>