



17 Barwick View , Ingleby Barwick, TS17 0TL

AVAILABLE NOW - SORRY NO PETS OR SMOKERS

A highly desirable and impressive 4 BEDROOM DETACHED property located on The Rings development and is likely to appeal to a family as this substantial property offers ample space, with neutral tones throughout providing an ideal backdrop for furniture of any colour scheme. The property occupies a superb corner spot, enjoying a pleasant front outlook, extensive enclosed rear garden, with rear DOUBLE GARAGE and DRIVE. Situated within close proximity of the A66 means that this property provides excellent transport links to Teesside and the surrounding area.

The spacious family accommodation includes a SPACIOUS LOUNGE/DINER and BRAND NEW KITCHEN. Completing the ground floor accommodation is a UTILITY ROOM and WC. There are 4 well-proportioned bedrooms, one with en suite, and a NEWLY FITTED STYLISH BATHROOM. The property is GAS CENTRALLY HEATED and has uPVC double glazing throughout. Externally, there is a establish garden and DOUBLE GARAGE.

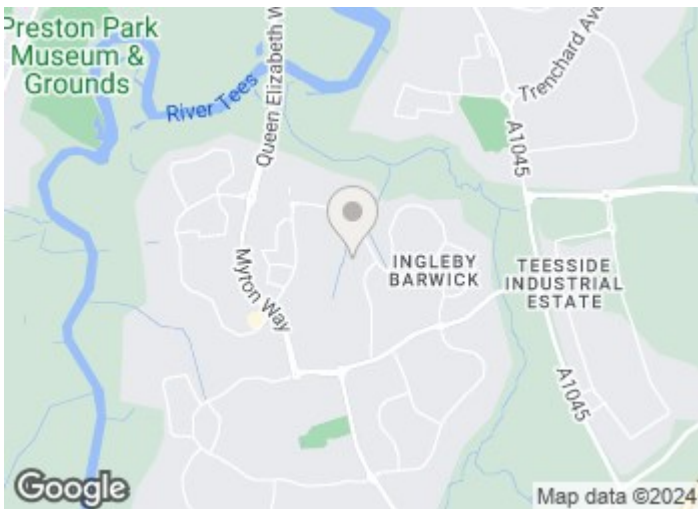
£1,500 PCM

17 Barwick View

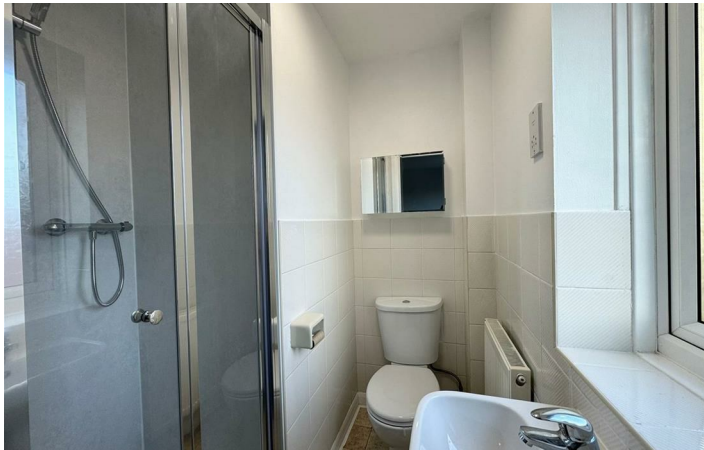
, Ingleby Barwick, TS17 0TL



- 4 BEDROOM DETACHED PROPERTY
- EXCELLENT COMMUTING OPTIONS
- NEWLY DECORATED THROUGHOUT
- FANTASTIC LOCATION
- NEWLY FITTED KITCHEN
- BRAND NEW FLOORING
- GREAT CATCHMENT AREA FOR SCHOOLS
- STYLISH REFITTED BATHROOM



Directions





Floor Plan

These particulars, whilst believed to be accurate are set out as a general outline only for guidance and do not constitute any part of an offer or contract. Intending purchasers should not rely on them as statements of representation of fact, but must satisfy themselves by inspection or otherwise as to their accuracy. No person in this firm's employment has the authority to make or give any representation or warranty in respect of the property.

101 High Street, Yarm, TS15 9BB
Tel: 01642 248248 Email: yarm@gowlandwhite.co.uk <https://www.gowlandwhite.co.uk/>

