



Limpton Gate, Yarm, TS15 9JA

This beautifully presented and substantially extended four-bedroom detached house, with a garage, is situated in a desirable locality of Yarm. Ideal for families, it offers a spacious and impressive living environment both inside and out.

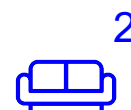
Enter via a large, bright hallway which leads to lounge featuring double doors through to the open plan kitchen/dining room. The kitchen provides a variety of modern units, granite worktops together with an undermount sink and integrated dishwasher, gas hob and oven and serviced by a utility room which provides plumbing for the washing machine and dryer. The attractive garden room, recently upgraded with new windows, roof lights and a centrally heated radiator provides offers a charming space with a delightful view of the rear garden. The property also benefits from a downstairs W/C. Upstairs, a well-lit landing with Velux roof window leads you to the master bedroom, complete with an en-suite featuring a large shower cubicle. Additionally, the property offers three more good sized bedrooms and a family bathroom equipped with a separate bath and shower cubicle.

C

Externally to the front is a double width block paved driveway, providing off road parking for multiple cars, leading to a sizeable integral garage. At the rear, you'll find an expansive lawned garden with a patio area, complemented by amenities such as a timber shed, external sockets, and an outdoor tap.

Located within the Spitalfields development in Yarm, this property offers proximity to the vibrant cobbled High Street, featuring an array of bars, cafes, shops, and restaurants. Convenient commuting is facilitated by the nearby Yarm Railway Station and easy access to major roads like the A19 and A66. Its closeness to reputable primary and secondary schools adds to its appeal as an ideal family home.

£365,000



Limpton Gate, Yarm, TS15 9JA

HALL

LOUNGE

11'2 x 16'6 (3.40m x 5.03m)

KITCHEN/DINING ROOM

21'1 x 11'3 (6.43m x 3.43m)

GARDEN ROOM

10'9 x 11'11 (3.28m x 3.63m)

UTILITY

6'2 x 7'6 (1.88m x 2.29m)

W/C

6'6 x 4'2 (1.98m x 1.27m)

LANDING

MASTER BEDROOM

11'0 x 18'11 (3.35m x 5.77m)

EN-SUITE

5'4 x 3'11 (1.63m x 1.19m)

BEDROOM TWO

10'5 x 15'8 (3.18m x 4.78m)

BEDROOM THREE

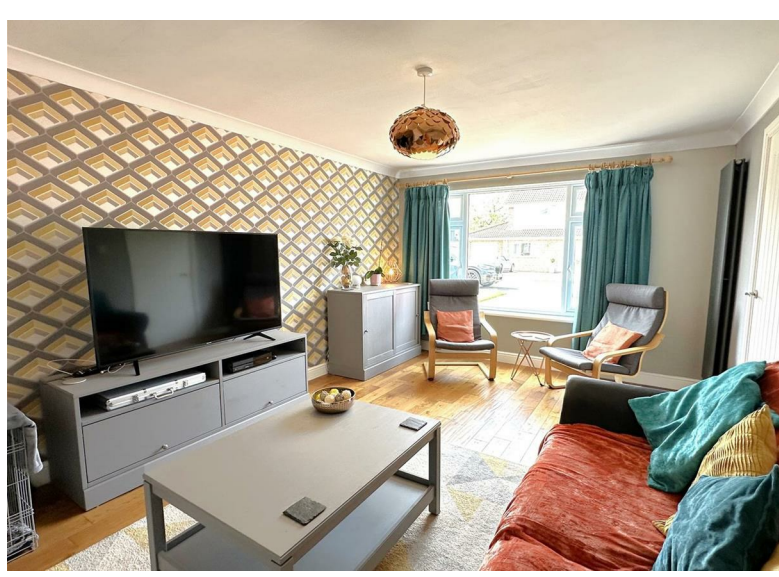
12'1 x 10'5 (3.68m x 3.18m)

BEDROOM FOUR

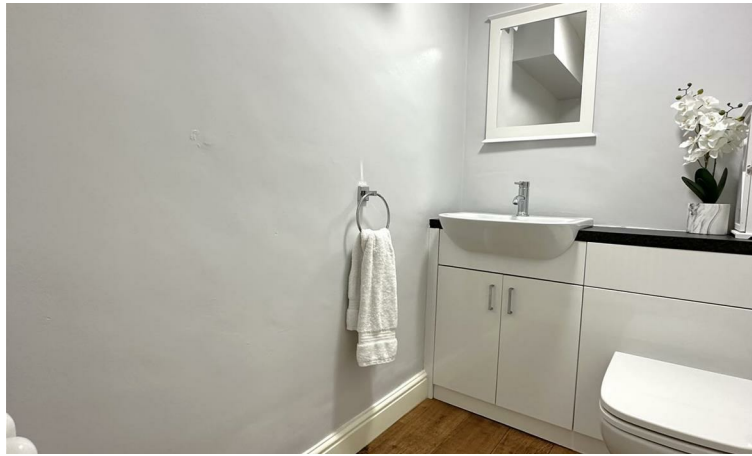
18'10 x 7'0 (5.74m x 2.13m)

BATHROOM

9'7 x 7'5 (2.92m x 2.26m)



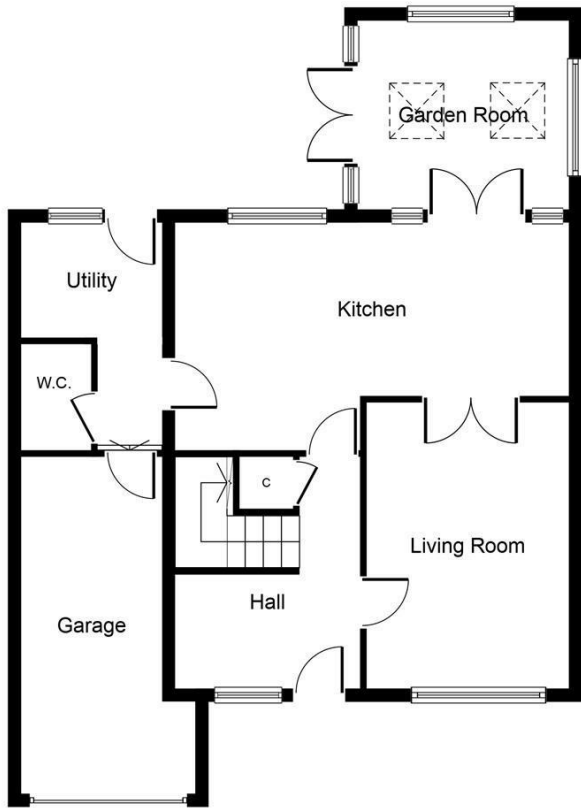
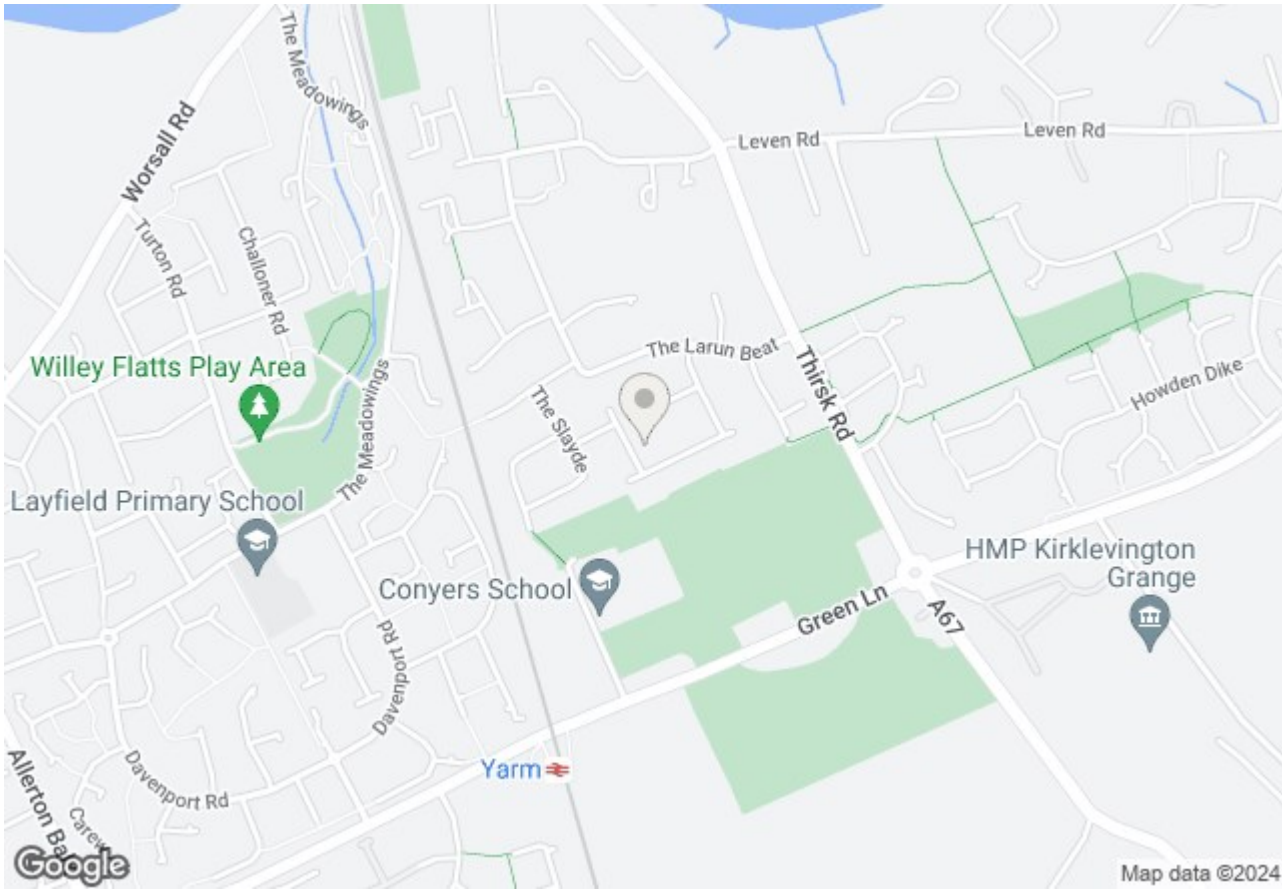
Limpton Gate, Yarm, TS15 9JA



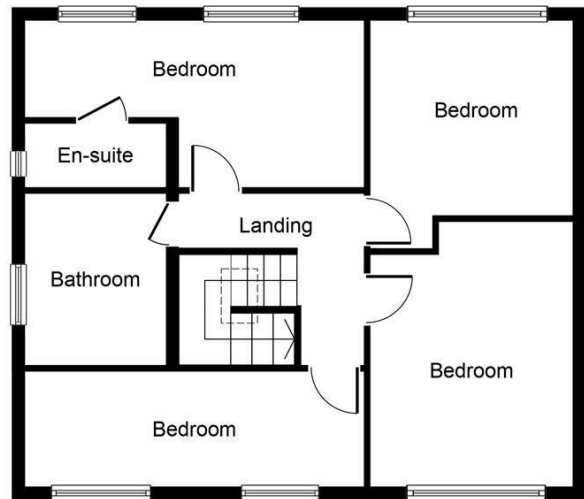
Limpton Gate, Yarm, TS15 9JA



Limpton Gate, Yarm, TS15 9JA



Ground Floor

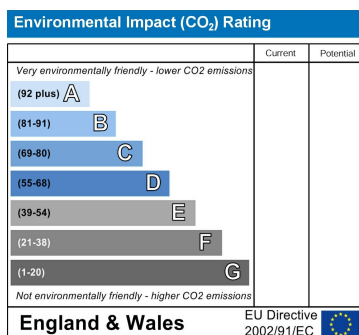
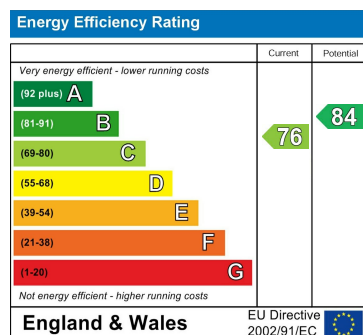


First Floor

Whilst every attempt has been made to ensure the accuracy of the floor plan contained here, measurements of doors, windows, rooms and any other items are approximate and no responsibility is taken for any error, omission, or mis-statement. The measurements should not be relied upon for valuation, transaction and/or funding purposes. This plan is for illustrative purposes only and should be used as such by any prospective purchaser or tenant. The services, systems and appliances shown have not been tested and no guarantee as to their operability or efficiency can be given.

Copyright V360 Ltd 2024 | www.houseviz.com

Limpton Gate, Yarm, TS15 9JA



VIEWING

Please contact us on 01642 248248 if you wish to arrange a viewing or would like more information.

These particulars, whilst believed to be accurate are set out as a general outline only for guidance and do not constitute any part of an offer or contract. Intending purchasers should not rely on them as statements of representation of fact, but must satisfy themselves by inspection or otherwise as to their accuracy. No person in this firm's employment has the authority to make or give any representation or warranty in respect of the property.